

Compiere Warehouse Management

Compiere Warehouse Management, a Consona ERP solution, includes comprehensive, integrated functionality that automates inbound, warehousing and outbound operations. Utilizing a first-of-its-kind customizable rules engine, it directs warehouse activities resulting in improved productivity, space utilization and customer satisfaction.

INBOUND OPERATIONS

Streamline receiving operations by quickly accepting an entire receipt to a purchase order or an entire product to multiple purchase orders. Integration with the Compiere ERP system allows accepted inventory to immediately be available to promise (ATP) to customer orders.

Compiere's sophisticated rules engine generates directed putaway tasks based on products characteristics, quantities received, stocking locations, and optimal travel sequence.

OUTBOUND OPERATIONS

Implement Wave Planning to prioritize ready-to-ship orders according to available labor and shipment deadlines. Create and refine multiple waves throughout the day by applying user-defined searches on orders to produce directed cluster or order pick lists.

Outbound operations extend to packing and shipping functions, including support for shipment consolidation. You may also define specific picking rules and wave planning criteria to prioritize shipments to your most important customers.

WAREHOUSING OPERATIONS

Compiere Warehouse Management helps you monitor and control your inventory investment. Rules-driven replenishment tasks automate the movement of goods within the warehouse, taking into account unit of



measure conversions and capacity differences between stocking and destination locations.

Dedicate the most efficient space for high and low volume items. Monitor Location visits and Zone configurations for slotting optimization.

COMPIERE EXCLUSIVE: CUSTOMIZABLE RULES ENGINE

A customizable rules engine is the "brain" that drives Compiere Warehouse Management. The rules engine optimizes warehouse tasks and productivity by evaluating receipts, inventory and orders against your rules, warehouse design, units of measure, and other parameters.

While Compiere Warehouse Management includes pre-configured rules, its power comes from the ability to quickly and easily create custom rules and strategies to match how you want to optimize warehouse operations.

Your customized rules drive warehouse tasks and improve productivity

"Compiere Warehouse Management will extend the flexibility and cost savings we have already gained from the Compiere ERP system into our warehouses across the globe."

— Michel Khan
CIO with Specsavers Optical Group

Compiere Warehouse Management Capabilities Summary

RECEIVING

- Streamlined receipts
- Document based receipt
- Product based receipt
- Blind receipt
- Receipts in actual UOM or primary UOM
- Production receipt

DIRECTED PUTAWAY

- Best location selection based on user-defined rules
- Putaway task list sorted by travel sequence
- Pre-defined directed putaway rules
 - Fixed location in warehouse
 - Fixed location in zone
 - Floating location in warehouse – same product
 - Floating location in zone – same product
 - Empty floating location in warehouse
 - Empty floating location in zone
 - Custom rules
- Product splitting
- Location capacity constraints
- Exception handling

RETURNS

- Receive and process RMAs
- Process returns to vendors

INVENTORY CONTROL

- Stock in one UOM but pick in another UOM
- Monitor quantities: on hand, allocated, available and days cover
- Inventory valuation

REPLENISHMENT

- Min-Max replenishment by zone

- Replenishment task list sorted by travel sequence
- Location capacity constraints

SLOTING

- Optimize space based on
 - Location visits
 - Product velocity
 - Zone configurations
- Move tasks

WAVE PLANNING

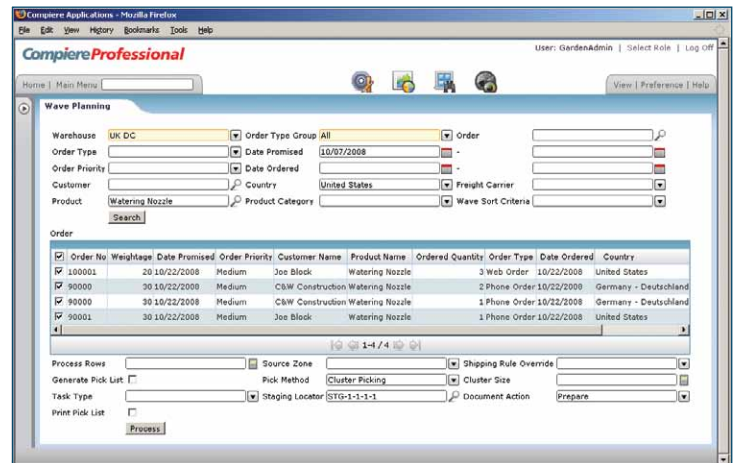
- Rules-based building of waves
- Simulation of fulfillment success by various criteria
 - Customer
 - Order number/type
 - Date ordered/promised
 - Shipment destination
 - Product/category
- Specific order line selection
- Release waves by orders or order lines
- Prioritize release
- Flexible sort criteria
- Override shipping rules
- Disallow negative inventory

DIRECTED PICKING

- Picking methods
 - Single Order pick
 - Multi-order (cluster) pick
- Pick list sorted by travel sequence
- Predefined directed picking rules
 - Pick to efficiency for warehouse
 - Pick to efficiency for zone
 - Pick to clean for warehouse
 - Pick to clean for zone
 - Custom rules
- Special order handling
- Monitor order fulfillment
- Exception handling

PACK AND SHIP

- Order shipment confirmation
- Shipment document generation



Prioritize order fulfillment with Wave Planning

- Shipping label generation
- Consolidation of shipments

TASK MANAGEMENT

- Centralized monitoring of all active tasks
- Task exceptions management for discrepancies
- Completed task confirmation

MANAGEMENT REPORTS

- Location Visits
- Worker Performance
- Warehouse Stock Information
- Order Monitoring
- User defined by Business View Layer

WAREHOUSE PLANNING

- Warehouses
 - Multiple warehouses per organization
 - Source warehouse assignment
 - Default receiving location
 - Default staging location
- Zones
 - Multiple zones per warehouse
 - Define rules for Available to Promise and Available to Allocate
 - Zone-to-zone replenishment
 - Putaway and picking sequences

- Locations
 - Identify by aisle, bay, row position, bin
 - Reservation and allocation control
 - Putaway and picking sequences
- Products
 - Product cross-references across Name, Search key, UPC, SKU, Vendor product number and Customer product number
 - Barcode scanning using any product cross-reference
 - Product dedicated to Location

ERP INTEGRATION

- Purchasing
 - Automatic generation of replenishment purchase requisitions
 - Two- and three-way matching of receipts with accounting documentation
- Order Management
 - Real-time available-to-promise
 - Special order fulfillment
- Materials Management
 - Product costing
 - Physical inventory
 - Inventory adjustments