



Compiere 3.6.1 Release Notes

May 31, 2010

Table of Contents

Compiere 3.6.1 Release Notes

Compiere 3.6.1 Release Summary	3
Audience	3
Prerequisites	3
Software Management	3
Previous Installations	3
Recommended Infrastructure	3
Process to Log Support Requests	3
Update/Migration Procedure	3
Install Procedure	3
Application Extensions	3
Command Line Scripts	3
New In Compiere 3.6.1	4
Cycle Counting	4
Changes to M_Storage – Performance Improvement	4
Bulk Updates – Performance Improvement (available since 3.6)	5
Sequence Cache – Performance Improvement (available since 3.6)	5
Technical Notes	5
Web User Interface – Compiere Professional Edition	6
Product Enhancements for Compiere 3.6.1	6
Fixed Issues for Compiere 3.6.1	7
Known Issues in the Migration Process	9
Known Issues in the Install Process	9
Known Issues in Compiere 3.6.1	11
Appendix A	12
Compiere 3.6.1 Migration Instructions	13
Prerequisites	13
Preserving Customizations	13
Migration Steps	13
Preparation	14
Test Mode (optional)	14
Migrate to a New Release	14
Multi-Server Installation – Compiere Enterprise Edition	24
Post Migration Steps for RMA/RTV	25
Appendix B	26
Compiere 3.6.1 Installation Instructions	27
Prerequisites	27
Database Installation	27
Java Installation	27
Download Compiere	27
Run Application Server	35
Start Compiere	36
Appendix C	37
Compiere 3.6.1 Application Extensions - Compiere Partners	38
Registration of Application Extensions – Application Provider (Partner)	38
Creation of Application .car file – Application Provider (Partner)	40
Installation – Application Consumer (Customer)	42
Appendix D	43
Command Line Scripts	44

Compiere 3.6.1 Release Summary

Compiere 3.6.1 introduces the new cycle counting inventory functionality and a rearchitecture of the M_Storage table to eliminate contentions by many critical business flows. Compiere 3.6.1 also includes 7 customer/partner enhancement requests and more than 50 customer/partner bug fixes.

All bug fixes and new functionality from 3.6 are already part of this service pack, including the new Manufacturing and Warehouse Management integration, Visual Editor Enhancements, a new print format editor based on a flash interface and significant performance improvements. For more details on the changes made in previous releases please see the release notes from <http://wiki.compiere.com/display/docs/Compiere+Release+Notes>

Certain features in Compiere require a Compiere Professional or Enterprise Edition subscription. Contact a Compiere Authorized Partner or Compiere Sales (<http://www.compiere.com/company/contact-us.php>) to acquire Compiere subscription.

Compiere may include certain prototype features and beta functionality as indicated in their respective user interfaces with a beta checkbox. These are not recommended for production. They are intended only for evaluation as beta functionality.

Audience

This guide is designed for Compiere Business Partners and Customers. It provides essential information for current Compiere administrators planning to install or migrate (upgrade) to Compiere 3.6.1.

Prerequisites

- Working knowledge of Compiere ERP and CRM
- Compiere Web Store Access
- Sun Java JDK 1.6.0 Update 5 or Later
- Database Oracle XE, Oracle 10gR2, Oracle 11g, or EnterpriseDB Postgres Plus Advanced Server 8.3

Software Management

Previous Installations

You can download the Compiere 3.6.1 from <http://www.compiere.com/wstore>. The migration tool will bring you up directly to Compiere 3.6 plus all the cumulative fixes included in the service packs without having to migrate to an intermediate release.

Recommended Infrastructure

- Sun Java JDK 6 Update 5 or Later (not just JRE)
- also known as Sun Java SDK.
- Database Oracle XE, Oracle 10gR2, Oracle 11g, or EnterpriseDB Postgres Plus Advanced Server 8.3.
Tip: It is Mandatory to use a Unicode character set.
- Database approved Linux Operating System, Windows 2003 or Windows XP
- TCP/IP connection and Internet access
- Disk Space: > 5 GB (includes database)
- Swap Space: > 1GB
- Memory: > 1 GB
- Firefox Browser 3.5 is recommended for Web User Interface.

Process to Log Support Requests

To ensure timely service for any issues, please use the Compiere's Case Management system. For details please review the [Support Requests](#) page on our website.

Update/Migration Procedure

See [Appendix A](#)

Install Procedure

See [Appendix B](#)

Application Extensions

See [Appendix C](#)

Command Line Scripts

See [Appendix D](#)

New In Compiere 3.6.1

The following is a detailed description of the enhancements made available in Compiere 3.6.1.

Cycle Counting

Cycle counting provides you with the option of carrying out systematic physical inventory counting of products in your locator. Using the Analysis group you can define the rules and frequency with which the products needs to counted in a warehouse. You can assign products to these analysis groups and run the generate Cycle count process to generate Inventory cycle count documents which the warehouse operator can use to count products. Optionally, user can lock down the locator for material transactions while the actual counting is in progress for the locator. User can define their custom rules to sort products within each rank in the analysis group using the ABC rank sort criteria window.

When migrating from earlier release, the seeded ABC rank sort criteria are not populated by default. So user will have to define them in the system once. There are three seeded rules:

- Least Onhand Quantity
 - o Name:- Least Onhand Quantity
 - o class Name:- org.compiere.model.LeastOnHand
 - o Based on Price List :- false

- Earliest Ship Date
 - o Name:- Earliest Ship Date
 - o class Name:- org.compiere.model.EarlyShipDate
 - o Based on Price List :- false

- Highest Price
 - o Name:- Highest Price
 - o class Name:- org.compiere.model.HighestPriceList
 - o Based on Price List :- True

Changes to M_Storage – Performance Improvement

In this release, Compiere has introduced a new table M_StorageDetail that replaces existing table M_Storage as the container for information about product quantity.

This change was made to eliminate unnecessary contentions on M_Storage by the many critical business flows (e.g. the processing of a Purchase Order with 10,000 lines previously would hold up other short running programs such the processing of many sales orders of 10 lines each) and thereby increase the concurrency between the said flows.

As a part of this change, Compiere will migrate existing quantity information from M_Storage to M_StorageDetail. This migration is implemented as a migration step that will be automatically launched when an instance is migrated from a version earlier than 3.6.1 to version 3.6.1+. To ensure the correct migration of data, Compiere will only initiate the migration if the M_StorageDetail table is empty prior to migration.

In addition to the migration that Compiere has performed, users will need to perform additional tasks if one or more of the following situations are applicable:

Situation	Recommended Changes
Custom code and application dictionary entries that refer to the now obsoleted MStorage class	Refer to the new MStorageDetail and Storage classes
Custom code and application dictionary entries that refer to the now obsoleted M_Storage table	Refer to the new M_StorageDetail table. Alternatively, users can also refer to the new M_Storage_V view. Do note that references to the M_Storage_V view will in general perform worse than direct references to M_StorageDetail table
Custom columns have been added to M_Storage	Evaluate if they should be created on M_StorageDetail and/or M_Storage_V

Bulk Updates – Performance Improvement (available since 3.6)

Bulk Updates improves the overall system throughput by reducing the database record-locking contention on key tables such as M_Storage. The amount of time a record is locked for update is directly dependent on the amount of time it takes for the entire transaction to either commit or rollback. With the application of the new “bulk update” architecture, the elapsed time of each transaction should be substantially reduced, leading to significant improvements in the overall system throughput.

Bulk updates have been enabled for the following processes: Orders, Invoices, Warehouse Tasks, Shipments and receipts processing.

New for 3.6.1: Bulk updates have also been enabled for the import processes for business partners, products, orders, invoices and locators.

Sequence Cache – Performance Improvement (available since 3.6)

A new “Gapless” flag has been added for the ID and document sequences. When the flag is checked, sequences continue working in the same way as in previous releases where the sequence row is locked until the transaction is committed, allowing it to keep the sequence numbers without gaps even if the process fails. This fulfills a legal requirement in some countries where document numbers must be consecutive and auditable, but it generates contention issues when multiple users try to create the same type of documents. As an alternative for customers that can allow to have gaps in their document numbers you can deselect the “Gapless” flag to allow a more efficient and without contention management of the sequence numbers, similar to the database dependent sequences.

By default for new instances all the document sequences continue being gapless, and internal ID sequences (usually for columns with the name <Table>_ID) won't be gapless to improve performance.

For existing instances migrating to 3.6, all existing tenant sequences will have the gapless flag unchecked, with better performance, but with the possibility of losing sequence numbers in case of process or environment failures.

IMPORTANT: Please review the accounting and legal requirements in your country. If it is mandatory to have gapless document numbers please be sure to check the gapless flag for your document sequences. If it is not mandatory and your business allows the possibility of having gaps in the document numbers, we recommend that you uncheck the flag for all sequences. Notice that most tables have two sequences: one called <Table> for the internal IDs, and another DocumentNo_<Table> for the document numbers.

Technical Notes

- The following standard parameters need to be modified for any webservice request:
 1. "Organization" changed to "#Organization" (URL encoded as "%23Organization")
 2. "Tenant" changed to "#Tenant" (URL encoded as "%23Tenant")
 3. "Role" changed to "#Role" (URL encoded as "%23Role")
 4. "Warehouse" changed to "#Warehouse" (URL encoded as "%23Warehouse")

This change is necessary as while performing GET on Views, it is necessary to distinguish the context parameters from query parameters. E.g. If user passes the parameter "Organization" instead of "#Organization", it will be treated as a filter parameter for a view that returns data from multiple organizations.

- Internet Explorer 8 is now a certified browser for the Compiere web UI
- Important Notes from previous releases:
 - Web UI is now based on [Google Web Toolkit \(GWT\) 2.0.1](#)
 - Compiere does not support Business View Layer Component on EnterpriseDB (Postgres Plus AS) due to some technical constraints to enforce the Compiere security model. You can get Jasper Reports to work in EnterpriseDB by setting up the Jasper reports directly against the Compiere schema, but the report developer will need to manually apply the security rules. The following reports can be used as an example to setup Jasper Reports in EDB: Trial Balance, Profit and Loss Statement, and Balance Sheet.
 - The Payflow Pro integration provided by Compiere to process payments has been updated to use the new Payflow Pro SDK and updates to the payment processor data from the bank window are

required. If you continue to use outdated SDKs after January 2010 your payment processing will stop.

Web User Interface

Compiere Professional Edition

In order to get properly acquainted with the Web User Interface, please read the section on “Using the Web Application” in the user documentation.

At present, there are still some known features available in the “Java Swing” User Interface that are not yet available in Web User Interface. Most of these features are scheduled for a future release.

The following features are currently **Not Available** in the Web User Interface. However, they are fully functional in the “Java Swing” User Interface:

- Resource & Schedule Info Windows – Info Window available from the ‘View’ menu to view Scheduled Resources.
- Resource Assignment – A Form used to schedule a resource accessed from the Assigned Resource field in a Sales Order, Project, or Expense Report.
- Personal lock – A security feature accessible from the toolbar used to lock a specific record to keep the record private. It is also used as a method to set security access rules for specific records.
- Archive Viewer – A window used to view the Archived Records. Records or Documents can be archived via the toolbar from the document viewer or automatically via a setting available in the tenant window.
- Ability to print mass shipments – A process available from the Main Menu used to print multiple shipments.
- Print from info windows – A button accessible from any Info window used to print a screen shot of the information.
- Ability to email documents/reports as attachment – A button available from the toolbar of any report or document that opens an e-mail dialog box with the report attached as a .pdf file allowing users to send the report via e-mail.
- Product attribute grid – A form available from the Main Menu which allows users to select an Attribute and view a grid of which products are available with the selected attributes.

Important: The Firefox Browser 3.0/3.5 is recommended when using Compiere with the web user interface.

When using Internet Explorer, verify the options: “Always switch to new tabs when they are created” and “A new tab in the current window” are enabled: Under Tools> Internet Options> General Tab, open the Tab settings.

Product Enhancements for Compiere 3.6.1

The following is a list of the enhancement requests that have been completed in Compiere 3.6.1.

Document No	Summary
10018488	Workflow activity forwarding, On the "Workflow Activities" tab in the main window users can see the complete history of events for an activity that is assigned to them. It would be helpful to be able to see the name of the user that performed the action, for every event in the history. This is especially usefull when activities are being forwarded to a specific user. (i.e. you can see who assigned it to you)
10022000	DocStatus in RV_UnPosted view. Is it possible to add DocStatus to the RV_Unposted view and the screen UnPosted Documents? It's helpful for all users to see the docstatus in the unposted screen. In case of a drafted document, the user doesn't have to zoom to the document to see that the document can't be posted because it's not completed yet.
10022802	In WMS enabled warehouses, after voiding sales order system does void respective shipment but doesn't void respective pick tasks.
10022927	Bulk update for import orders e.g. Order import

10022808	Add currency field to allocation tab in Invoice and Payment windows. This will make it easier to figure out the currency of the allocation amount.
10022925	Web services now support view based queries.
10021242	Customization checkbox added to the record info dialog in the web UI for system records and system login.

Fixed Issues for Compiere 3.6.1

Document No	Summary
10016400	Cash Journal and Invalid Allocation
10016563	Foreign Currency Payment Allocation / Exchange Gain error. Fix is to ensure that the reciprocal rates are defined
10016655	Production Posting Problem W MultiLevel BOM
10020040	Double UPPER in QueryRestriction & Info. I noticed a problem with indexation and the Search engine of Compiere.
10020709	AD_Tab.ReadOnlyLogic not working. When a tab is should be readonly due to its ReadOnlyLogic the save & new record buttons are deactivated, but the fields are not displayed as readonly.
10021490	Password change dialog shows password in plain text.
10021586	printviewer still has the "Script" menu entry.
10021837	There is a bug/error in compiere projects window, if the project type is a phase.
10021851	#Web UI - error when selecting a standard response on the Lead window.
10021862	RV_UnPosted, restriction on DocStatus 'VO'. Can this be reviewed for all view components of RV_UnPosted with status restrictions?
10021995	Table reference, identifiers & translation. I noticed that when you translate C_DocType, the invoice window show the translated name in the "Document Type" field, but the "Target Doc Type" fields always display the name from the C_DocType record instead of the corresponding _Trl version.
10022047	Saving workflow overrides node names & descriptions.
10022184	Cannot choose the conversion type on the cash journal line. The second problem is that the source amount in EUR of the petty cash is accounted in CHF instead of EUR.
10022202	In the swing ui when doing a search: when clicking on the cancel button (X), it requery the records and display all the records instead of doing nothing.
10022289	Inconsistent processing when voiding a sales orders and a purchase order. Unable to void a PO that has a Material Receipt matched. But able to void a sales order with shipment, which then voids the shipment.
10022316	In a financial report, if a column is the sum of other columns, and a line is a ratio of two other lines, then the cell that correspond to that line and that column is not calculated properly. This is because the lines calculations are performed before the column calculations in finreport.doCalculations(). The cell is then calculated as the sum of the ratios of the other columns, instead of the ratio of the two other lines in that column..
10022323	I specified a Purchasing UOM on the Product/Purchasing tab. I expected this UOM to be used when I create a Purchase Order for this product.
10022384	When there are no receivables, the Profit and Loss Statement report is not showing any data. When it is run in Garden World they are displaying a completely empty PDF.
10022440	In ProcessCtl.run(), in the isReport Section, m_pi.setSummary("Report", re != null); creates an error message at the end of the reports. if re!=null, everything is fine. So probably should be something like this: m_pi.setSummary("Report", re == null);
10022478	The open balance of the Business Partner is not correctly calculated for customers invoiced in other currencies than the currency of reference.
10022587	Deactivating Business Partner causes save issue on order.
10022598	When I create a Purchase Invoice in foreign currency, and I pay that with different currency rate, then the Business Partner - Open Balance Amount is giving a WRONG balance.
10022750	We try a migration having first emptied the table (C_ORDER_LINES). The migration will not stop (the presence of error messages) but the end result is not usable. It is still impossible to log into the migrated COMPIERE v3.5

10022760	I created one window "Employee Master" using table "C_BPartner ". i want to show the record row in Gray Color when the record is NOT ACTIVE. In swing UI it's showing gray color for InActive Records but in WEB UI it is not showing the gray color.
10022790	Please help us find where to translate the attached message
10022803	Our customer is creating Sales Orders and indicating Shipping Rule = Force, on the sales order line #1 has qty on-hand to fulfill the order, however line #2 has zero on-hand. It is expected that the 'Force' rule will generate a shipment including both line #1 and #2. Generate Shipments (manual) does not appear to be doing this. It is generate a shipment for the sales order lines one-at-a-time. This creates confusion and requires running Generate Shipments (manual) more than once for each sales order.
10022812	The automatic selection of the Tax on Vendor invoice lines does not work for Vendor tax exempted.
10022820	Translation Records for M_Attribute tables. There are no translation tables for the following tables: M_Attribute, M_AttributeSet, M_AttributeValue
10022822	product search info window generates results that are not restricted to warehouses from current org :
10022825	Quantity Reserved is going into negative and also not updating properly.
10022829	Unable to get payments to Print from Compiere.
10022848	Fix Validate Business Partner process.
10022850	When creating an order through web services, the PaymentRule and DeliveryRule default to Availability and On Credit respectively if the C_BPartner_Location_ID element is missing.
10022897	I can visit Web UI, but cannot run Swing UI with the following erros, using web Start.
10022912	If an Invoice is Voided or Reversed it continues to show up as an Open Invoice in the Open Invoices report.
10022926	Role does not have "read write" access on a custom BP window.
10022948	Generate Purchase Price Variance accounting entries only if Costing Method is Standard Costing.
10022976	Customer is trying to export Accounting Facts from Accounting Facts Window using the 'Export All Records' - the resulting Excel file or CSV file is returned after a long wait with 0 records.
10022983	Go to menu Audit Process. Then go on the second tab, throws errors.
10023036	Bug corrupting datas. When browsing and updating records, some fields are updated with values of sub-tabs.
10023060	Synchronize Terminology doesn't synchronize the field 'Translated' of a field on a Tab in the following situation:
10023083	I want to add some columns and logic to Payment (MPayment) and Allocation Header (MAllocationHdr). But the problem is, I could not extend these two class because both of them are final.
10022934	PO Price Variance using incorrect cost to calculate DR and CR entries associated with PO Match record. This is causing major accounting problems.
10022922	Performance problem with C_Order table lookups
10022920	Performance problem with C_WaveLine lookups
10022894	AD_Issue messages : Summary: Outside of Area(0): Point2D.Double[36.0, 297.5078125] Source: org.compiere.print.layout.LayoutEngine.newLine

Known Issues in the Migration Process

Warnings and Error Messages you may see during the Migration steps.

Migration Issues – Warning/Error Messages	Database	Comments
ORA-00001: unique constraint... violated	All	This might indicate referential issues in your pre-migration data. Review the problem data.
ORA-01408: such column list already indexed	All	This is an acceptable warning message.
ORA-01440: column to be modified must be empty to decrease precision or scale	All	This is an acceptable warning message.
ORA-02296: cannot enable	All	This might indicate referential issues in your pre-migration data. Review the problem data...
ORA-02275: such a referential constraint already exists in the table	All	This might indicate referential issues in your pre-migration data. Review the problem data. This is an acceptable warning when upgrading CBIZ and getting errors for the tables AD_Dashboard*
ALTER TABLE S_ResourceType MODIFY ChargeableQty NUMBER(10) DEFAULT NULL Failed sql statements ERROR: cannot alter type of a column used by a view or rule Detail: rule _RETURN on view rv_asset_delivery depends on column "lot" - ALTER TABLE A_Asset_Delivery ALTER Lot TYPE VARCHAR(255) , ALTER Lot SET DEFAULT NULL No Key & No Parent - Table AD_RecentItem	EnterpriseDB	This is an acceptable warning message.
While executing RUN_Setup, refreshing an existing instance =====> DB_PostgreSQL.getDataSource: DB_EnterpriseDB[null] [12] java.lang.IllegalArgumentException: DataSource with name 'CompiereDS' already exists!	EnterpriseDB	This is an acceptable warning message
While executing RUN_Setup -----> ModelValidationEngine.addClasses: GardenWorld: compiere.model.MyValidator - java.lang.ClassNotFoundException: compiere.model.MyValidator [12] -----> ModelValidationEngine.addClasses: Extended Units of Measure: org.compiere.xuom.XUOMModelValidator - java.lang.ClassNotFoundException: org.compiere.xuom.XUOMModelValidator [12]	All	This is an acceptable warning message
ORA-01452: cannot CREATE UNIQUE INDEX; duplicate keys found - CREATE UNIQUE INDEX AD_PrintformatItem_Unique ON AD_PrintformatItem (AD_Printformat_ID,Name)	All	Migration of additional components (.car) with print format items won't work as expected.

Known Issues in the Install Process

Warnings and Error Messages you may see during the Import steps.

Install Issues – Warning/Error Messages	Database	Comments
-----> g.a: DROP SEQUENCE T_Spool_Seq -----> g.a: ORA-02289: sequence does not exist	All	This is an acceptable warning message.
-----> DB_PostgreSQL.convertStatement: Convert error! Converted statement Number=2 (CREATE OR REPLACE VIEW ...	EnterpriseDB	This is an acceptable warning message.
-----> DB.saveError: DBExecuteError - ORA-00001: unique constraint	All	These are acceptable

Install Issues – Warning/Error Messages	Database	Comments
<p>(COMPIERE.C_REGION_NAME) violated [15]</p> <p>-----> MRegion.saveNewInsertSQL: Not inserted - C_Region [15]</p> <p>-----> ProgressPanel.publish: Unable to import Region, requires UNICODE database [15]</p> <p>=====> DB.executeUpdate: INSERT INTO C_Region (AD_Client_ID,AD_Org_ID,C_Country_ID,C_Region_ID,Created,CreatedBy,Description,IsActive,IsDefault,Name,Updated,UpdatedBy) VALUES (0,0,216,438,TO_DATE('2006-02-23 15:43:34','YYYY-MM-DD HH24:MI:SS'),0,'???(Miyasaki)','Y','N','???',TO_DATE('2006-02-23 15:43:34','YYYY-MM-DD HH24:MI:SS'),0) [null] [15]</p> <p>java.sql.SQLException: ORA-00001: unique constraint (COMPIERE263.C_REGION_NAME) violated; State=23000; ErrorCode=1 at oracle.jdbc.driver.DatabaseError.throwSQLException(DatabaseError.java:125) at oracle.jdbc.driver.T4CTTloer.processError(T4CTTloer.java:305) at oracle.jdbc.driver.T4CTTloer.processError(T4CTTloer.java:272)</p>		<p>if your database is not set for Unicode (UTF8).</p>
<p>At the very end of the install process or when manually executing utils/RUN_Support 13:07:55.094 Compiere.startup: Client lap-fr/10.104.139.177: C:\Compiere2 - Java HotSpot(TM) Client VM 1.5.0_11-b03 - Windows XP 5 .1 Service Pack 2 [15]</p> <p>Exception in thread "AWT-EventQueue-0" java.lang.NullPointerException at javax.swing.plaf.basic.BasicScrollBarUI.layoutHScrollbar(BasicScrollBarUI.java:676)</p>	All	<p>No effect on the functionality. You may ignore this error.</p>
<p>Error after clicking Save on the RUN_Setup window</p> <p>=====> CConnection.createConnection: jdbc:oracle:thin:@//lap-fr:1521/xe, (1) AutoCommit=true,TrxIso=READ_COMMITTED - ORA-01017: invalid username/password; logon denied [12]</p> <p>-----> CPreparedStatement.<init>: ALTER TABLE AD_System MODIFY Summary NVARCHAR2(2000) [12]</p> <p>java.lang.UnsupportedOperationException: No DBConnection at org.compiere.util.DB.getConnectionRW(DB.java:228)</p>	All	<p>No effect on the functionality. You may ignore this error</p>
<p>Error installing the sample application extension XUOM</p> <p>Failed sql statements: ORA-00955: name is already used by an existing object - CREATE INDEX M_Product_ProductCategory ON M_Product (M_Product_Category_ID) - java.sql.SQLException: ORA-00955: name is already used by an existing object</p>	All	<p>This is an acceptable warning message</p>
<p>Error installing the sample application extension XUOM</p> <p>Create Views *****</p> <p>Starting to create views for entity: XUOM Created view #1 for entity: XUOM</p> <p>Failed sql statements <<ERROR: ERROR: relation "m_product_expensetype" already exists - CREATE UNIQUE INDEX M_Product_ExpenseType ON M_Product (S_ExpenseType_ID) - java.sql.SQLException: ERROR: relation "m_product_expensetype" already exists>></p> <p>... same error for other indexes...</p> <p><<ERROR: ERROR: constraint "fk208_10919" for relation "m_product" already exists - ALTER TABLE M_Product ADD CONSTRAINT FK208_10919 FOREIGN KEY (C_SubscriptionType_ID) REFERENCES C_SubscriptionType (C_SubscriptionType_ID) - java.sql.SQLException: ERROR: constraint "fk208_10919" for relation "m_product" already exists>></p> <p>...same error for other constraints...</p>	All	<p>This is an acceptable warning message</p>

Known Issues in Compiere 3.6.1

Issues you may encounter using Compiere 3.6.1

Issue	Database	Solution
Null pointer exception when creating CAR file in Web UI		Use Swing.
Web UI: Description is not available in workflow editor. Process requisition workflow. You should be able to see the description (ex: {10: Total Lines >100})		
Web UI: When any of the Workflow Review (i.e. Initial Tenant Setup Review) windows are displayed and then the menu tree is expanded over the workflow review, the icons for the steps in the workflow overwrite the menu options.		
Web UI: There is no button Panel at the bottom of the page for workflow Navigation in workflow editor window.		
Error when executing BVL reports on EnterpriseDB JasperReportServer.startReport: BVL Schema does not exist	EnterpriseDB	BVL is currently not supported on EDB
Firefox only. Error message when uploading an attachment to a window: An error occurred while uploading the attachment. Please reload the record and try again The attachment as such works but only gives an error. In order to see the attachment to a record, reopen the window.		

For a current list of open issues please query the list of public requests from our request system <http://www.compiere.com/support/support-requests.php>.

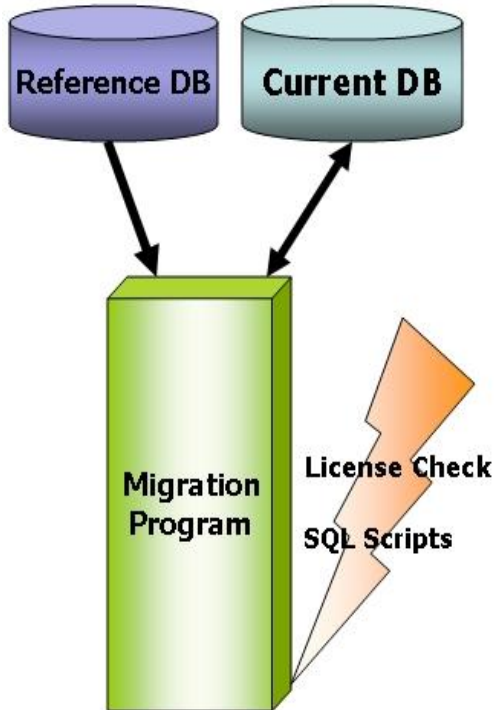
Appendix A

Compiere 3.6.1 – Migration Instructions

Compiere 3.6.1 Migration Instructions

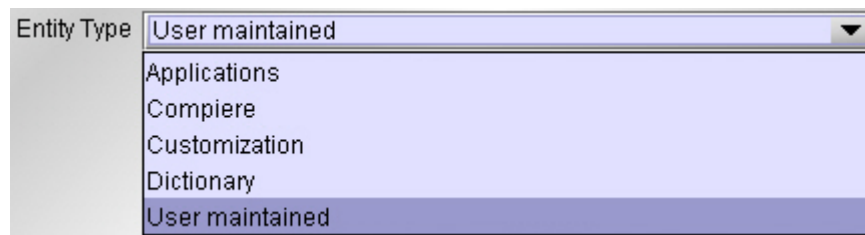
Prerequisites

- A valid Support contract
- Sun Java JDK 6 (SDK) – Update 5 or later (not just JRE)
- Database Oracle XE, Oracle 10gR2, Oracle 11g or EnterpriseDB Postgres Plus Advanced Server 8.3.



Preserving Customizations

Compiere will not modify any customizations - as long as the customizations are marked appropriately! By default, all added records in the dictionary will have the entity type "User Maintained":



- In the Change Audit window, mark the changes as Customizations before running the migration.
Tip: Alternatively, changes may be applied manually.
- Before performing the migration, run it in the test mode to ensure all customizations will be preserved.

Migration Steps

Migration Consists of the Following steps:

- Preparation
- Test Mode
- Migrate to a New Release
- Post Migration Steps

Preparation

Use the following steps to prepare for the Migration:

- Server needs to have access to the Internet.
- Stop the application server by executing `utils/RUN_Server2Stop`
- Backup the database
- If you are running EnterpriseDB 8.2 or older you must upgrade to EnterpriseDB Postgres Plus Advanced Server 8.3
- Rename `COMPIERE_HOME/jboss` directory
- Delete `COMPIERE_HOME/data/compiere_'CPRO'.car` and `compiere_'XUOM'.car` files (filename including *single quotes* from older versions)

Test Mode (optional)

First, run the Migration Program in Test mode. This allows the ability to evaluate the actions taken when running it against the database. Please note that the first step (resolve ID conflicts) will not show the correct future IDs in test mode.

If the program marks certain wanted tables for deletion, then create the table in the data dictionary (Window Table/Column) with the Entity Type *User* or *Application*.

If the program marks certain wanted columns for deletion, make sure that the column has the Entity Type *User* or *Application*. If the wanted column has the Entity Type Data Dictionary or Compiere and it is marked for deletion, then copy it under another name and mark the new column as *Custom* or *Application*.

The same applies to windows, tabs, fields, etc.

Mandatory User or Application Columns must have a default value defined in the database, e.g. `ALTER TABLE someTable MODIFY (myColumn DEFAULT 'myDefault')`, otherwise adding new records will result in an error.

Check List:

- Server has HTTP (port 80) access to the Internet
- Compiere web store Asset - Support Contract

System Operation Steps:

- Resolve ID Conflicts from Customizations/Extensions
- Synchronize Data Structure (Table/Column/Index/Constraints/..)
- Synchronize Data Content

Migrate to a New Release

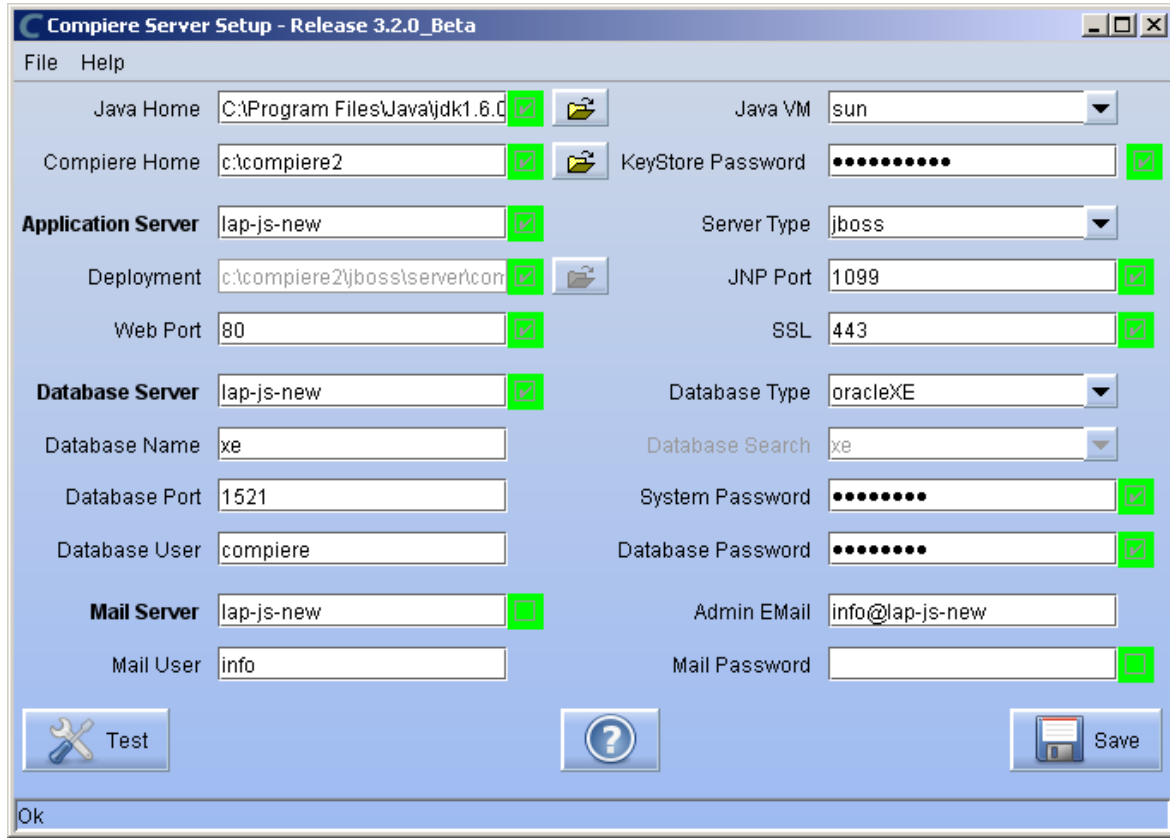
Use the following steps on the Application Server box for migrating to the new release:

- 1) When upgrading from 3.2.1 or older delete or rename the existing jboss subdirectory (due to different JBoss version and configuration files.) Download and unzip/untar the distribution file, (e.g. `Compiere_3XX.X.zip`.)

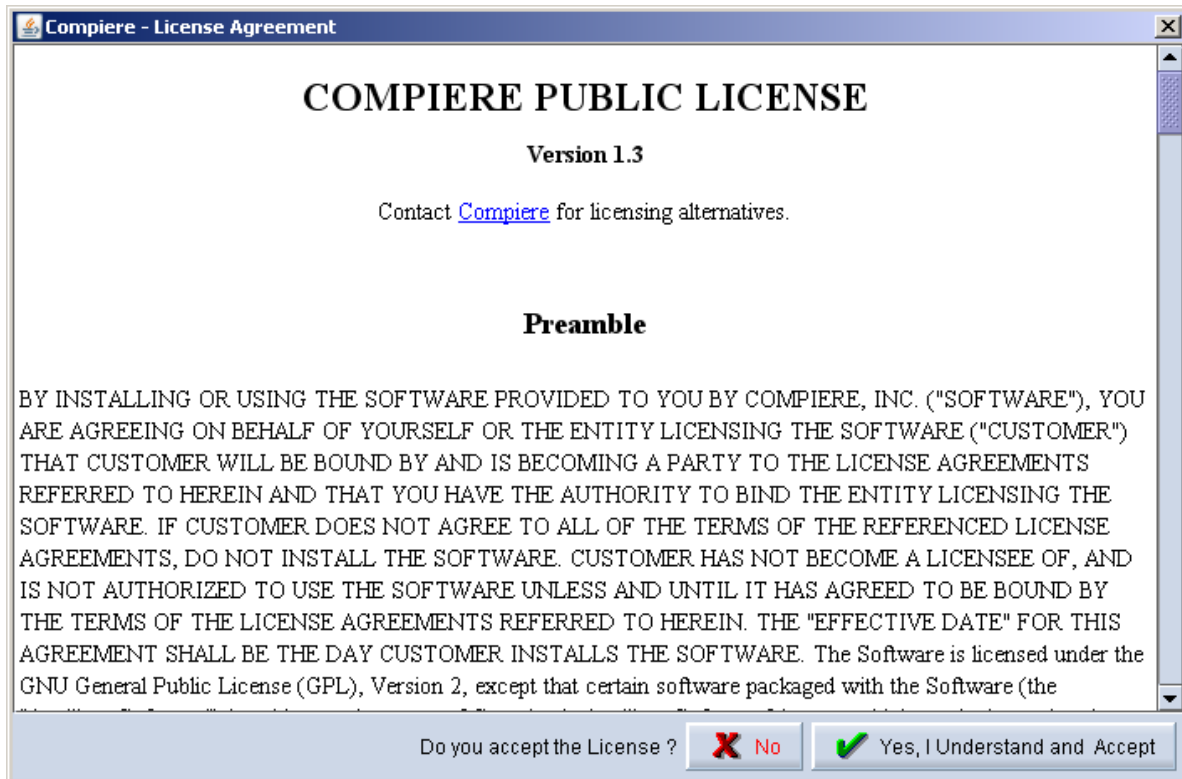
Tip: It is also possible to extract the distribution file into a new directory and copy your configuration files. Then change the **COMPIERE_HOME** environment variable to the new directory.

- 2) Execute **RUN_setup**. Verify all your environment settings and click Save to continue. If you get any errors in the parameters validation, you'll see a red icon right next to the parameter with the problem; make the required changes, click Test to run the validation again and then click Save to continue.

Note: The screen shots show version 3.2.0_Beta but these also apply for 3.6.1.



- 3) The Compiere Public License Opens. Click "Yes, I Understand and Accept" to continue.

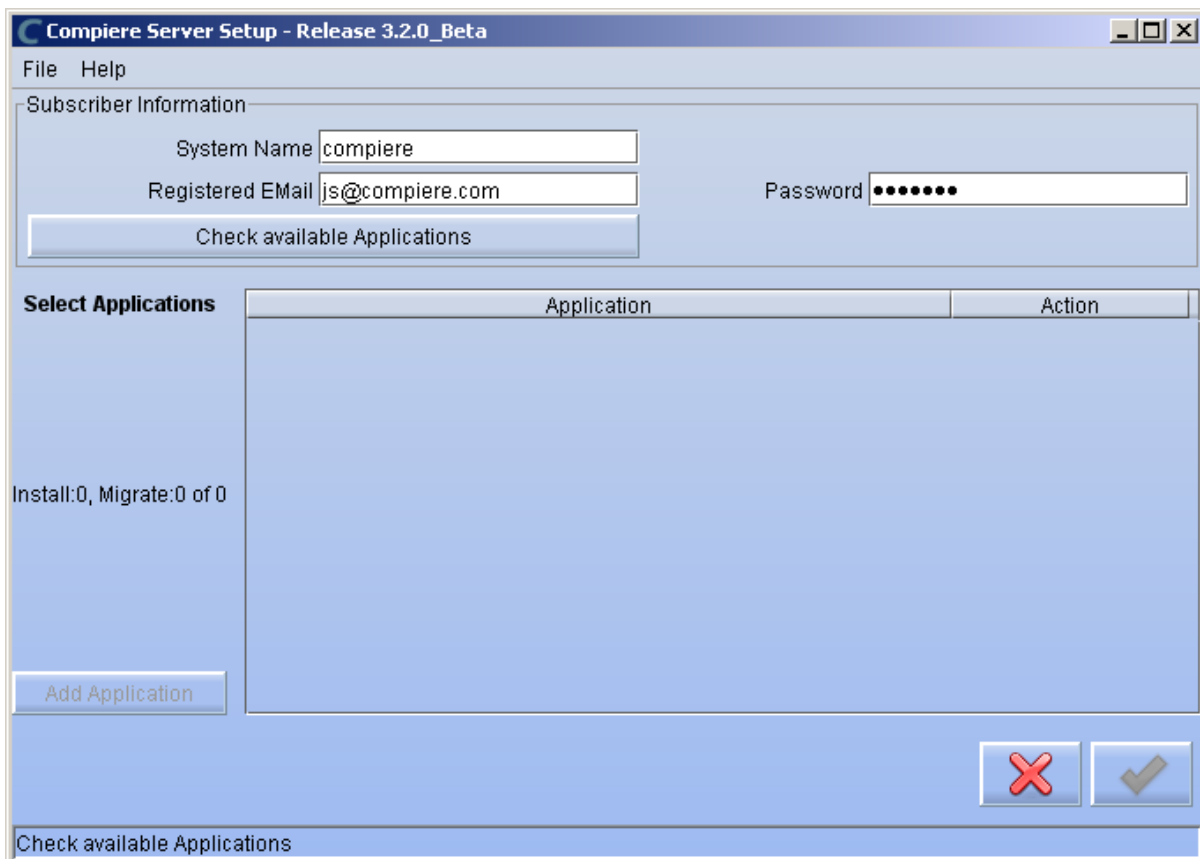


- 4) The following prompt will display describing your new Security Key. Click 'Ok' to continue.



- 5) The Next step is to provide the Subscriber Information. Current customers should provide the subscriber information (System Name, Email and Password) exactly as it was registered in the Compiere Web Store to get a complete list of applications.

Click Check Available Applications to get a list of applications that are available to be installed.

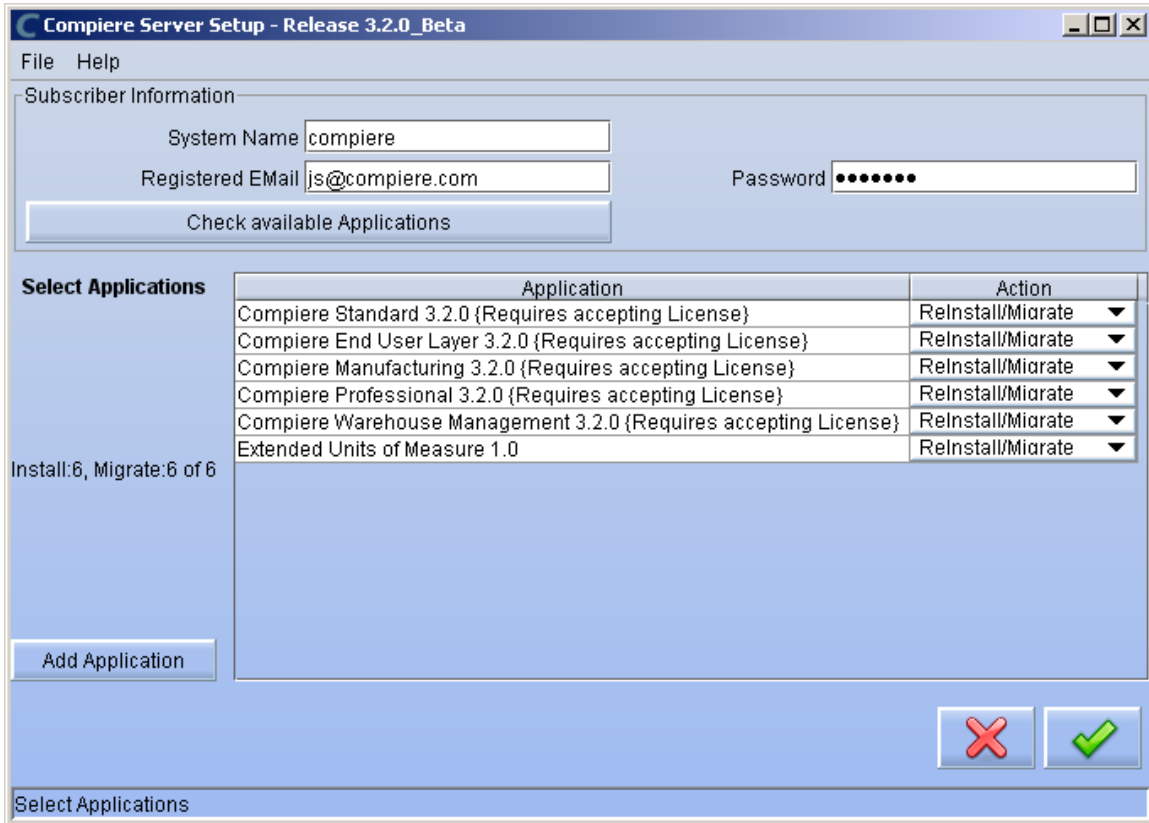


Note: To install additional applications once you have installed or migrated to the latest Compiere Core version, you must select Compiere Core plus any additional applications to install, and then run Migration.

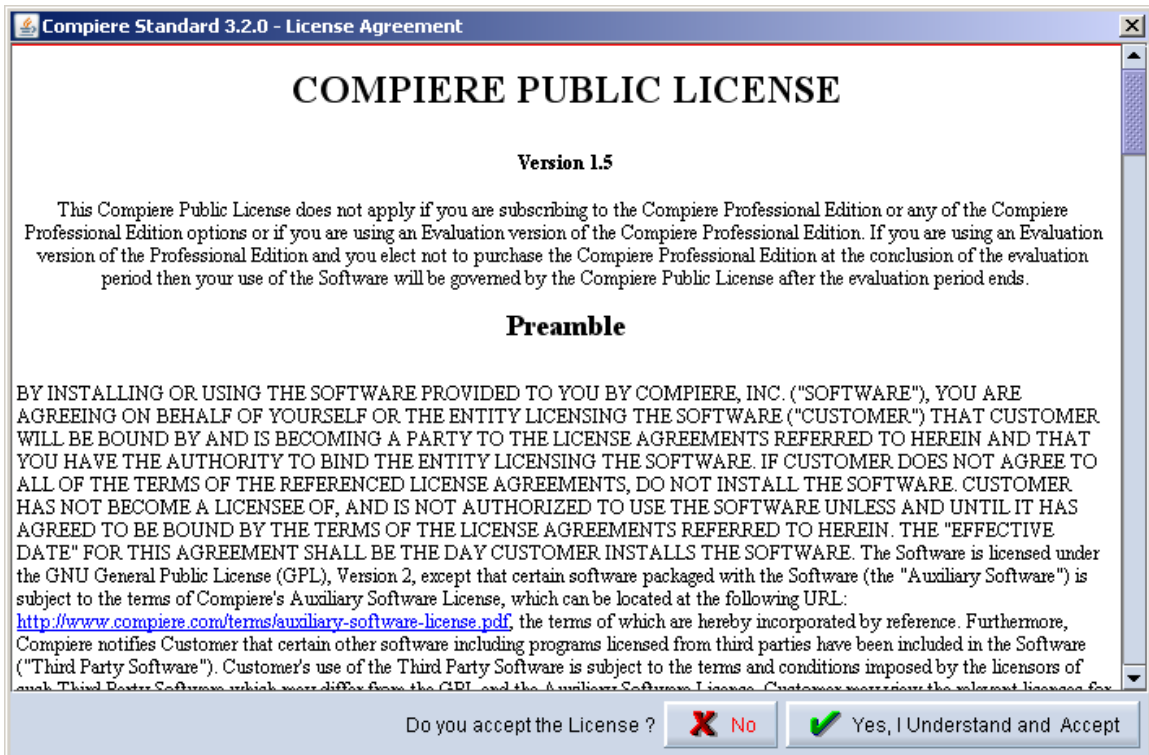
- 6) Select the applications that you want to migrate and select the action **Reinstall/Migrate**. Compiere Standard is the core application that must always be installed or migrated to the latest release, but you also may choose additional applications provided by Compiere or any of our authorized partners.

Tip: If you do not wish to install or migrate any of the applications listed, be sure to change the action to – None- To install new applications change the action to New Install

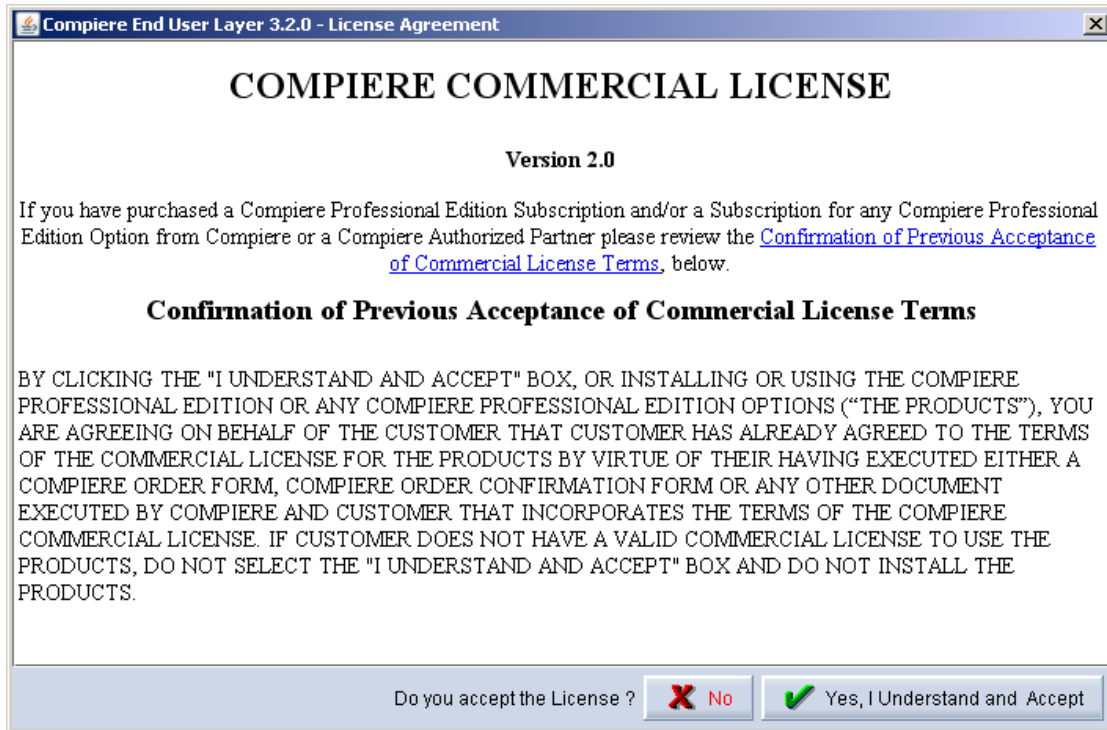
IMPORTANT: If you don't provide the correct email/password or if you don't have Internet connection you won't be able to select Compiere Professional or any of the other optional components



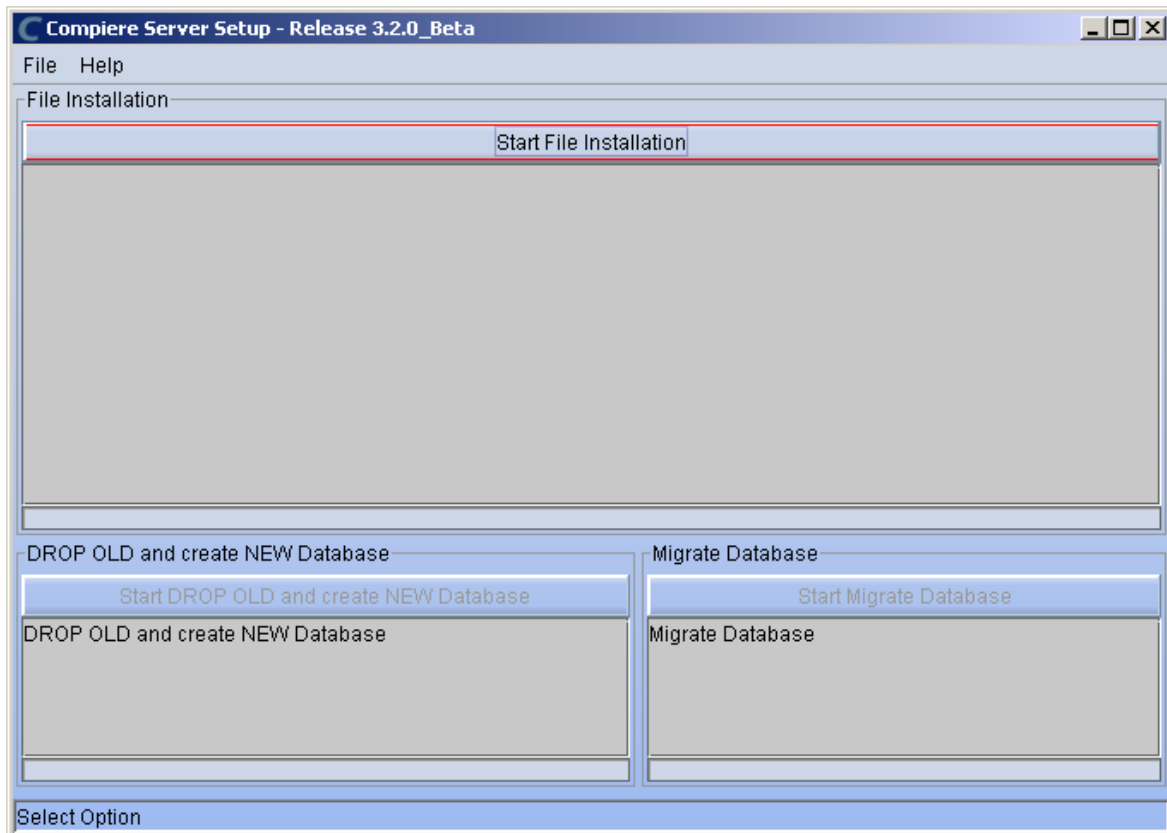
- 7) Next, read and accept the Compiere Public License agreement.
Hint: You might get more than one license agreement, depending on the applications that you are installing. Notice that XUOM is a sample application extension



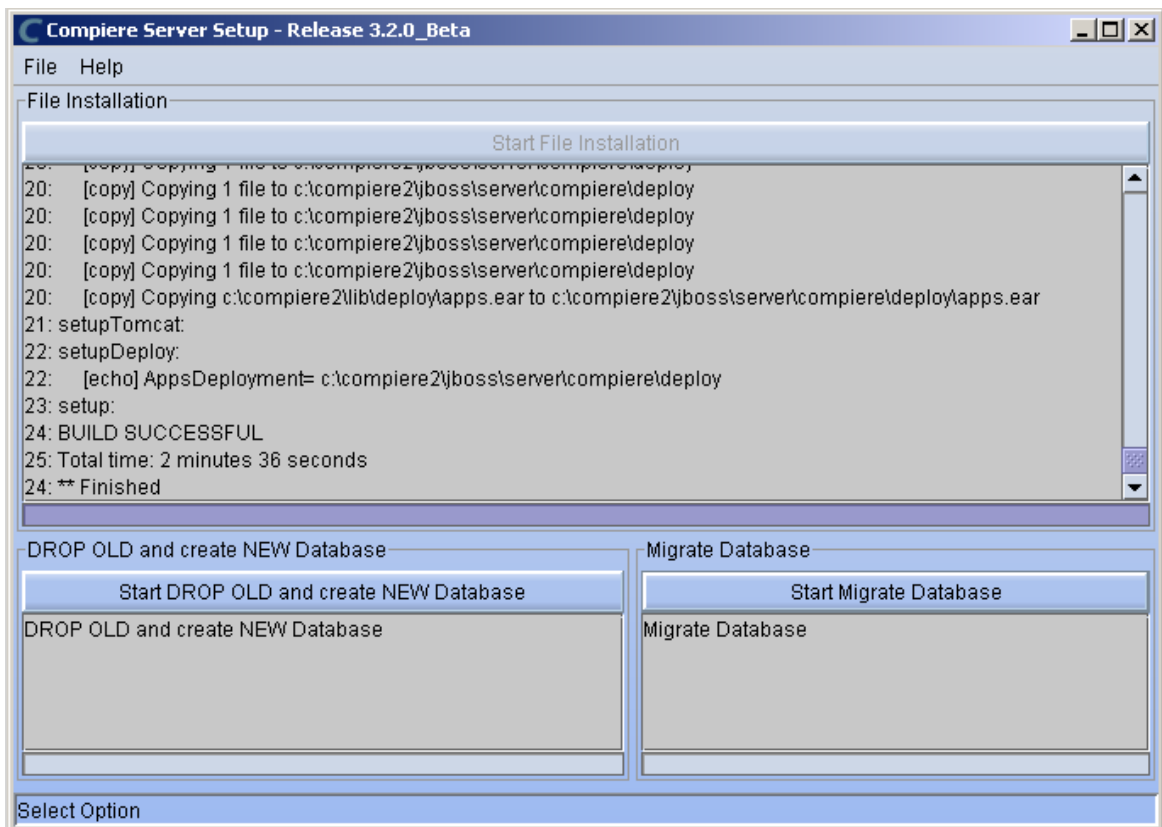
- 8) If you are installing Compiere Professional, you will receive a Commercial license agreement. Please read and accept the license agreement, in order to continue.
Hint: You might get more than one license agreement, depending on the applications that you are installing.



- 9) Click on Start File Installation

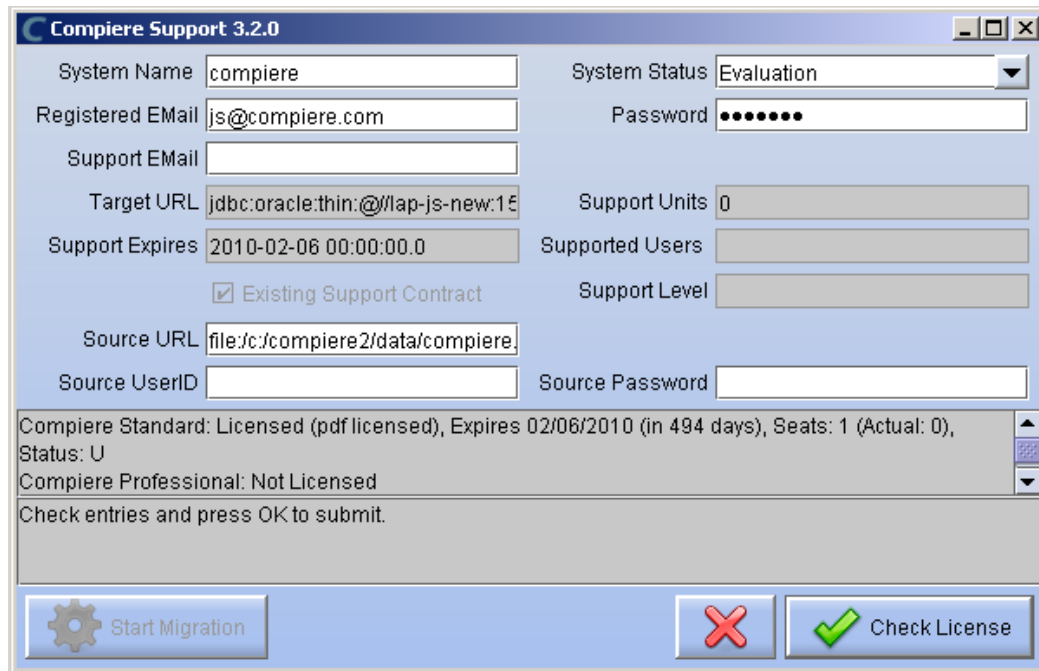


10) When the File Installation has completed click on Start Migrate Database.



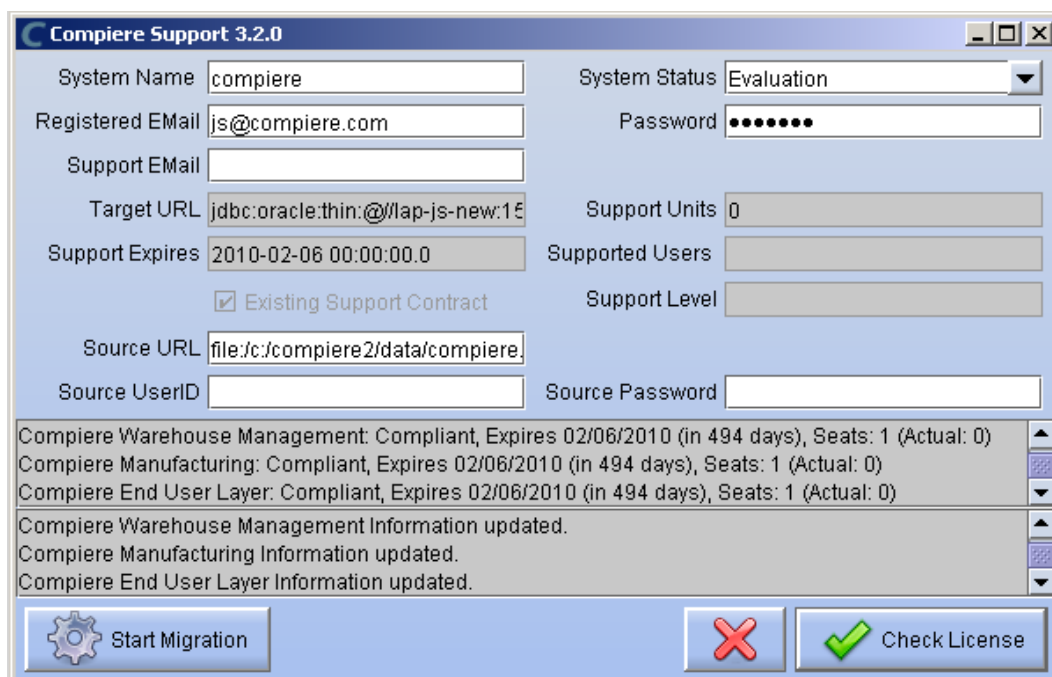
11) Provide the following information exactly as it was registered in the Compiere Web store and click Check License to validate your asset information (Note: This information may already be populated if it was entered in the system window)

- System Name
- Registered Email
- Password

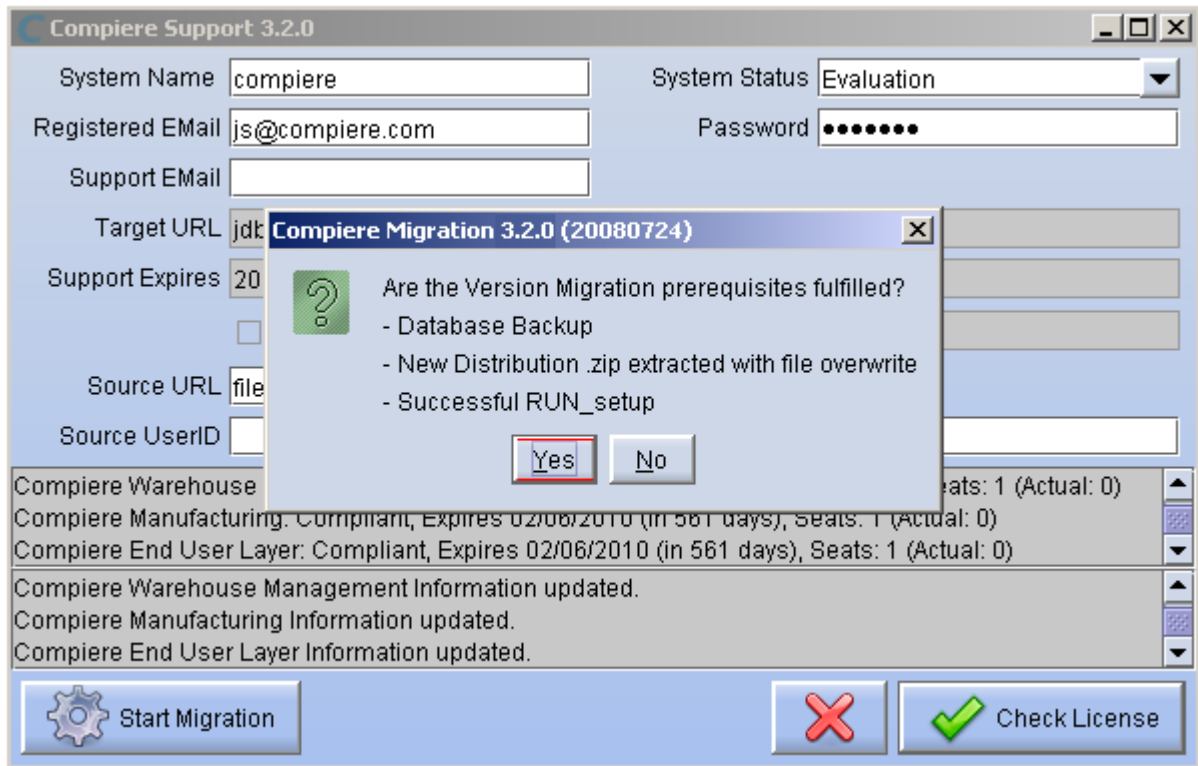


Tip: If you get the “Core Invalid” error after selecting the ‘Check License’ button, that is an indication that you did not select the appropriate action for the Core component in step #5. In this case, Exit the setup and support windows and execute RUN_setup again selecting the Core plus any other components to install.

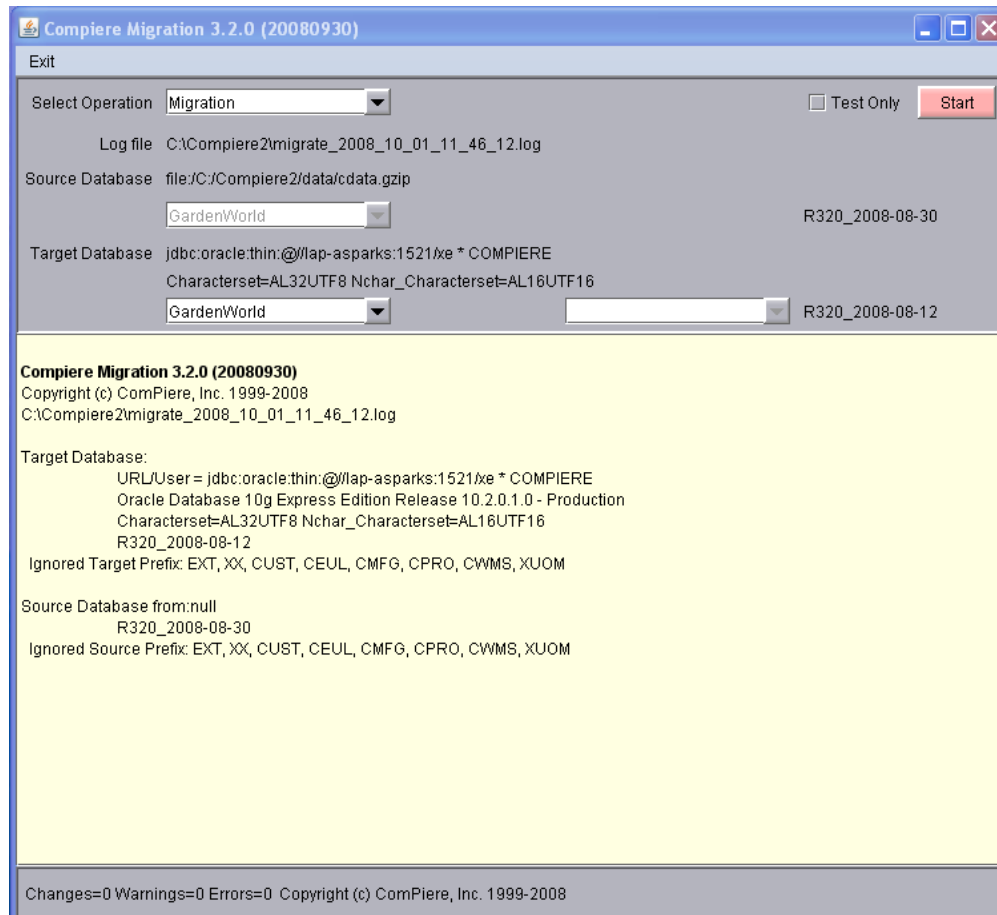
12) Click on “Start Migration”.



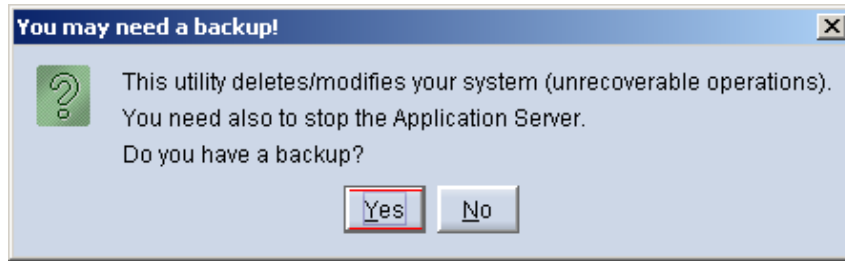
13) At the Compiere Version Migration Prompt, click “Yes” to proceed with the Migration.



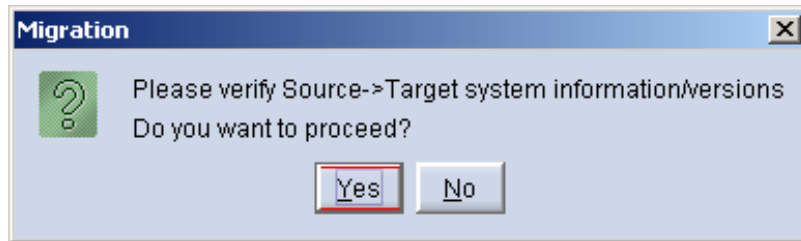
14) Unselect the “Test Only” option, and click Start.



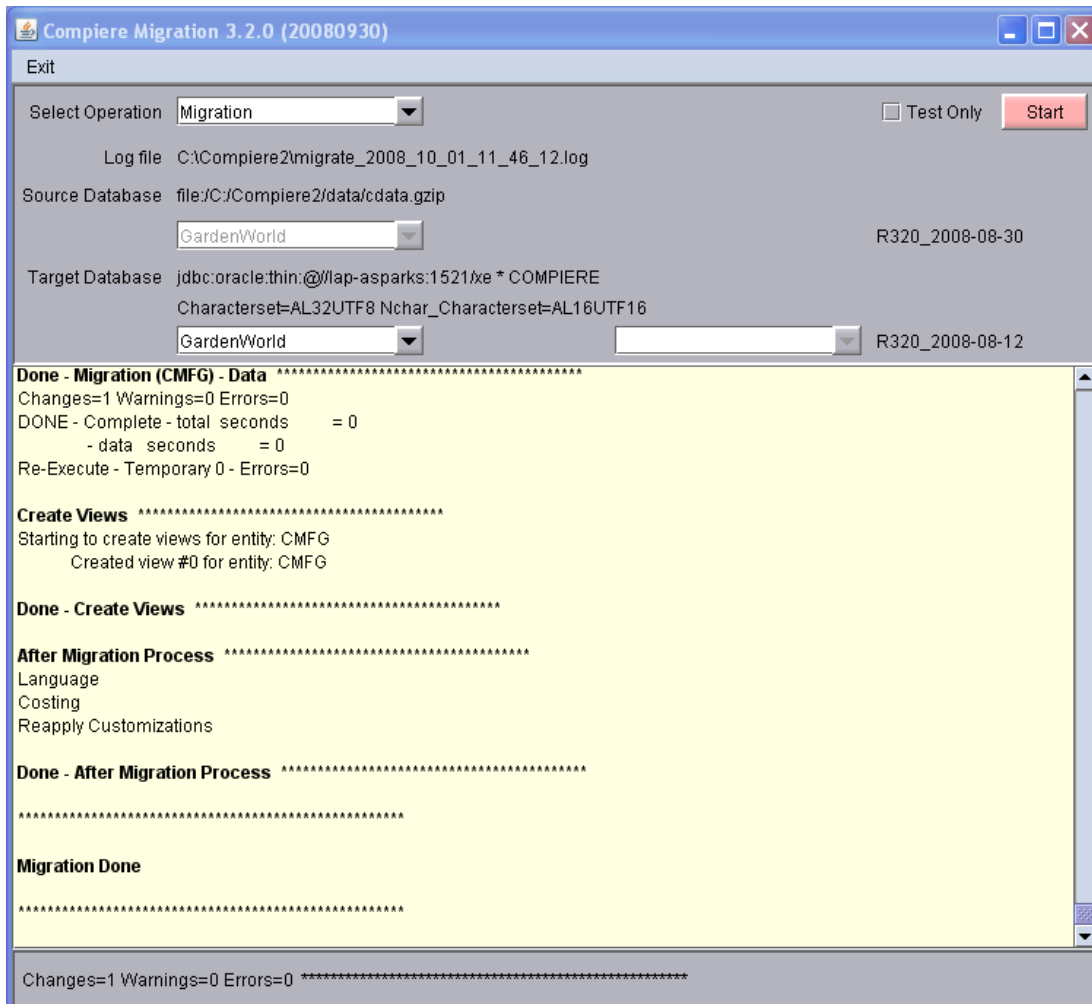
15) Confirm that you have a current back up of your database



16) Confirm that the Source and Target database versions from the Compiere Version Migration window are correct.



17) Verify that the migration finish with no errors and the message “**After Migration - DONE**” is displayed. In case you get any errors, please be sure to review the list of known issues listed in this document before logging a service request.



18) Verify the following log files for errors:

- a. migrate_2010_mm_dd_hh_mi_ss.log: complete log
- b. migrate_2010_mm_dd_hh_mi_ss.err.log: subset of log with just errors
- c. 2010-mm-dd_#.log: possible additional errors not printed to the migration log. (search for the file with the text "Compiere Migration 3.6")

19) If you have a Compiere Professional or Enterprise Edition license, execute **utils/RUN_Support** and click "Check License" to activate your license.

Tip: There is no need to click the start migration button.

20) After you have pressed the Check License button you should be able to see if your Professional License has been activated.

21) After Compiere Professional license has been updated you may click the "X" to close the window.

Hint: It is NOT necessary to click the Start Migration at this point.

- 22) Start the Apps Server using the script `utils/RUN_Server2`
- 23) To start Compiere in the Web UI after migration, it is required that all Web UI users clear their browser cache first.

Multi-Server Installation

Compiere Enterprise Edition

On a multi-server installation, after upgrading the main application server and database you need to run the following on the additional application servers that are used to load balance the web UI connections:

- 1) Unzip the binary distribution to update the Compiere2 folder
- 2) Copy the template for the configuration file
`Compiere2/Utils/CommandLine/CLConfigurationTemplate.sh/bat`
To
`Compiere2/Utils/CommandLine/CLConfiguration.sh/bat`
and configure it so the Apps Server is the local server where you are doing this installation, but the database server is the box where you already installed Compiere
- 3) Execute the following script to run only the file installation
`cd Compiere2/Utils/CommandLine`
`CLFileInstall CLConfiguration.sh`

IMPORTANT: Be sure to use the `CLFileInstall` script. If you use `CLInstall` it will drop your database user

- 4) Delete the files `COMPIERE_HOME/jboss/server/compiere/deploy/compiereRoot.ear` to ensure that there won't be conflicts by having multiple accounting, request, etc. processors
- 5) Start the apps server
- 6) Configure your load balancing solution to distribute part the load to the additional servers. Be sure to use sticky sessions to ensure that all requests from a session go to the same application server.

Support for this feature is only available for customers using Enterprise Edition. For more details about the different [Compiere Editions](#) please see our website.

Note: After migration, (re-) apply the language packs when needed.

Post Migration Steps for RMA/RTV

This step is only relevant if you plan to use the new returns functionality and you are **migrating from 2.6.3 or older**.

Compiere now has explicit return transactions. We discontinued the previously seeded "Return Material" functionality.

In the "Document Type" window you need to do the following for every Tenant/Client:

1) Delete or de-activate the document types

- Return Material
- MM Customer Return
Hint: This is discontinued functionality

If you choose to deactivate the obsolete document types (as opposed to deleting them), please rename the document type 'MM Customer Return' to an alternate name (For eg., ' ** MM Customer Return ** Do Not Use **') so you can successfully create the new document types detailed below.

2) Create Return Document Types

- MM Vendor Return
 - Copy "MM Receipt" and set Name
 - Select Return Transaction
 - De-Select Counter Document flags
 - Optionally select Confirmations
- Vendor RMA
 - Copy "Purchase Order" and set Name
 - Select Return Transaction
 - De-Select Counter Document flags
- MM Customer Return
 - Copy "MM Shipment" and set Name
 - Select Return Transaction
 - De-Select Counter Document flags
 - Optionally create a special Document Sequence and or Confirmations
- Customer RMA (Copy Standard Order)
 - Copy "Standard Order" and set Name
 - Select Return Transaction
 - De-Select Counter Document flags
 - Select AR Credit Memo for Invoice Document Type
 - Select the created MM Customer Return for Shipment Document Type
 - Optionally create a special Document Sequence

Unfortunately, we cannot do the above steps automatically as this is configuration specific user data.

Tip: For an example of a set-up, please check GardenWorld in a fresh install or in a newly created Tenant.

Appendix B

Compiere 3.6.1 – Installation Instructions

Compiere 3.6.1 Installation Instructions

This is for a new installation of Compiere. If you already have installed a previous version of Compiere, please refer to the Migration instructions.

Prerequisites

- Database Oracle XE, Oracle 10gR2, Oracle 11g or EnterpriseDB Postgres Plus Advanced Server 8.3.
- Important:** It is mandatory to use a Unicode character set
- Database approved Linux Operating System, Windows 2003 or Windows XP
- Disk Space: > 5 GB (includes database)
- Swap Space: > 1GB
- Memory: > 512 MB - Recommended: > 1 GB
- TCP/IP connection
- Network setup with DNS server and a domain.
- Tip:** Do not use IP addresses.
- Internet access

Hint: Notice that the screenshots in this document refer to the installation on Windows, but the process is the same for Linux, except for the paths (e.g. C:\Compiere2 vs. /Compiere2) and the extension of the scripts (.bat vs. .sh)

Database Installation

Install Database – For the instructions on how to install Oracle XE and EnterpriseDB on Windows and Linux please use the install guide on the Compiere website <http://www.compiere.org/support/installation.php>.

If you are using Oracle XE you need to modify the following database parameters:

- Start SQL*Plus (Start => Programs => Oracle Database 10g Express Edition => Run SQL Command Line)
- connect system/compiere
- alter system set processes=100 scope=spfile;
- alter system set sessions=100 scope=spfile;
- Re-start the database (Start => Programs => Oracle Database 10g Express Edition => Stop DB & then Start DB)

Java Installation

1. Download and install [Sun Java JDK 6](#) (SDK), update 5 or higher.
Important: The Compiere Server requires the JDK (not just JRE).
2. For installation instructions see the JDK section on this page: <http://java.sun.com/javase/6/webnotes/install/index.html>

Download Compiere

3. Install /Setup Compiere Server (this includes the Client as well)
 - 1) Download the current version of Compiere: [Web Store](#) (for current customers) or free [Community Edition and Professional Trials](#).
 - 2) Extract the .zip file. The steps shown assume that you extract to the root directory, resulting in a COMPIERE_HOME of C:\Compiere2 in Windows or /Compiere2 in Linux.
 - 3) Verify that the bin directory for your database executables is included in the PATH. Also, if using Oracle XE on Linux, run \$ORACLE_HOME/bin/oracle_env.sh.

To update the PATH in Windows, right click on My Computer and choose Properties. Then move to the advanced tab and click on Environment Variables. Find the PATH variable and click Edit.

- 4) Verify that the path to the JAVA_HOME is set up in the Environment Variables.

To update the JAVA_HOME in Windows, right click on My Computer and choose Properties. Then move to the advanced tab and click on Environment Variables. Find the JAVA_HOME variable and click Edit.

- 5) Execute the script \$COMPIERE_HOME/RUN_Setup.

Tip: if the following window does not display, please ensure that the following are updated.

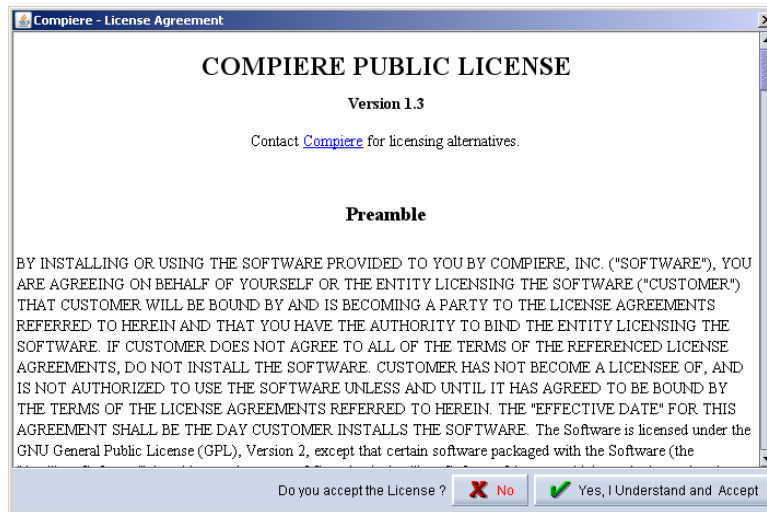
- Add the bin folder where you have installed JDK 1.6 at the beginning of the **PATH** system environment variable.
- Set the JAVA_HOME system variable to the location of your java installation (e.g., 'C:\Program Files\Java\jdk1.6.0_05')
- Set the COMPIERE_HOME system variable to the path of your Compiere installation (e.g., 'C:\Compiere2')

Note: Compiere requires Internet connection for installation. If you are using a proxy server then you need to modify the script RUN_setup to set your proxy options.

- 6) Select Database Type Oracle XE, Oracle (for Standard or Enterprise Editions) or PostgreSQL (for EnterpriseDB).
- 7) For System Password, enter the System database User password (e.g. manager)
- 8) For Database Password, enter the Compiere database user password, (e.g. 'compiere')
- 9) For Server Names, i.e., Application, Database and Mail, use the DNS name of the server. **Hint:** Do not use localhost (127.0.0.1) or IP addresses.

- 10) Enter or update any other parameters as necessary.
- 11) Select the Help button, for information on any field.
- 12) Select the Test button to check the parameters. **Tip:** The parameters will only save after they have been verified.
- 13) If an entry is unverifiable, it will display with a red X. Correct the entry and re-select Test.
- 14) Once all fields are verified, click the Save button to proceed.

- 15) The Compiere Public License Opens. Click “Yes, I understand and Accept” to continue.



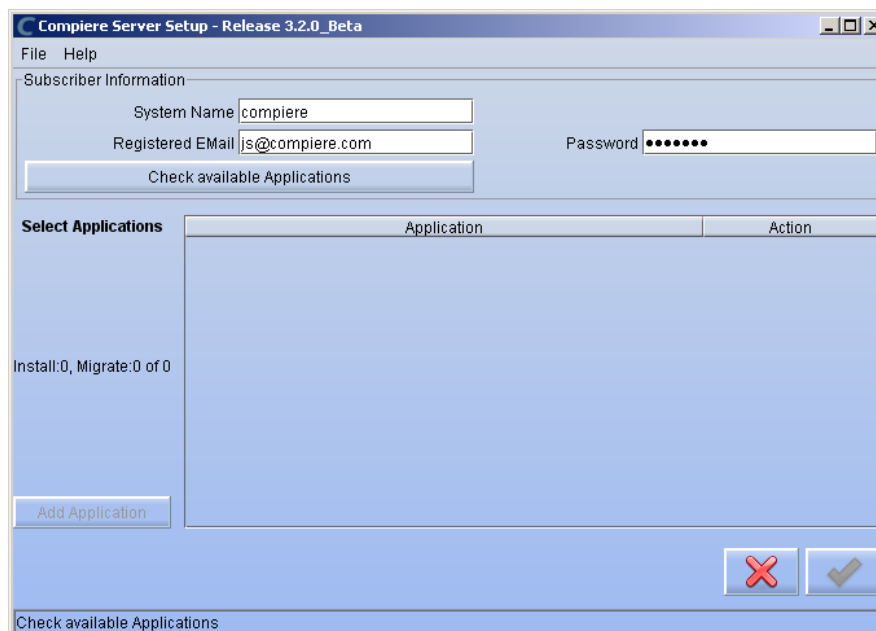
- 16) The following prompt will display describing your new Security Key. Click 'Ok' to continue.



- 17) The Next step is to provide the Subscriber Information. Current customers should provide the subscriber information (System Name, Email and Password) exactly as it was registered in the Compiere Web Store to get a complete list of applications.

Click Check Available Applications to get a list of applications that are available to be installed.

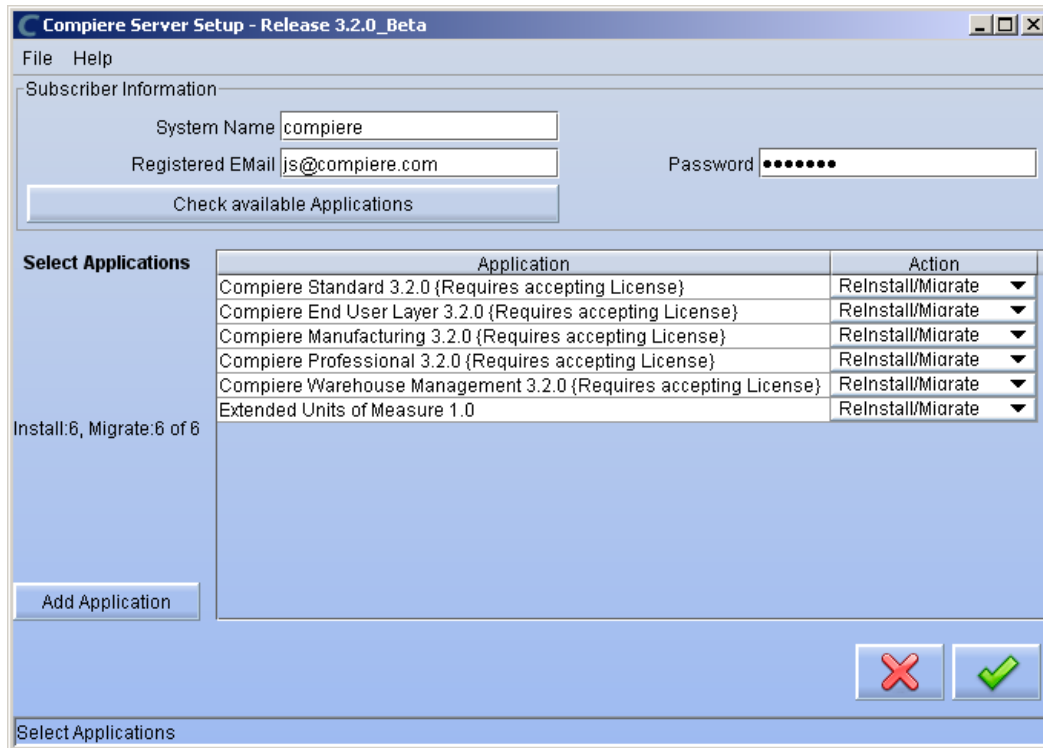
Tip: Community Edition users may leave the fields blank and click “Check available components” to install the Community Edition.



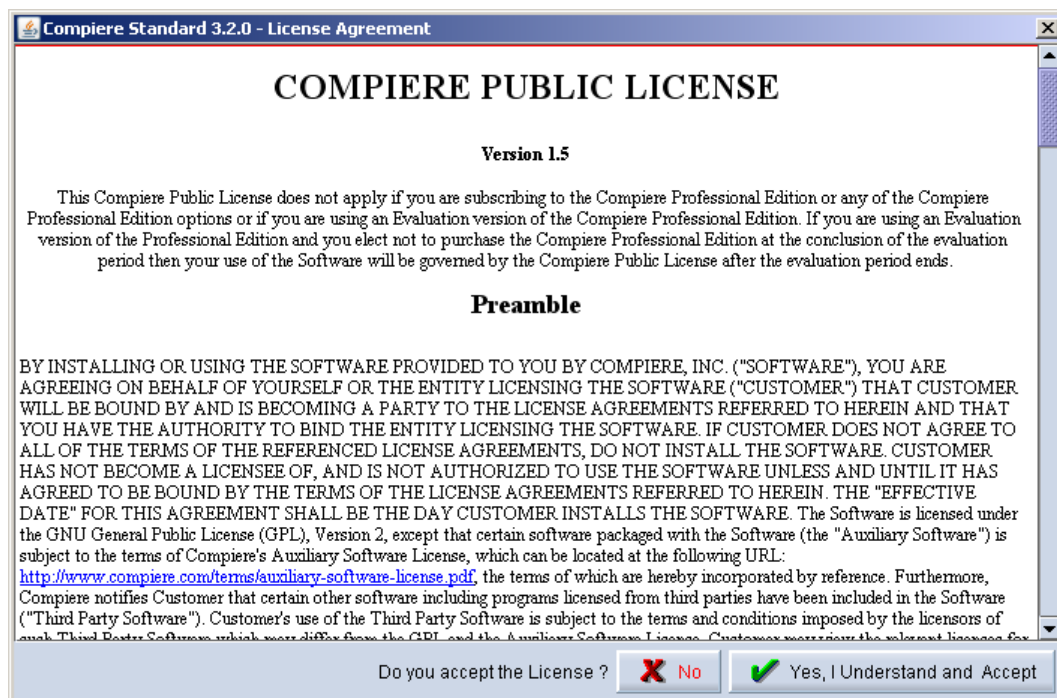
- 18) Select the applications that you would like to install. You can include additional applications by using the button Add Application.

By default all available applications will be installed. If you do not wish to install one of them you should change the action field from "New Install" to "-None-". Notice that Compiere Core is a *Mandatory Prerequisite* and must be selected.

Select the OK button to continue

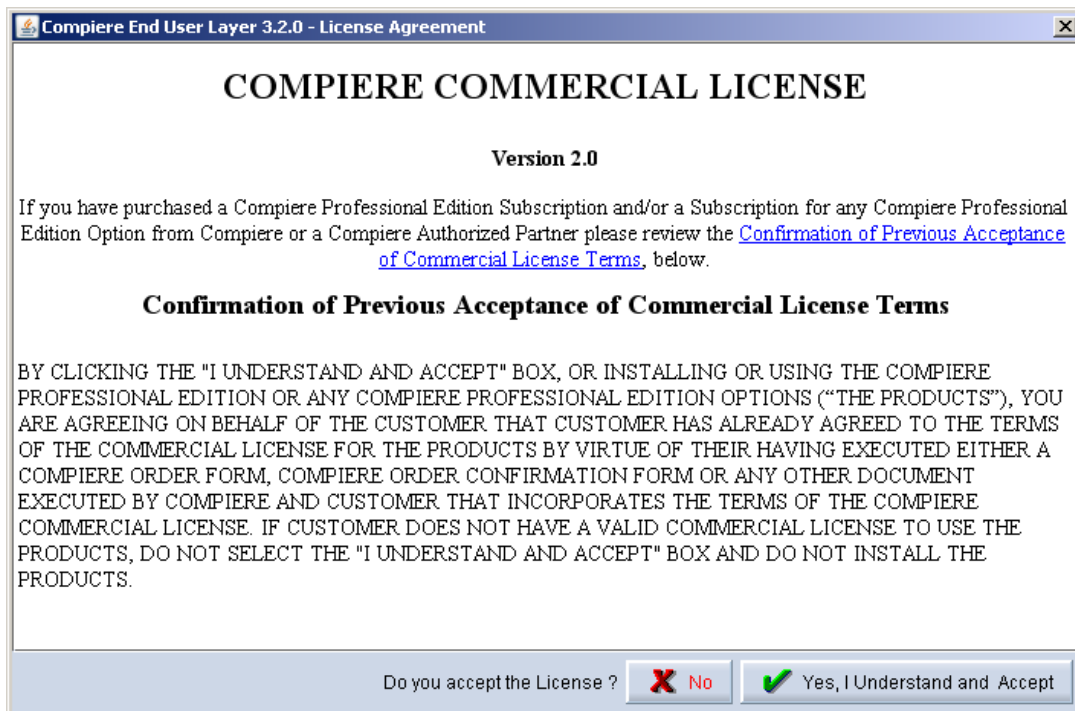


- 19) Next, read and accept the Compiere Public License agreement.
Hint: You might get more than one license agreement, depending on the applications that you are installing.

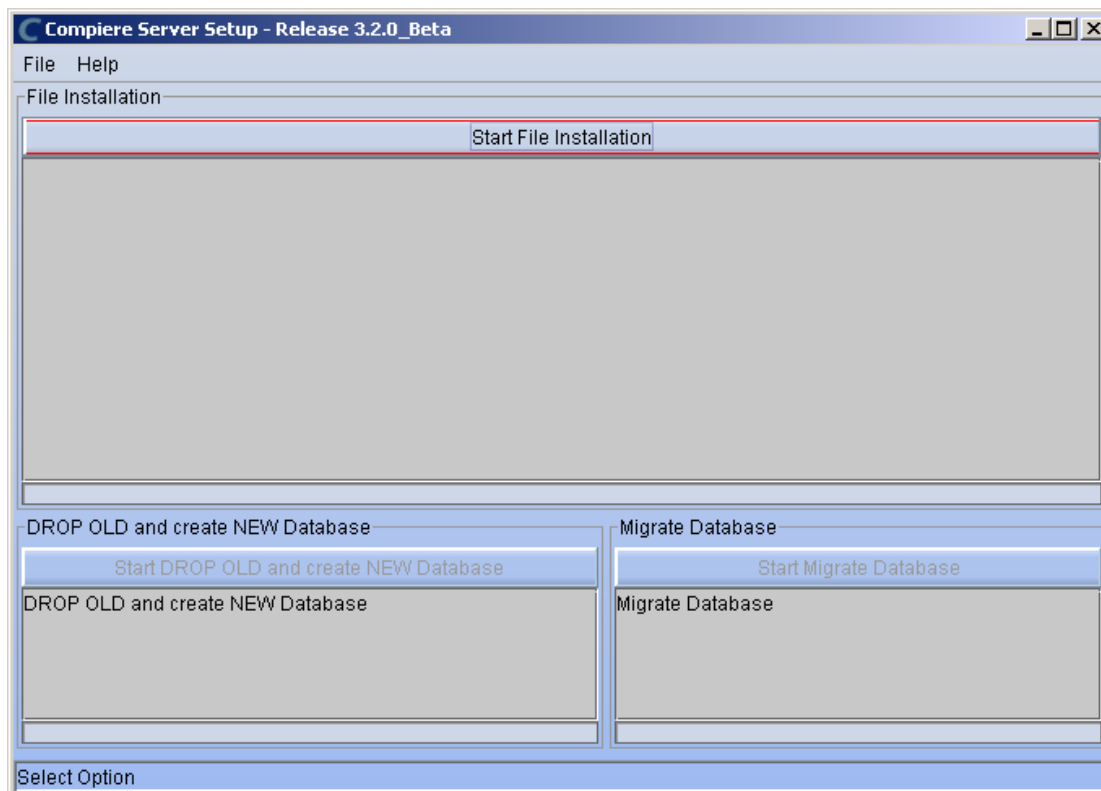


20) Then read and accept the Compiere Commercial License agreement.

Hint: You might get more than one license agreement, depending on the applications that you are installing.



21) After accepting the license agreement the following window will display:

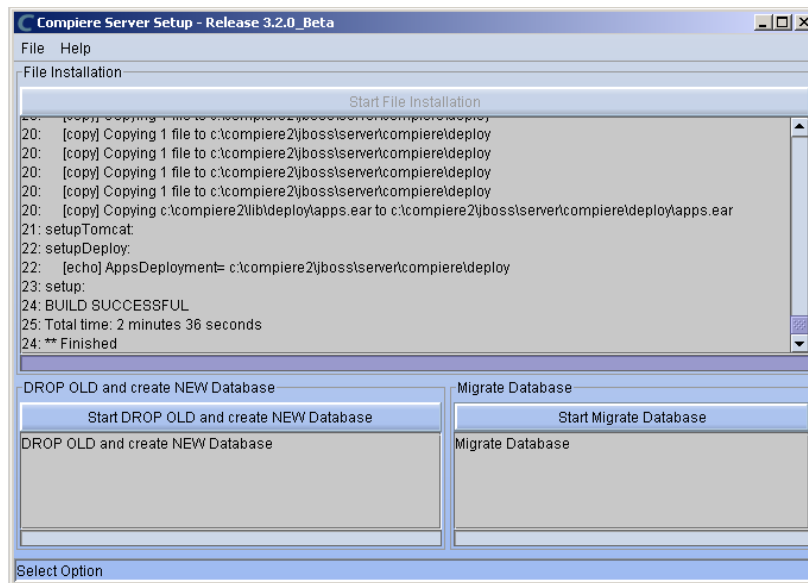


22) Select Start File Installation.

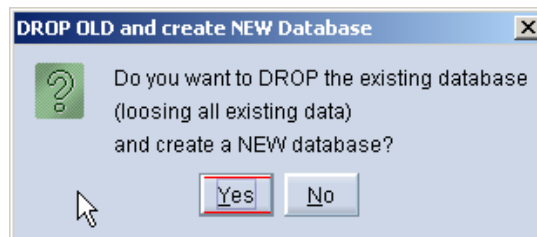
Important: At this point, you must be connected to the internet to continue or the installation will not succeed.

23) Once the file installation is complete, select Start Create New Database.

Note: If you already have a Compiere database in your system, you will be presented with a split panel after 'Start Server Install'. Click the left panel (Start DROP OLD and create NEW Database) if you want to replace the existing database with the new database.

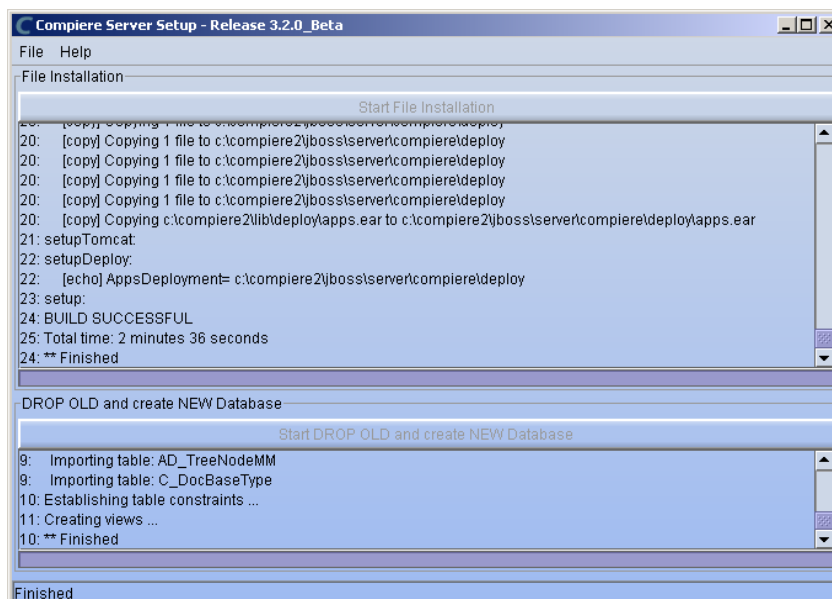


24) At the prompt select 'Yes' to Drop the existing Database and create a new database.



Warning: If you choose to replace the existing database, all data in the existing database will be removed.

25) Verify that you see a '10: ** Finished' message at the end of this step. Then a new window should pop-up to do the license validation.



26) The Compiere Support window opens. Complete the necessary fields in order to validate your assets.

Hint: If you only intend to use the Community Edition of Compiere 3.0, you may skip the following steps and go to the Application Server section.

Important: For customers with a valid support contract with Compiere, this is a required step to ensure that the features associated with the support level are enabled. If you are a customer and do not have a web store login, please contact your system administrator or Compiere Support first. If you are not a customer and would like to obtain a trial license for the Professional Edition, please [Contact Us](#) and request the files for the Professional Edition.

27) Provide the following information exactly as it was registered in the Compiere Web store and click Check License to validate your asset information.

- System Name (name provided in the web store registration)
- Registered Email (email address provided in the web store registration)
- Password (web store password)

Compiere Support 3.2.0

System Name	compiere	System Status	Evaluation
Registered EMail	js@compiere.com	Password
Support EMail		Support Units	0
Target URL	jdbc:oracle:thin:@lap-js-new:15	Supported Users	
Support Expires	2010-02-06 00:00:00.0	Support Level	
<input checked="" type="checkbox"/> Existing Support Contract		Source URL	file:/c:/compiere2/data/compiere
Source UserID		Source Password	

Compiere Standard: Licensed (pdf licensed), Expires 02/06/2010 (in 494 days), Seats: 1 (Actual: 0), Status: U
Compiere Professional: Not Licensed
Check entries and press OK to submit.

Start Migration [X] Check License

28) To verify your license, click the “Check License” button.

Tip: Do not click Start Migration.

Notice that internet access is required to validate the license information.

- 29) Next, review that your license information has been validated. If you have a trial license for Compiere Professional, but you currently don't have a license with Compiere, you will see that the license for Standard is invalid. This is expected as the trial doesn't include Standard and you may ignore the error.

- 30) After Compiere Professional license has been verified, click the “X” to close the window.

Note: If you get the error “You do not have an appropriate license to use this feature” when starting the web UI, then login to the server and execute `utils/RUN_Support` to validate again your license and restart the application server. When using the Swing client, ensure that your database connection information matches exactly the information in the target URL in `RUN_Support` (including the fully qualified server name)

- 31) Close any additional Setup and /or Support windows.

Run Application Server

4. Start the Compiere Application Server
 - 1) Execute `utils/RUN_Server2`.
 - 2) There should be no errors. Check the logs in `$COMPIERE_HOME/jboss/server/compiere/log` to verify this.
 - 3) Common problems include ports already in use:
 - 17:41:09,085 ERROR [NamingService] Could not start on port 1099
java.net.BindException: Address already in use:
JVM_Bind at java.net.PlainSocketImpl.socketBind(Native Method)
 - There is another program using port 1099; Stop it and restart `Run_Server2` or setup Compiere to use another port in `RUN_setup`.

Likely port conflicts:

- 80 - Other web server running (or you need privileges under Linux/Unix)
- 8080 – Used by Oracle Database
- 1099 - Often used by IDEs for debugging, or by internet messengers (Skype, Gtalk, etc.)

Start Compiere

5. Start the Compiere Client.

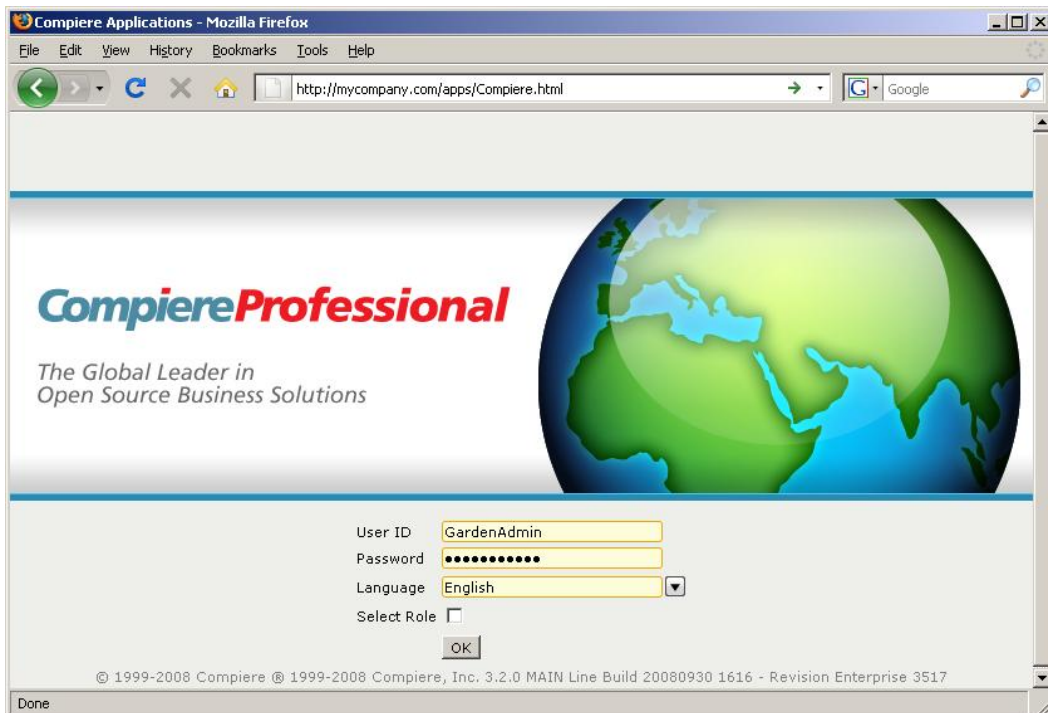
- 1) Start the Swing client by double clicking on the Compiere shortcut in your desktop or by executing **RUN_Compiere2** from the \$COMPIERE_HOME directory.

Default users and passwords for the sample Garden World application:

- GardenUser/GardenUser
- GardenAdmin/GardenAdmin
- System/System
- SuperUser/System



- 2) Alternatively, if you have access to the Professional Edition, you can launch the application from the browser by using the URL: <http://server:port/apps>, (e.g. <http://mycompany.com:80/apps>.)
Tip: For optimal performance, the Firefox browser is recommended for using the Compiere Web User Interface.



Information: For additional information see the Compiere home page <http://www.compiere.com>.

Appendix C

Compiere 3.6.1 – Application Extensions

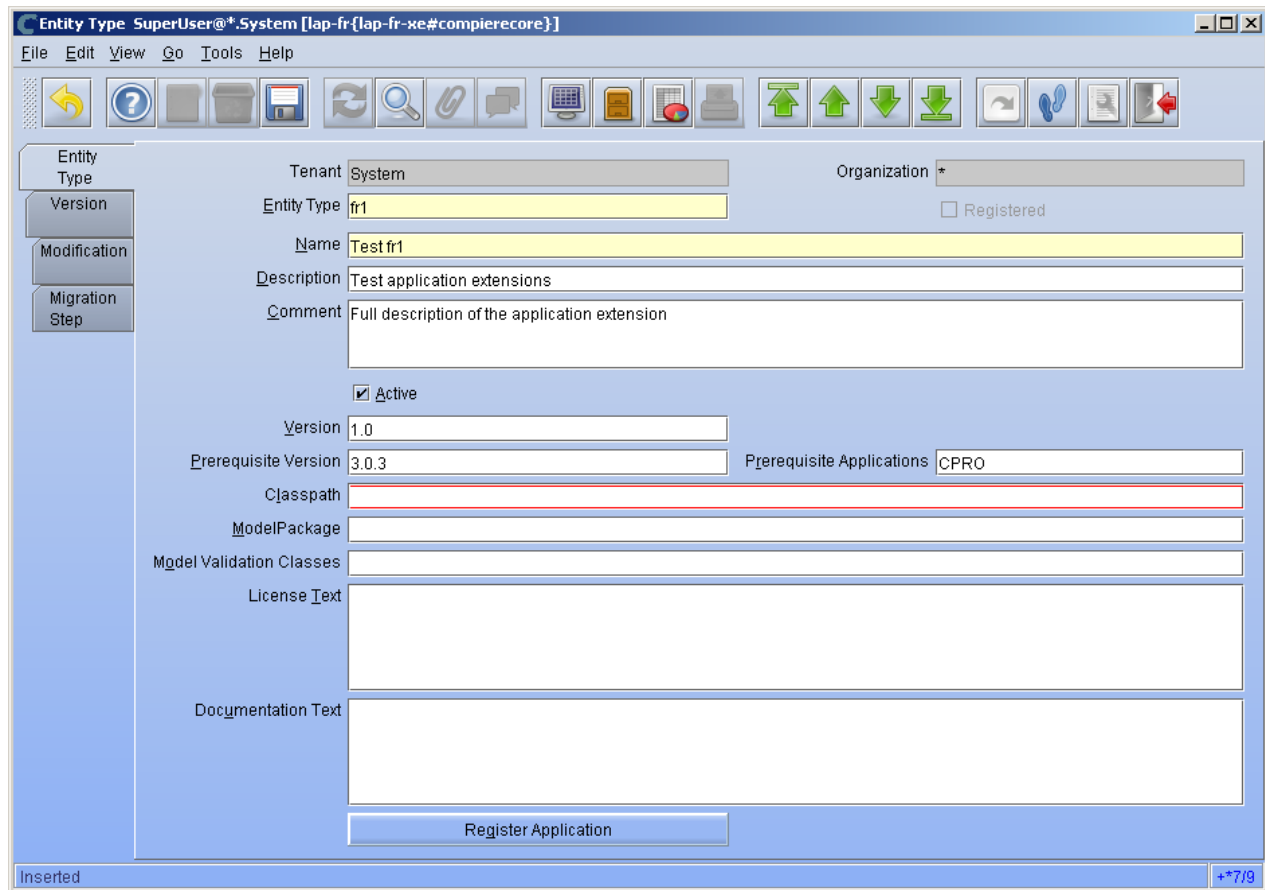
Compiere 3.6.1 Application Extensions - Compiere Partners

This section is for Application Extensions in Compiere available as functionality in 3.6.1 is for Partners only. This framework will allow Partners to create application extensions that include both reference data and code, and can be distributed to their customers through Compiere.

Registration of Application Extensions – Application Provider (Partner)

Use the steps below to register for Application Extensions:

- 1) To register an Application Extension, log a Support Request with Compiere.
- 2) Login with the System Administrator role.
- 3) Open the Entity Type window (Application Dictionary => Entity Type) and create a new record.



The screenshot shows the 'Entity Type' window in Compiere. The window title is 'Entity Type SuperUser@*.System [lap-fr{lap-fr-xe#compierecore}]'. The menu bar includes File, Edit, View, Go, Tools, and Help. The toolbar contains various icons for navigation and actions. The main form area is divided into several sections:

- Entity Type:** Tenant: System, Organization: *
- Version:** Entity Type: fr1, Registered:
- Modification:** Name: Test fr1, Description: Test application extensions, Comment: Full description of the application extension
- Migration Step:** Active, Version: 1.0, Prerequisite Version: 3.0.3, Prerequisite Applications: CPRO
- Classpath:** (Empty field)
- ModelPackage:** (Empty field)
- Model Validation Classes:** (Empty field)
- License Text:** (Empty field)
- Documentation Text:** (Empty field)

At the bottom of the form is a 'Register Application' button. The status bar at the bottom left shows 'Inserted' and the bottom right shows '+*7/9'.

Hint: Be careful not to modify the entities C, D, CPRO or XUOM.

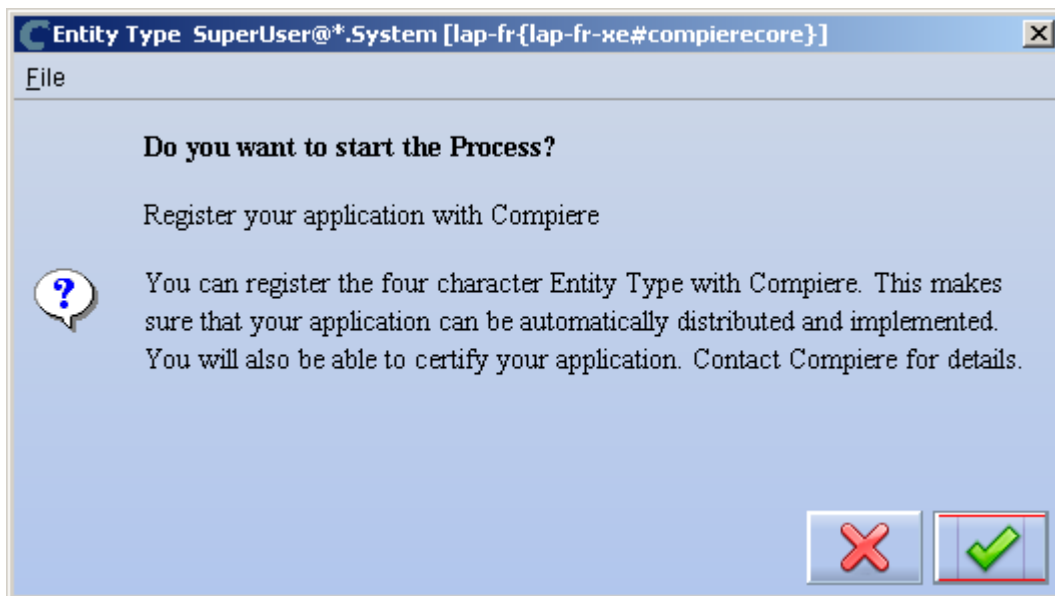
Important: Complete all the mandatory fields. For entity type, notice that names beginning with “C” and “X” are reserved for Compiere and you must use four characters.

Comments about optional fields:

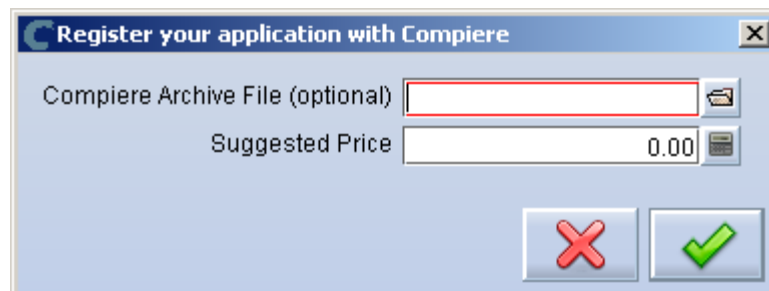
- Version: The version of your extension. Usually 1.0 for the first version.
 - Prerequisite version: The Compiere Core version that is required for this extension, e.g. 3.3.0. You need to use the exact text as defined for the entity type D.
 - Prerequisite applications: The entity type of the applications that need to be installed in order to install this extension. For example, set it to CPRO if the extension must be applied on top of the professional edition.
 - Classpath: List of additional jar files required for this extension.
 - Model package: Specific model package from the jar files listed in the classpath field.
- 4) You do not need to enter any information on the Version, Modification, or Migration Step tabs.
 - 5) Ensure that your System window contains your up to date information for your system and web store email/password information.
 - 6) Click "Register Application" to send your request to Compiere.

Tip: If an entity type with the same name has already been registered you'll get an error "Error: Already registered: XXXX". You will have to create a new record with the new entity type. Verify with Compiere that the new entity type that you plan to use is available.

- 7) Click 'Ok' to start process.



- 8) Leave the defaults in place and click 'Ok' to continue.

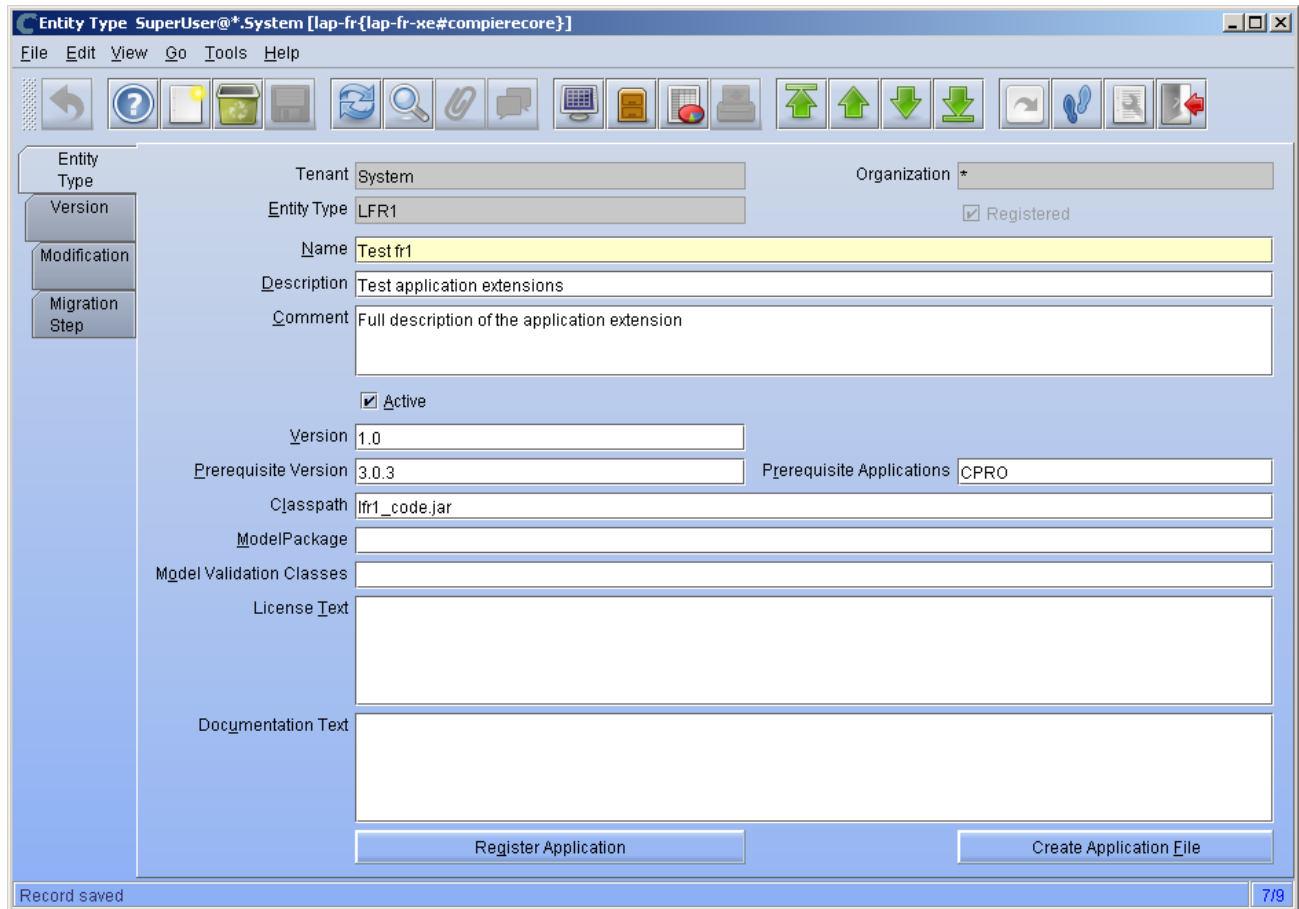


- 9) At this point the status will be pending approval from Compiere. Please log a support request in our case management system requesting the approval of your component including a long description and license type.

Creation of Application .car file – Application Provider (Partner)

Follow the steps below to create the Application.car file:

- 1) Make all the application dictionary changes using the entity type that you registered in the previous step.
- 2) Generate jar files for the custom code required by your extension.
- 3) After having your new Entity Type approved by Compiere; login to Compiere with the System Administrator role and query the entity type that you registered in the previous step and click “Create Application File.”

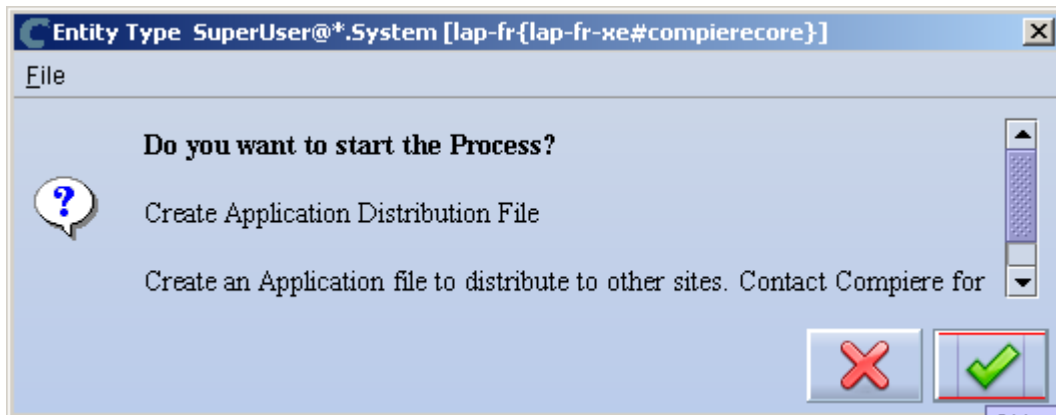


The screenshot shows the 'Entity Type' configuration window in Compiere. The window title is 'Entity Type SuperUser@*.System [lap-fr-{lap-fr-xe#compierecore}]'. The left sidebar contains buttons for 'Entity Type', 'Version', 'Modification', and 'Migration Step'. The main area contains the following fields and controls:

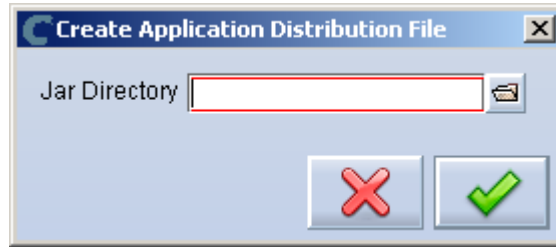
- Tenant: System
- Organization: *
- Entity Type: LFR1 (with a checked 'Registered' checkbox)
- Name: Test fr1
- Description: Test application extensions
- Comment: Full description of the application extension
- Active:
- Version: 1.0
- Prerequisite Version: 3.0.3
- Prerequisite Applications: CPRO
- Classpath: lfr1_code.jar
- ModelPackage: (empty)
- Model Validation Classes: (empty)
- License Text: (empty)
- Documentation Text: (empty)

At the bottom, there are two buttons: 'Register Application' and 'Create Application File'. A status bar at the bottom left says 'Record saved' and the bottom right shows '7/9'.

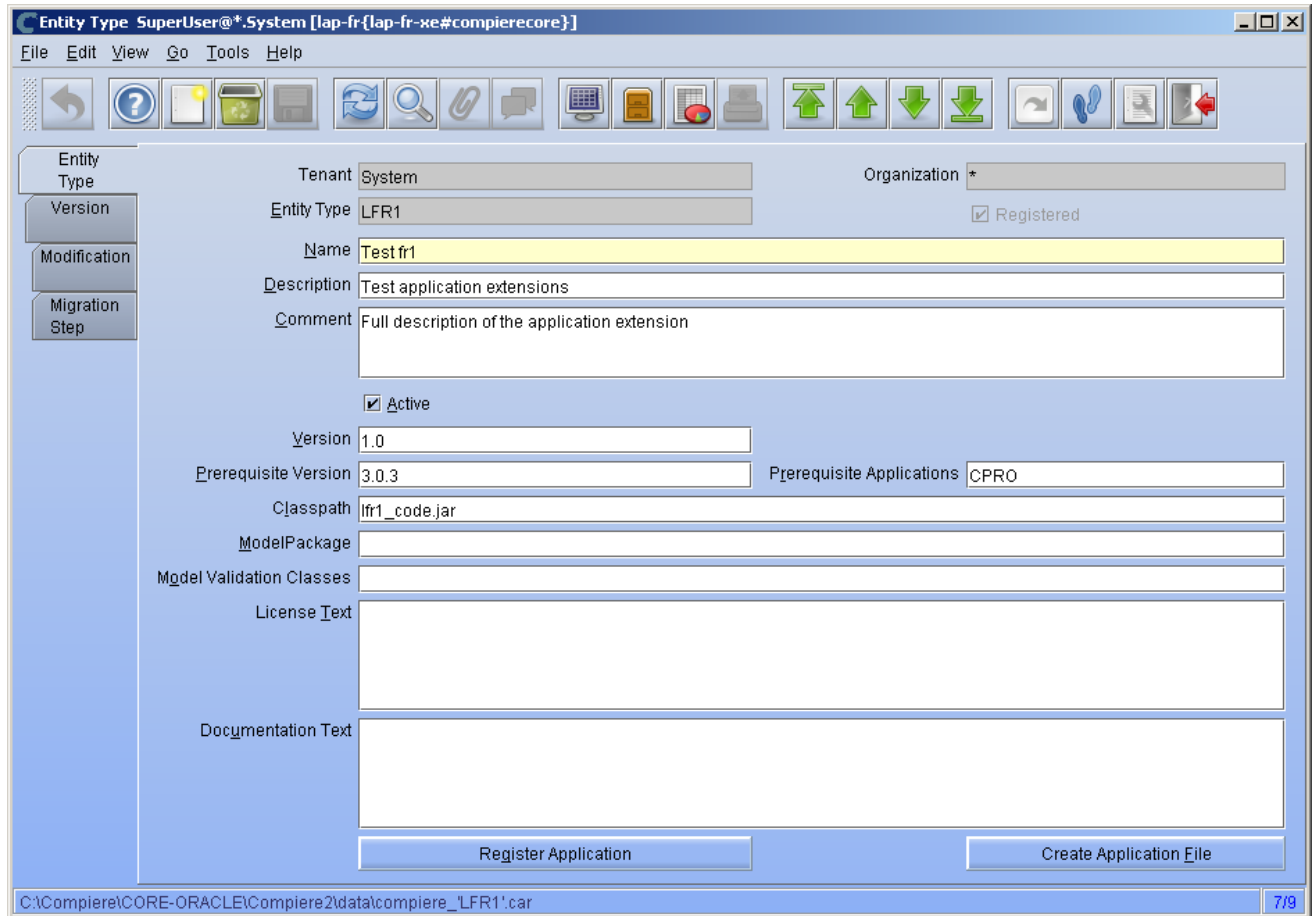
- 4) Click 'Ok' to start process.



- 5) Provide the directory for the jar file listed in the field classpath.



- 6) The car file will be generated in the COMPIERE_HOME/data directory. The newly generated .car file will have a name of compiere_XXXX.car.



Important: The naming convention for .car files has changed, (e.g. compiere_'CPRO'.car from 3.0 and 3.1 is now compiere_CPRO.car in 3.3, i.e. without quotes in the file name). If a customer unzips the Compiere installation files into the same directory, it is possible to end up with both compiere_'CPRO'.car as well as compiere_CPRO.car. This in turn will cause Compiere Professional to show up twice in the installation window. To avoid this situation, customers will need to manually delete compiere_'CPRO'.car and compiere_'XUOM'.car from COMPIERE_HOME/data directory. These are the only two .car files that Compiere has distributed prior to 3.2. If a customer has created any additional .car files prior to 3.2, it is necessary to follow the same procedure for those .car files as well.

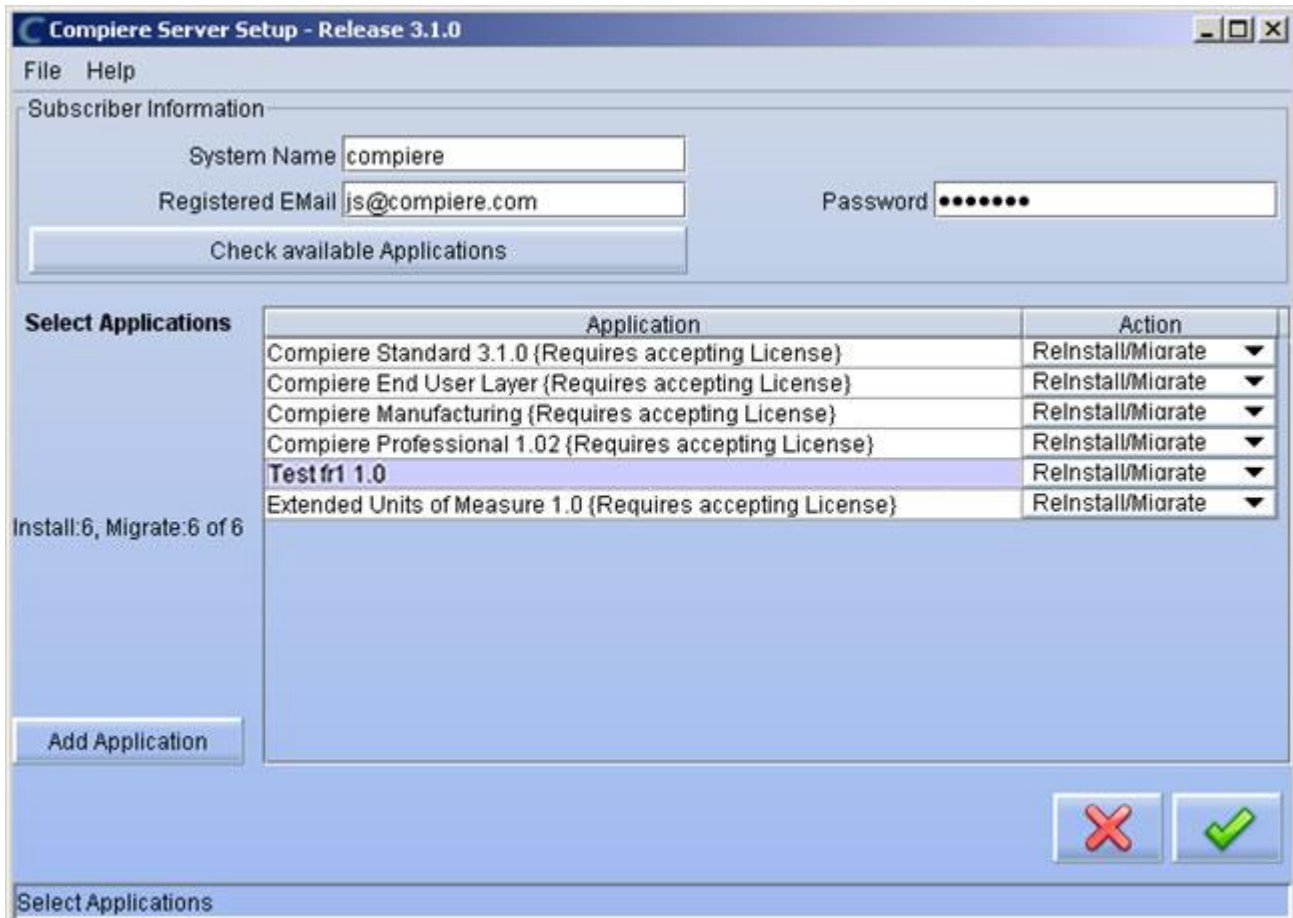
Installation – Application Consumer (Customer)

Follow the steps below to install the Application:

- 1) After obtaining the car file for the application extension, copy it to the directory COMPIERE_HOME/data.
- 2) Execute RUN_Setup (see Appendix A for details on the setup information.)

Important: Be sure to have internet connection available to be able to get the license terms for the application extensions that you plan to install.

- 3) When you get to the window to select the applications, besides the application extension that you need to install, also select the option Reinstall/Migrate for Compiere Core 3.3.



- 4) Then continue with the MIGRATION steps as usual. (See Appendix A for more details.)

Appendix D

Compiere 3.6.1 – Command Line Scripts

Command Line Scripts

Scripts are provided in the `$COMPIERE_HOME/utils/CommandLine` directory for experienced Compiere users who would like to perform Compiere instance creation and maintenance via command line or using automated scripts.

CLInstall

Purpose: To create a new Compiere installation. When this script is run a new Compiere instance is created on the database specified via configuration file. Please note that existing Compiere database instance is dropped and a fresh new Compiere instance is created when this script is run.

The script validates the components that can be installed against Compiere License server and hence need to be connected to internet while running and have the appropriate license to allow you to install the components. The script also updates the License information after the instance is created.

All the component `.car` files present in `$COMPIERE_HOME/data` will be installed as long as you provide the correct subscriber information, otherwise only the standard application will be installed.

1) Environment Variables `$COMPIERE_HOME`, `$JAVA_HOME` need to be set.

2) The configuration parameters to CLInstall are provided via a configuration file. A template `CLConfiguartionTemplate` is provided in the same directory, which you can make a copy and edit the configuration parameters for your specific installation. All the parameters have one to one correspondence with the parameters on the first window that comes up when running `RUN_setup`

Subscriber information for License validation: `CL_SYSTEM_NAME`, `CL_WEBSTORE_EMAIL`, `CL_WEBSTORE_PASS`

Homes: `CL_COMPIERE_HOME`, `CL_JAVA_HOME`, `CL_JAVA_TYPE`

Database: `CL_COMPIERE_DB_TYPE`, `CL_COMPIERE_DB_SERVER`, `CL_COMPIERE_DB_PORT`,
`CL_COMPIERE_DB_NAME`, `CL_COMPIERE_DB_SYSTEM`, `CL_COMPIERE_DB_USER`,
`CL_COMPIERE_DB_PASSWORD`

Apps Server: `CL_COMPIERE_APPS_TYPE`, `CL_COMPIERE_APPS_SERVER`, `CL_APPS_SERVER_DEPLOY_DIR`,
`CL_COMPIERE_JNP_PORT`, `CL_COMPIERE_WEB_PORT`

SSL Settings: `CL_COMPIERE_SSL_PORT`, `CL_COMPIERE_KEYSTOREPASS`

Mail: `CL_MAIL_SERVER`, `CL_ADMIN_EMAIL`, `CL_MAIL_USER`, `CL_MAIL_PASSWORD`

3) Running:

CLInstall takes in the configuration file as a parameter.

Sample Usage: `>CLInstall.bat CLConfiguration.bat`

Errors while running the script are displayed onto the console window and are also written to log files within the same directory.

CLMigrate

This is very similar to `CLInstall.bat` except that it performs the migration of a Compiere instance instead of dropping and recreating a new instance.

CLUpdateLicense

This script can be run to update the license information instead of executing `RUN_Support`. The script can be only run in a successful Compiere installation created via `RUN_Setup` or installation/migration via command line. The script can be edited to provide different subscriber information for license validation.

The following line in CLUpdateLicense.bat

```
"%COMPIERE_JAVA%" %COMPIERE_JAVA_OPTIONS% -cp %CLASSPATH% com.compiere.client.UpdateLicense
```

can be changed as follows to pass in the subscriber information

```
"%COMPIERE_JAVA%" %COMPIERE_JAVA_OPTIONS% -cp %CLASSPATH% com.compiere.client.UpdateLicense --  
sysname xxx --email xxx --password xxx
```

If the parameters are not specified, the subscriber information at the time of installation will be used to update the Licenses