



## Compiere 3.7 Release Notes

---

July 11, 2011

---

# Table of Contents

## Compiere 3.7.0 Release Notes

<b>Compiere 3.7.0 Release Summary</b>	<b>3</b>
Audience	3
Prerequisites	3
<b>Software Management</b>	<b>3</b>
Previous Installations	3
Recommended Infrastructure	3
Process to Log Support Requests	3
Update/Migration Procedure	3
Install Procedure	3
Application Extensions	3
Command Line Scripts	3
<b>New In Compiere 3.7.0</b>	<b>4</b>
Blanket Orders	4
Drop Shipments	4
Consigned Inventory	4
Changes to existing functionality	4
Technical Notes	6
Web User Interface	6
<b>Product Enhancements for Compiere 3.7.0</b>	<b>7</b>
<b>Product Bugs for Compiere 3.7.0</b>	<b>8</b>
<b>Known Issues in the Migration Process</b>	<b>15</b>
<b>Known Issues in the Install Process</b>	<b>15</b>
<b>Known Issues in Compiere 3.7.0</b>	<b>16</b>
<b>Appendix A</b>	<b>18</b>
<b>Compiere 3.7.0 Migration Instructions</b>	<b>19</b>
Prerequisites	19
Preserving Customizations	19
Migration Steps	19
Preparation	20
Test Mode (optional)	20
Migrate to a New Release	20
Multi-Server Installation	30
Post Migration Steps for RMA/RTV	31
<b>Appendix B</b>	<b>32</b>
<b>Compiere 3.7.0 Installation Instructions</b>	<b>33</b>
Prerequisites	33
Database Installation	33
Java Installation	33
Compiere Installation	33
Run Application Server	42
Start Compiere	43
<b>Appendix C</b>	<b>44</b>
<b>Application Extensions - Compiere Partners</b>	<b>45</b>
Registration of Application Extensions – Application Provider (Partner)	45
Creation of Application .car file – Application Provider (Partner)	47
Installation – Application Consumer (Customer)	49
<b>Appendix D</b>	<b>50</b>
<b>Command Line Scripts</b>	<b>51</b>

---

# Compiere 3.7.0 Release Summary

Compiere 3.7 introduces the new functionality including blanket orders, drop shipments and consigned inventory. Compiere 3.7.0 also includes 15 customer/partner enhancement requests and 93 customer/partner bug fixes.

For more details on the changes made in previous releases please see the release notes from <http://wiki.compiere.com/display/docs/Compiere+Release+Notes>

Certain features in Compiere require a Compiere Professional or Enterprise Edition subscription. Contact a Compiere Authorized Partner or Compiere Sales (<http://www.compiere.com/company/contact-us.php>) to acquire Compiere subscription.

Compiere may include certain prototype features and beta functionality as indicated in their respective user interfaces with a beta checkbox. These are not recommended for production. They are intended only for evaluation as beta functionality.

## Audience

This guide is designed for Compiere Business Partners and Customers. It provides essential information for current Compiere administrators planning to install or migrate (upgrade) to Compiere 3.7.

## Prerequisites

- Working knowledge of Compiere ERP and CRM
- Compiere Web Store Access
- Sun Java JDK 1.6.0 Update 5 or Later
- Database Oracle XE, Oracle 10gR2, Oracle 11gR2, or EnterpriseDB Postgres Plus Advanced Server 8.3, 8.4SP1

## Software Management

### Previous Installations

You can download the Compiere 3.7.0 from <http://www.compiere.com/wstore>. The migration tool will bring you up directly to Compiere 3.7 plus all the cumulative fixes included in the service packs without having to migrate to an intermediate release.

### Recommended Infrastructure

- Sun Java JDK 6 Update 5 or Later (not just JRE)
  - also known as Sun Java SDK.
- Database Oracle XE, Oracle 10gR2, Oracle 11gR2, or EnterpriseDB Postgres Plus Advanced Server 8.3, 8.4SP1.  
*Tip:* It is Mandatory to use a Unicode character set.
- Database approved Linux Operating System, Windows Server 2003, 2008, Windows XP, Windows 7
- TCP/IP connection and Internet access
- Disk Space: > 5 GB (includes database)
- Swap Space: > 1GB
- Memory: > 1 GB
- Firefox Browser 3.5 is recommended for Web User Interface, but IE7 and IE8 are also supported.

### Process to Log Support Requests

To ensure timely service for any issues, please use the Compiere's Case Management system. For details please review the [Support Requests](#) page on our website.

### Update/Migration Procedure

See [Appendix A](#)

### Install Procedure

See [Appendix B](#)

### Application Extensions

See [Appendix C](#)

### Command Line Scripts

See [Appendix D](#)

---

## New In Compiere 3.7.0

The following is a detailed description of the enhancements made available in Compiere 3.7.0.

### Blanket Orders

Compiere 3.7 supports blanket sales orders and blanket purchase orders. Blanket orders can be setup for specific customers and vendors. Based on the agreement that you may have with your business partner, order release intervals can be setup so that sales orders and purchase orders are generated in periodic buckets. Additionally, you can override the release interval setup and manually release orders as you please and change product quantities as desired

### Drop Shipments

Compiere now supports drop shipments out of the box. You can receive sales orders from customers and generate purchase orders for your vendors and have them directly ship products to your customers. You can bill and receive payments from your customer and make payments to your vendor

### Consigned Inventory

Compiere supports vendor consigned inventory wherein your vendor places products in your warehouse. You take ownership of the product as and when you consume it and pay the vendor based on your consumption

### Changes to existing functionality

Sales Order Drop Shipment column no longer used

In Compiere Release 3.7, we introduced the Drop Shipment feature. This functionality allows you to select specific sales order lines for drop shipment. Hence, the drop shipment column in the Sales Order (C\_Order.IsDropShip) is no longer used by Compiere. This column and its values will be retained during migration, however any code or views that refer to this column have been updated to refer to the Sales Order Line drop shipment column (C\_OrderLine.IsDropShip). If you have logic that depends on the Sales Order drop shipment column, it needs to be reviewed and fixed appropriately. We recommend rewriting your logic to use the Sales Order Line Drop Shipment column.

#### Drop Shipment Accounts

In Compiere Release 3.7, we introduced the Drop Shipment feature. This feature requires you to setup 2 new accounts: Drop Ship Asset and Drop Ship COGS. During migration, these accounts will default from Product Asset and Product COGS. You MUST update these values to ensure that Product Assets and COGS are reported correctly when you use Drop Shipments. Even if you do not plan to use Drop Shipments immediately, we recommend you create new accounts and assign them to Drop Ship Asset and Drop Ship COGS. For details on Drop Shipment Accounting, please review Drop Shipment documentation.

#### Maintain Query Log

Prior to Compiere Release 3.7, every SQL query executed by the system was logged. To improve performance, beginning with Compiere release 3.7 we will no longer automatically log all queries. If you want to log queries, you need to enable the Maintain Query Log checkbox for each Role.

#### Gapless Sequences

A new "Gapless" flag was added in 3.6 for the ID and document sequences. When the flag is checked, sequences continue working as in previous releases where the sequence row is locked until the transaction is committed, allowing it to keep the sequence numbers without gaps even if the process fails, but creating a significant contention

---

issue for concurrent users trying to use the same sequence.

Starting with Compiere Release 3.7, we have reduced the number of sequences that are automatically created as gapless. There are no changes to the gapless sequence functionality and there will be no changes to your existing setup. When you create a new tenant, only the invoice document types will be created with gapless sequences. All other sequences will be setup to allow gaps. If your business requires you to create gapless sequences, you must enable the Gapless checkbox for the additional sequences. When you define a new sequence in the Document Sequence window, the Gapless checkbox will default to unchecked. You must explicitly check it to enable Gapless functionality for the sequence you are defining. We recommend you mark sequences as Gapless only if absolutely necessary. Each sequence that you mark as Gapless will impact performance and throughput.

### Character Encoding

To allow printing reports on languages that require a different character encoding (for example characters like è, à in Lithuanian) a new field "encoding" was added to the language window. The default code page is Cp1252 (English and some other Western European Languages)

### Info Window query criteria

In the Web UI, it is now possible to mark Info Window query criteria as mandatory. Navigate to the Info Column in the Info Window and enable the Mandatory UI checkbox for one or more query criteria. When you want to query data using the Info Window, you will be required to provide query values for the mandatory criteria. Mark criteria as mandatory to prevent blind queries and improve performance

### New change log options

Before 3.7 enabling the change log would create an audit for all the operations on a table causing a significant performance degradation. Starting with Compiere 3.7 we are providing the following options for the change log at the table and role levels:

- All Operations: all operations will be logged (similar to the old behavior of change log=Y)
- Updates and deletes: only updates and deletes will be logged. Inserts will not be logged
- None: no operations will be logged (similar to the old behavior of change log=N)

AD tables are logged regardless of any user or table settings

### Web UI Keyboard Shortcuts

We have updated the Web User Interface to improve data entry using keyboard shortcuts. To see a full list of available keyboard shortcuts, view the Keyboard Shortcuts section at <http://wiki.compiere.com/display/docs/Using+the+Web+UI>

### New fields in Import Order

The Import Order window and process have been enhanced to support import of Delivery Via Rule for the order header and Drop Ship for the order line. If you don't provide a value for Delivery Via Rule the order will be imported with value Pickup.

### New property ReportMaxQueryCountExceeded

The new property ReportMaxQueryCountExceeded added to Compiere.properties will allow you to restrict the maximum number of rows that reports can retrieve to prevent out of memory errors on the application server.

---

## Technical Notes

- New database certifications:
  - Oracle 11g Release 2 Patchset 1 (11.2.0.2)
  - Postgres Plus Advanced Server 8.4 SP2
- Important Notes from previous releases:
  - Compiere does not support Business View Layer Component on EnterpriseDB (Postgres Plus AS) due to some technical constraints to enforce the Compiere security model. You can get Jasper Reports to work in EnterpriseDB by setting up the Jasper reports directly against the Compiere schema, but the report developer will need to manually apply the security rules. The following reports can be used as an example to setup Jasper Reports in EDB: Trial Balance, Profit and Loss Statement, and Balance Sheet.
  - The Payflow Pro integration provided by Compiere to process payments has been updated to use the new Payflow Pro SDK and updates to the payment processor data from the bank window are required. If you continue to use outdated SDKs after January 2010 your payment processing will stop.
  - Bulk updates have been enabled for the following processes to improve performance: Orders, Invoices, Warehouse Tasks, Shipments, Receipts Processing, and the import processes for business partners, products, orders, invoices and locators
  - New table M\_StorageDetail replaced existing table M\_Storage as the container for information about product quantity. See 3.6.1 release notes for details.
  - For additional changes from previous releases see the [release notes page in the Compiere wiki](#)

## Web User Interface

In order to get properly acquainted with the Web User Interface, please read the section on “Using the Web Application” in the user documentation.

At present, there are still some known features available in the “Java Swing” User Interface that are not yet available in Web User Interface. Most of these features are scheduled for a future release.

The following features are currently **Not Available** in the Web User Interface. However, they are fully functional in the “Java Swing” User Interface:

- Resource & Schedule Info Windows – Info Window available from the ‘View’ menu to view Scheduled Resources.
- Resource Assignment – A Form used to schedule a resource accessed from the Assigned Resource field in a Sales Order, Project, or Expense Report.
- Personal lock – A security feature accessible from the toolbar used to lock a specific record to keep the record private. It is also used as a method to set security access rules for specific records.
- Archive Viewer – A window used to view the Archived Records. Records or Documents can be archived via the toolbar from the document viewer or automatically via a setting available in the tenant window.
- Ability to print mass shipments – A process available from the Main Menu used to print multiple shipments.
- Print from info windows – A button accessible from any Info window used to print a screen shot of the information.

- Ability to email documents/reports as attachment – A button available from the toolbar of any report or document that opens an e-mail dialog box with the report attached as a .pdf file allowing users to send the report via e-mail.
- Product attribute grid – A form available from the Main Menu which allows users to select an Attribute and view a grid of which products are available with the selected attributes.

**Important:** The Firefox Browser 3.5 is recommended when using Compiere with the web user interface.

When using Internet Explorer, verify the options: “Always switch to new tabs when they are created” and “A new tab in the current window” are enabled: Under Tools> Internet Options> General Tab, open the Tab settings.

## Product Enhancements for Compiere 3.7.0

Document No.	Summary
10017277	No selection column for M_ProductPrice When you open the search dialog from within the "Product Price" tab in the "Price List" window, there are no default search fields. You have to go to the advanced tab in order to search. It would be good if at least the product column was tagged as selection column.
10020549	Enhancement Request: Could the "Order Type Group" field be added to the "Shipment Management" window as a search criteria.
10020550	Enhancement request: Could the "Consolidation Reference" field be added to the Wave Planning window and Wave Planning process (2 menu items) as search criteria.
10020976	Following on from issue 10020698..  A Sales Order reserves stock based on the first default locator it finds. So if we wish this to be a dispatch locator then only one locator - the dispatch locator - can be marked as default.  Change so that Sales Order lines check the "Default Staging" locator field on a WMS warehouse and use this, and then fallback to a default locator if none set.  This will make Sales Orders consistent with Material Receipts - see SR10019957.
10022625	New change log options
10023066	Create report: BOM Component Usage Report should list all products and their BOMs where the selected BOM Component is used.
10023600	Sort record comments (business partner notes, contact notes, etc.) in reverse chronological order.
10023608	Allow query criteria in Info Windows to be marked as mandatory.
10023695	Mark regions more distinctly in the web UI. Mark the region headers bold and darken the color of the divider line.
10023883	Ability to reprint task lists in batch. They use the "Print pick list" option during wave planning, but if there are any issues in printing, they need to be able to reprint the pick lists in batch.
10023935	Progress Image is showing even though wave planning process completed.
10024067	New views required by Shop Floor Data Collection integration with Compiere.
10024610	add a tab to the blanket purchase order line and blanket sales order line tabs to show the releases created for the line.
10024623	In generate PO from Sales order allow selection of document type We should have the possibility to choose the target Document Type used for Purchase Order.
10024653	I wanted to point out something in the drop ship functionality that I think bears a review. As it stands, in order for a product to be classified as drop ship on an order the user must manually select that it is a drop ship at the time of order entry. You'll see at Online Stores and, in my experiences so far, that this isn't very realistic. Most companies have products that are always drop shipped and the order entry people don't even know which products those are. A better solution would be a Drop Ship check box on the Product screen that can be used to set that as the default for the product when sold. Even if it's not selected, a user could still manually select it at order entry but the default would take care of 99% of the products.

## Product Bugs for Compiere 3.7.0

Document No	Summary
10016839	Support for CLOBS with more than 32766 characters.
10018150	Project window - when moving from Phase tab to Phase Line tab and back to the Phase tab, the current Phase record in context is lost and a blank window is displayed. Swing UI. Happens only if there is no Phase Line record existing and you don't create one after navigation.
10018865	AD_Val_Rule SQL parsing problem - WHERE as Alias
10019928	JBoss warnings -----> Msg.getMsg: NOT found: Up [13] -----> Msg.getMsg: NOT found: SaveAdvancedSearch [13]
10020451	Web UI: Opening an info window, the OK, Cancel, Clear and Search keys have no keyboard shortcuts.
10020488	Product: The Advanced Search is not working in the Web UI
10020763	In the webUI, grid view of the data for a table, one cannot change the fields that have a "Y", 'N' entry
10021011	We find in Process Parameter the default value is not used. If the Default Value is set for the field. It is not taking that value while running the process , it is always taking the value from context only
10021189	Ctrl + N : issue with Compiere 330
10021355	In SwingUI one can define a field with reference 'long text' and this would provide a html editor. However, in webUI this same this does not show up as html
10021427	Incorrect license message for components created by partners
10021608	during a migration from 3.2.1 we get: ORA-12899: value too large for column "COMPIEREBLUEPRINT"."AD_WINDOW"."PROCESSING" (actual: 5, maximum: 1)
10022760	In swing UI its showing gray color for inactive records but in WEB UI it is not showing the gray color.
10022794	On a sales order, I've 71 lines. I want to export all these lines in an Excel file. When I choose "Export all records (ctrl+e), I received the total database, not only the current order. When I tick "Select all", then Actions, export selected records, I received only the first 20 records.
10023004	Able to delete records in line level using Delete records option in Actions drop down with read only permissions on window.
10023359	m_trx in MWFActivity is allways null.
10023409	Issue with invoice tax when parent child tax rates are used.
10023461	Installation warning 2010-08-27_2.log-----> CPreparedStatement.finalize: Connection not properly closed; closing now; was borrowed from: [33] 2010-08-27_2.log-java.lang.Throwable 2010-08-27_2.log: at org.compiere.util.CPreparedStatement.<init>(CPreparedStatement.java:89) 2010-08-27_2.log: at org.compiere.util.DB.prepareStatement(DB.java:512) 2010-08-27_2.log: at org.compiere.eul.model.MEULUser.beforeSave(MEULUser.java:108)
10023468	Can't select a file that doesn't exist for process parameter.
10023473	Switching Role Web Interfase does not clear #M_Warehouse_ID
10023474	Our customer needs to be able to create Invoices when not logged in to a specific organisation. So they log in to Organisation *. When you do this, you don't have a #M_Warehouse_ID in your context. This is a problem when you select a Charge on the

	invoiceline: setting the C_Tax_ID goes wrong. In the Swing UI you dont get a message but in the web UI a "Tax Error" message pops up.
10023477	Issue: System increases the ordered quantity at wrong Locator when voiding the material receipt.
10023521	After implementing User2_ID, there is not possible to creste or display valid combination in web ui. (it works fine in java).. There is a bug in sql being generated. Logs reports that: java.sql.SQLException: ORA-00918: columna definida de forma ambigua ; State=42000; ErrorCode=918
10023522	Error when using Compiere with another system language (e.g. Spanish): Open My Reports, click on Edit for any report. Columns are not displayed and the Compiere log has the following error: =====> PrintFormatViewHelper.convertPrintFormat: null [41] java.sql.SQLException: ORA-00936: missing expression ; State=42000; ErrorCode=936 ... at org.compiere.util.CPreparedStatement.executeQuery(CPreparedStatement.java:156) at org.compiere.gwt.server.viewhelper.PrintFormatViewHelper.convertPrintFormat(PrintFormatViewHelper.java:115) at org.compiere.gwt.server.ReportServiceImpl.getPrintFormatDetails(ReportServiceImpl.java:1682)
10023525	Follow up on SR# 10019315 : issues printing Lithuanian characters in pdf
10023528	Request 10023416: When generating a PO from a Requisition using the Create PO from Requisition, the Required Date from the requisition is not being used on the PO. It appears all dates on the PO are defaulted to Today's date.
10023539	Unable to cut a check for Credit Memo - not available in 'Payment Selection (manual)' and negative amount if Payment Selection is manually created.
10023556	BUG: Editing text fields in grid mode. See attached screen shot. There is a strange white box that comes up when you try to edit a text field in grid mode. This has been tested on Window and Linux using Firefox.
10023575	In MInvoiceLine.afterSave, updateHeaderTax is called. In updateHeaderTax, there are two SQL calls to update the invoice TotalLines and GrandTotal of the invoice header. if the first SQL fails but the second one succeeds, then the method will return true (no ==1), which is not correct behavior because the first SQL failed.
10023583	I can't find where to translate words: Parameter(s) and Print Format (Layout) in reports. These 2 labels appear when running a report.
10023606	Improve performance by reducing the number of deletes from AD_RecentItem. Every time a user opens a record for editing or saves or deletes it, the Recent Items list is updated. There are a number of delete statements executed to delete the recent item that was accessed the earliest. Group the deletes and perform them fewer times to improve performance.
10023612	Do not track Change Log for temporary table T_Aging. This table is only used to keep temporary data used for the Aging report. There is no business need to track changes in this table.
10023617	Set Trace Level to Fine, or anything below that (Finer, Finest or All) - Open the Customer RMA window - Select Target Doc Type (Customer RMA) - Select a Business Partner (Joe Block) - Click Orig Sales Order Drop Down  Nothing happens now and a Stack overflow is displayed in the console log.
10023621	Improve performance of Business Partner Location and Contact queries, especially if the number of locations and contacts per partner are high.

<b>10023642</b>	<p>Many of our users are getting errors. Here is what is in the log. The ref# increments with each occurrence of the error.</p> <pre> =====&gt; CRemoteServiceServlet.doUnexpectedFailure: Ref#73 java.lang.NumberFormatException: Expected type 'int' but received an out-of-range value: 2149000001 at com.google.gwt.user.server.rpc.impl.ServerSerializationStreamReader.getNumberFormat Exception(ServerSerializationStreamReader.java:8 </pre>
<b>10023646</b>	In Aging report, if you provide parameters for both Business Partner and Business Partner Group, you get an error.
<b>10023652</b>	We are getting an error "Negative inventory on hand" even when there is enough inventory. I am including details on how to reproduce this error in the comments below.
<b>10023683</b>	Deadlock occurred on m_storagedetail.
<b>10023705</b>	<p>1) created an AP invoice. This invoice is matched to a material receipt. there is record added to the M_MatchInv and Matched Invoices screen representing the matching. Accounting postings are generated when match record is posted.</p> <p>2) Void the AP invoice.</p> <p>3) The Matched Invoices record is NOT voided or deleted. The Accounting postings are not reversed which causes issues with Product Clearing account.</p> <p>4) The same material receipt line can be matched again to the new invoice created.</p> <p>Compiere does not void the matched invoice records automatically and does not provide us with a way to void them after they are processed.</p>
<b>10023736</b>	<p>Error in the Compiere server log when opening the window help:</p> <pre> -----&gt; CPreparedStatement.finalize: Connection not properly closed; closing now; was borrowed from: [16] java.lang.Throwable     at org.compiere.util.CPreparedStatement.&lt;init&gt;(CPreparedStatement.java:89)     at org.compiere.util.DB.prepareStatement(DB.java:512)     at org.compiere.util.DB.prepareStatement(DB.java:478)     at org.compiere.gwt.servlet.ShowHelpServlet.printWindowHelp(ShowHelpServlet.java:509)     at org.compiere.gwt.servlet.ShowHelpServlet.doGet(ShowHelpServlet.java:93) </pre> <p>No errors in the GUI, only server log.</p>
<b>10023766</b>	This request it related to request 10023652: issue of different movementQty on ShipmentLine.
<b>10023802</b>	Performance issue on not binded sql requests when using a large number of organisations
<b>10023805</b>	Multiple warehouse task created on hitting process button twice.
<b>10023816</b>	<p>The same product on more than one order line causes "Negative Inventory Disallowed for Warehouse" when you try to complete shipment.</p> <p>Steps to reproduce:</p> <ol style="list-style-type: none"> <li>1. Enter an order with two lines, put a qty of 1 for the same product on each line.</li> <li>2. Process the order thru wave planning using order pick and doc action complete. Pick tasks are generated for each line and a shipment is created with two lines.</li> <li>3. Complete the shipment. Error occurs here.</li> </ol>
<b>10023819</b>	<p>Grid View editing</p> <p>Order Type Group Window (WMS)- The first letter typed in the 'Name' field always gets overridden by the second letter typed in .</p>
<b>10023838</b>	<p>It takes a long time to get the "View &gt; Account Info" window and getting postings via posted button.</p> <p>All the rows from Fact_Acct are fetched on the apps server side even before the info window is displayed</p>

<b>10023942</b>	server log error: java.lang.IndexOutOfBoundsException: Index: 0, Size: 0 at java.util.ArrayList.RangeCheck(ArrayList.java:547) at java.util.ArrayList.set(ArrayList.java:337) at org.compiere.esb.GwtServer.refreshRow(GwtServer.java:980)
<b>10023967</b>	When selecting a Payment in Bank Statement line lookup, it is including the reversed payments that are created when an existing payment is voided or reversed. These should not be included
<b>10024007</b>	We have a custom table that is updated by a custom process. When the process is executed, there are several columns that are updated with numeric calculations using the set[ColumnName] method of the generated X_[TableName] class. These columns were updated correctly in version 3.4.1. In version 3.6.2 these columns are not updated. There are no errors/warnings in the log. All of these columns are defined with Reference "Quantity" data type.
<b>10024014</b>	When a previously closed order is reopened, and that order had a backorder, the reserved qty and lost sales is not properly updated. The ordered qty is correctly updated to the original order qty The difference between the ordered qty and shipped amount should be reserved. this was also replicated in 3.7
<b>10024017</b>	If you are getting a 'Terminated' message there should be errors in the log.
<b>10024030</b>	In M_Locator, both the Locator and LocatorCombination columns have System Elements with name Locator. Since webservice parameters are based on the user friendly column name, this makes it impossible to distinguish between the 2 columns for the purposes of passing in web service parameters.
<b>10024089</b>	Number of order lines processed by Wave Planning is less than the number specified by the user.
<b>10024147</b>	Web UI Timeout The call failed on the server; see server log (Ref#1) for details. java.net.SocketTimeoutException: Read timed out at java.net.SocketInputStream.socketRead0(Native Method) at java.net.SocketInputStream.read(SocketInputStream.java:129) at org.apache.coyote.http11.InternalInputBuffer.fill(InternalInputBuffer.java:71)
<b>10024158</b>	add an order to a shipment I'll get a java.lang.StackOverflowError: Exception in thread "AWT-EventQueue-0" java.lang.StackOverflowError at javax.swing.JLabel.paramString(JLabel.java:919)
<b>10024200</b>	Changes to tables with a column "EntityType" (e.g. windows, tables, dashboards, etc.) should always be logged
<b>10024220</b>	If an order has a delivery rule of Complete Order and in wave planning you override the rule to be availability the available lines will be processed. later when the out of stock items are now available tasks will not be created in wave planning unless of override the delivery rule to availability
<b>10024270</b>	Null pointer exception =====> ModelValidationEngine.fireDocValidate: propertyName:C_Order1000000 [13] java.lang.NullPointerException at org.compiere.framework.ModelValidationEngine.fireDocValidate(ModelValidationEngine.java:331) at org.compiere.model.MOrder.prepareIt(MOrder.java:2401) at org.compiere.process.DocumentEngine.prepareIt(DocumentEngine.java:352)
<b>10024285</b>	If more than one table has the same user friendly name, it is not possible to retrieve data using web services. e.g. M_Operation and M_WorkOrderOperation both have the same name Operation. Logged on behalf of Jeff Gottschalk.
<b>10024287</b>	Changelog data older than a week is deleted automatically
<b>10024297</b>	When you have a column defined as following: - Reference "Table Direct" - Mandatory

	<p>- Don't select Mandatory UI</p> <p>In Swing you can select an empty value from the list but in GWT there is no empty value to select.</p>
<b>10024300</b>	<p>The first GWT session after the Compiere service has started logs a lot of missing messages:</p> <pre>-----&gt; Msg.getMsg: NOT found: Up -----&gt; Msg.getMsg: NOT found: Up -----&gt; Msg.getMsg: NOT found: Down</pre>
<b>10024301</b>	<p>If any link of a payment batch is voided or reversed the Paid flag on invoices is not updated  This includes - void/reverse of an invoice in a payment batch, a payment or a payment allocation.  Also, reset allocation clears the allocation and sets the allocated flag correctly but not the paid flag on the invoices.  As a note, running Business Partner Update does correct the paid flag on the invoices</p>
<b>10024307</b>	<p>In GWT when you go to the window Scheduler (in System Admin / General Rules / Server) than you get the next message in the log:</p> <pre>=====&gt; MLookup.getDirect: AD_User.AD_User_ID: Not unique (first returned) for 101 SQL=SELECT AD_User.AD_User_ID,NULL,AD_User.Name,AD_User.IsActive FROM AD_User WHERE AD_User.Name IS NOT NULL AND (AD_User.AD_Client_ID=0 AND AD_User.AD_User_ID=0) OR EXISTS (SELECT * FROM C_BPartner bp WHERE AD_User.C_BPartner_ID=bp.C_BPartner_ID AND (bp.IsEmployee='Y' OR bp.IsSalesRep='Y')) AND AD_User.AD_User_ID=? [19]</pre> <p>We found out that this is the result of the reference "AD_User - Supervisor" which returns more than one rows.</p>
<b>10024327</b>	<p>Revisiting bug 10024031.</p> <p>If you provide an element with an Info tag, there is a bug in Compiere code that doesn't allow subsequent elements to be parsed correctly if they do not have an Info or Value tag.</p> <p>In the snippet:</p> <pre>&lt;C_DocType_ID&gt; &lt;Info&gt;Work Order Transaction&lt;/Info&gt; &lt;/C_DocType_ID&gt; &lt;C_UOM_ID&gt;100&lt;/C_UOM_ID&gt;</pre> <p>C_UOM_ID will be parsed as having a null value.</p> <p>As mentioned in my update in bug 10024031, variable elementTagsAllowed is not initialized correctly.</p>
<b>10024330</b>	<p>Bug in org.compiere.wf.MWFActivity</p> <ul style="list-style-type: none"> <li>- Edit the workflow Invoice.</li> <li>- Add a new User Choice Node to this workflow.</li> <li>- Create a Transition from DocPrepare to the new node with sequence 10.</li> <li>- Create a Transition from the new node to DocComplete.</li> <li>- Create an Invoice and add a Priselist with a Currency where no Conversion Rate is defined.</li> <li>- Complete the Invoice.</li> <li>- Choose Yes for the workflow question</li> <li>- See the Stack Trace</li> </ul>
<b>10024342</b>	<p>You cannot update the Min or Max stocking Qty for a locator, if the locator was previously saved without a value in those fields. If you are creating a new locator, you can enter and save the values. This occurs in swing and web. In the web, the values are retained when you click save. However, when you query the records, the values are re-set to null</p>
<b>10024346</b>	<p>M_AttributeSet_ID on M_InOut_Line_v</p> <p>When M_AttributeSet_ID is added as field to an embedded print format Ship/Receipt Line, ***Do Not Change/Use*** is printed on a shipment / receipt document when a product has no attribute set instance on M_InOut_Line.</p>

<b>10024394</b>	<p>A dunning run does not create records if one BP does not have a location which has the Pay From check box selected.  To replicate  In GW Open Dunning Run, select Statement for Dunning level and click Create Dunning Run  Note: 2 records created one for Joe Block and one for C&amp;W  Now Go to the two locations defined for Joe and de-select the Pay from check box  Create Dunning Run and no records created and no message generated.  Expected a results, The system should create the dunning records that it has a Pay from location for and display to the user the dunning records it could not create and the reason.  Note: in 3.7 this cannot be tested until 10024393 is fixed.</p>
<b>10024399</b>	<p>Tax declaration does not take into account, the organization .  We want to prepare the tax-statement for each individual organization within the organization-structure.  Step 1. Create tax-declaration (transaction tax-declaration) where we specify a specific organization (not *).  Step 2. Button: create tax declaration  After step 2. The tax-declaration-lines also include tax-lines for other organizations than the one we've specified at step 1.   We expect that only the tax-lines for the specified organization are listed at the tax-lines.</p>
<b>10024402</b>	<p>Delete button Matched Purchase Orders   Unable to delete M_MatchPO records with delete button.  Error:  -----&gt; PO.delete: beforeDelete [13]  java.lang.NullPointerException  at org.compiere.model.MPeriod.isOpen(MPeriod.java:239)  at org.compiere.model.MMatchPO.beforeDelete(MMatchPO.java:721)  at org.compiere.framework.PO.delete(PO.java:3407)</p>
<b>10024403</b>	<p>Delete button Matched Invoices   Unable to delete M_MatchInv records with delete button.  Error:  -----&gt; PO.delete: beforeDelete [15]  java.lang.NullPointerException  at org.compiere.model.MPeriod.isOpen(MPeriod.java:239)  at org.compiere.model.MMatchInv.beforeDelete(MMatchInv.java:367)  at org.compiere.framework.PO.delete(PO.java:3407)  at org.compiere.process.MatchInvDelete.dolt(MatchInvDelete.java:55)</p>
<b>10024432</b>	<p>If data contains foreign UTF-8 characters web services fail to retrieve data.  Exception in thread "main" javax.xml.bind.UnmarshalException  - with linked exception:  [org.xml.sax.SAXParseException: Invalid byte 2 of 2-byte UTF-8 sequence.]  at  javax.xml.bind.helpers.AbstractUnmarshallerImpl.createUnmarshallerException(AbstractUnmarshallerImpl.java:315)  Caused by: org.xml.sax.SAXParseException: Invalid byte 2 of 2-byte UTF-8 sequence.  at org.apache.xerces.util.ErrorHandlerWrapper.createSAXParseException(Unknown Source)</p>
<b>10024445</b>	<p>Edition of a single document generate a loop dependent on the search result list</p>
<b>10024465</b>	<p>When you are trying to arrange nodes into folders in the tree maintenance window and there are lots of folders and items in the specific tree (enough for the scroll bar to appear, 'OtterBox? Warehouse Supervisor Menu' for example):  If you try to move an item down to a folder (so you scroll the window down), then go past the folder you wanted to drop the item into, once you move back up to try to put it in, it will jump to the top of the list again</p>

<b>10024484</b>	Reserved inventory is not cleared when an order is closed, if the product is no longer on a price list. Create a standard order for 1 rose bush and 1 Hosta for HQ warehouse Generate shipment for the rose bush (Hosta is not in stock) delete Hosta from the Sales price list Close the sales order (this should remove the backorder) Reserved qty still shows as 1 on sales order and in HQ warehouse for Hosta Available shows as -1 and reserved as 1. No message is displayed to the user but the following is in the log
<b>10024490</b>	For importing Standard Order with 20k lines its taking 17 to 18 minutes to import.
<b>10024529</b>	Web UI does not show correct message for when max query records is set at role level
<b>10024537</b>	Posting fails due to rounding issue
<b>10024546</b>	Need to show timestamp in log for all log levels
<b>10024558</b>	Wrong ship to location used on PO line with drop ship.
<b>10024559</b>	Add Qty Invoiced to the Blanket Sales order line and Blanket PO lines to be updated when an invoice is generated/voided
<b>10024561</b>	Unnecessary warning when Document Type Sequence is not used : MSequence.getDocumentNo: No Sequence for DocType - MDocType[1000070-Material Pick,DocNoSequence_ID=0] [99]  It is very common for customers to not use document sequences, and this is generating thousands of warnings in the log file, making it hard to find real issues.
<b>10024562</b>	Add IsDropShip to views to enable reporting on this column
<b>10024564</b>	Error installing Compierre on PPAS 9.0 beta3 (EnterpriseDB) 2011-05-11 16:12:45.510 CommandLineInstall.a: /home/compierre/Compierre2/CompierreEnv.properties 2011-05-11 16:12:46.026 =====> CommandLineInstall.a: Backend start-up failed: FATAL: database "mgmtsvr" does not exist.: [Ljava.lang.StackTraceElement;@bd86fd3 2011-05-11 16:12:47.586 =====> CommandLineInstall.a: Can't connect to database compierre(jdbc:edb://edb9.local:5444/mgmtsvr) 2011-05-11 16:12:47.587 =====> CommandLineInstall.d: Error occurred while getting the Compierre DB Info  RUN_SETUP error: 2011-06-01 15:41:25.160 =====> ProgressPanel.publish: com.edb.util.PSQLException: Backend start-up failed: FATAL: database "mgmtsvr" d oes not exist. [15]
<b>10024585</b>	able to create a purchase order for a drop shipped sales order line that is marked complete and completely delivered. Screen shots were emailed to Kathy. 1) create a drop shipment sales order 2) run generate purchase order from sales order and select the sales order just entered 3) receive the purchase order using Material Receipt (as documented for Drop Shipments) 4) create the AP invoice 5) create the AR Invoice 6) review the SO, delivered quantity is non-zero 6) Run Generate purchase order from sales order and select the single sales order --> a new purchase order is created
<b>10024597</b>	When voiding a manually released purchase order, the Qty Released on the order tab screen of the Blanket PO does not show the correct qty released
<b>10024624</b>	Material Receipt - make error message clearer
<b>10024631</b>	About Consigned Inventory, why it is disabled "Create Confirmation" on Material Receipt of consigned inventory? I understand that the Buyer do not own yet the products (that's normal), but, as any other receipt in my warehouse, the storeman (storekeeper, warehouseman) do not have to count and confirm the reception?
<b>10024649</b>	New property "ReportMaxQueryCountExceeded" can be used to configure the maximum number of rows retrieved by reports
<b>10024674</b>	It is not possible to Complete documents using web services.  To reproduce, make a web service call to Update a sales order to Complete status. e.g. data/webservices/xml/StdOrderUpdateComplete.xml.
<b>10024698</b>	Improve Consigned order information in Product Info.
<b>10024704</b>	Improve Consigned order information in Product Info.

## Known Issues in the Migration Process

Warnings and Error Messages you may see during the Migration steps.

Migration Issues – Warning/Error Messages	Database	Comments
ORA-00001: unique constraint... violated	All	This might indicate referential issues in your pre-migration data. Review the problem data.
ORA-01408: such column list already indexed	All	This is an acceptable warning message.
ORA-01440: column to be modified must be empty to decrease precision or scale	All	This is an acceptable warning message.
ORA-02296: cannot enable constraint	All	This might indicate referential issues in your pre-migration data. Review the problem data...
ORA-02275: such a referential constraint already exists in the table	All	This might indicate referential issues in your pre-migration data. Review the problem data. This is an acceptable warning when upgrading CBIZ and getting errors for the tables AD_Dashboard*
ALTER TABLE S_ResourceType MODIFY ChargeableQty NUMBER(10) DEFAULT NULL Failed sql statements ERROR: cannot alter type of a column used by a view or rule Detail: rule _RETURN on view rv_asset_delivery depends on column "lot" - ALTER TABLE A_Asset_Delivery ALTER Lot TYPE VARCHAR(255) , ALTER Lot SET DEFAULT NULL No Key & No Parent - Table AD_RecentItem	EnterpriseDB	This is an acceptable warning message.
While executing RUN_Setup, refreshing an existing instance =====> DB_PostgreSQL.getDataSource: DB_EnterpriseDB[null] [12] java.lang.IllegalArgumentException: DataSource with name 'CompiereDS' already exists!	All	This is an acceptable warning message
While executing RUN_Setup -----> ModelValidationEngine.addClasses: GardenWorld: compiere.model.MyValidator - java.lang.ClassNotFoundException: compiere.model.MyValidator [12] -----> ModelValidationEngine.addClasses: Extended Units of Measure: org.compiere.xuom.XUOMModelValidator - java.lang.ClassNotFoundException: org.compiere.xuom.XUOMModelValidator [12]	EnterpriseDB	This is an acceptable warning message
ORA-01452: cannot CREATE UNIQUE INDEX; duplicate keys found - CREATE UNIQUE INDEX AD_PrintformatItem_Unique ON AD_PrintFormatItem (AD_PrintFormat_ID,Name)	All	Migration of additional components (.car) with print format items won't work as expected.

## Known Issues in the Install Process

Warnings and Error Messages you may see during the Import steps.

Install Issues – Warning/Error Messages	Database	Comments
-----> g.a: DROP SEQUENCE T_Spool_Seq -----> g.a: ORA-02289: sequence does not exist	All	This is an acceptable warning message.
-----> DB_PostgreSQL.convertStatement: Convert error! Converted statement	EnterpriseDB	This is an acceptable

Install Issues – Warning/Error Messages	Database	Comments
Number=2 (CREATE OR REPLACE VIEW ... -----> DB.saveError: DBExecuteError - ORA-00001: unique constraint (COMPIERE.C_REGION_NAME) violated [15] -----> MRegion.saveNewInsertSQL: Not inserted - C_Region [15] -----> ProgressPanel.publish: Unable to import Region, requires UNICODE database [15] =====> DB.executeUpdate: INSERT INTO C_Region (AD_Client_ID,AD_Org_ID,C_Country_ID,C_Region_ID,Created,CreatedBy,Description,Is Active,IsDefault,Name,Updated,UpdatedBy) VALUES (0,0,216,438,TO_DATE('2006-02-23 15:43:34','YYYY-MM-DD HH24:MI:SS'),0,'???(Miyasaki)', 'Y','N','???',TO_DATE('2006-02- 23 15:43:34','YYYY-MM-DD HH24:MI:SS'),0) [null] [15] java.sql.SQLException: ORA-00001: unique constraint (COMPIERE263.C_REGION_NAME) violated; State=23000; ErrorCode=1 at oracle.jdbc.driver.DatabaseError.throwSQLException(DatabaseError.java:125) at oracle.jdbc.driver.T4CTTloer.processError(T4CTTloer.java:305) at oracle.jdbc.driver.T4CTTloer.processError(T4CTTloer.java:272)	All	warning message. These are acceptable if your database is not set for Unicode (UTF8).
At the very end of the install process or when manually executing utils/RUN_Support 13:07:55.094 Compiere.startup: Client lap-fr/10.104.139.177: C:\Compiere2 - Java HotSpot(TM) Client VM 1.5.0_11-b03 - Windows XP 5 .1 Service Pack 2 [15] Exception in thread "AWT-EventQueue-0" java.lang.NullPointerException at javax.swing.plaf.basic.BasicScrollBarUI.layoutHScrollbar(BasicScrollBarUI.java:676)	All	No effect on the functionality. You may ignore this error.
Error after clicking Save on the RUN_Setup window =====> CConnection.createConnection: jdbc:oracle:thin:@//lap-fr:1521/xe, (1) AutoCommit=true,TrxIso=READ_COMMITTED - ORA-010 17: invalid username/password; logon denied [12] -----> CPreparedStatement.<init>: ALTER TABLE AD_System MODIFY Summary NVARCHAR2(2000) [12] java.lang.UnsupportedOperationException: No DBConnection at org.compiere.util.DB.getConnectionRW(DB.java:228)	All	No effect on the functionality. You may ignore this error
Error installing the sample application extension XUOM Failed sql statements: ORA-00955: name is already used by an existing object - CREATE INDEX M_Product_ProductCategory ON M_Product (M_Product_Category_ID) - java.sql.SQLException: ORA-00955: name is already used by an existing object	All	This is an acceptable warning message
Error installing the sample application extension XUOM Create Views ***** Starting to create views for entity: XUOM Created view #1 for entity: XUOM Failed sql statements <<ERROR: ERROR: relation "m_product_expensetype" already exists - CREATE UNIQUE INDEX M_Product_ExpenseType ON M_Product (S_ExpenseType_ID) - java.sql.SQLException: ERROR: relation "m_product_expensetype" already exists>> ... same error for other indexes... <<ERROR: ERROR: constraint "fk208_10919" for relation "m_product" already exists - ALTER TABLE M_Product ADD CONSTRAINT FK208_10919 FOREIGN KEY (C_SubscriptionType_ID) REFERENCES C_SubscriptionType (C_SubscriptionType_ID) - java.sql.SQLException: ERROR: constraint "fk208_10919" for relation "m_product" already exists>> ...same error for other constraints...	All	This is an acceptable warning message

## Known Issues in Compiere 3.7.0

Issues you may encounter using Compiere 3.7.0

Issue	Database	Solution
Null pointer exception when creating CAR file in Web UI		Use Swing.
Web UI: Description is not available in workflow editor. Process requisition workflow. You should be able to see the description (ex: {10: Total Lines >100})		
Web UI: When any of the Workflow Review (i.e. Initial Tenant Setup Review) windows are displayed and then the menu tree is expanded over the workflow review, the icons for the		

Issue	Database	Solution
steps in the workflow overwrite the menu options.		
Web UI: There is no button Panel at the bottom of the page for workflow Navigation in workflow editor window.		
Error when executing BVL reports on EnterpriseDB JasperReportServer.startReport: BVL Schema does not exist	EnterpriseDB	BVL is currently not supported on EDB

For a current list of open issues please query the list of public requests from our request system <http://www.compiere.com/support/support-requests.php>.

---

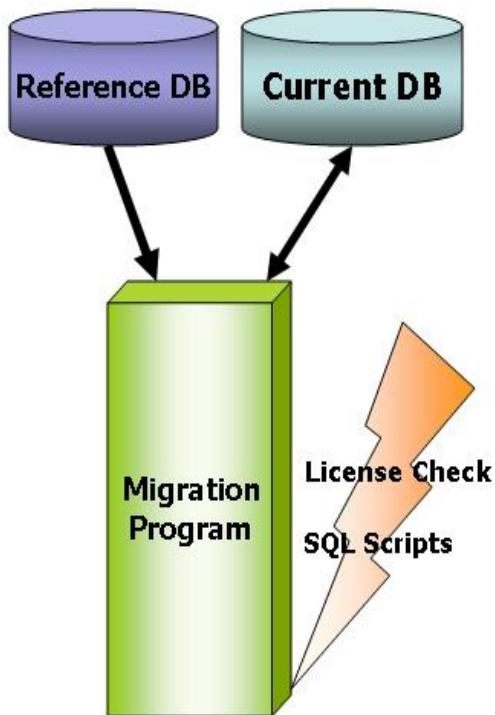
**Appendix A**  
Migration Instructions

## Compiere 3.7.0 Migration Instructions

These instructions are for upgrading an existing installation of Compiere. If you are doing a new installation please refer to the installation instructions on appendix B.

### Prerequisites

- A valid Support contract
- Sun Java JDK 6 (SDK) – Update 5 or later (not just JRE)
- Database Oracle XE, Oracle 10gR2, Oracle 11gR2 or EnterpriseDB Postgres Plus Advanced Server 8.3 and 8.4SP2.



### Preserving Customizations

Compiere will not modify any customizations - as long as the customizations are marked appropriately. By default, all added records in the dictionary will have the entity type "User Maintained":



For changes to existing dictionary records, in the Change Audit window mark as 'Customizations' the changes that you need to preserve before running the migration.

Before performing the migration, run it in the test mode to ensure all customizations will be preserved.

### Migration Steps

---

Migration Consists of the Following steps:

- Preparation
- Test Mode (optional)
- Migrate to a New Release
- Post Migration Steps

## Preparation

Use the following steps to prepare for the Migration:

- Server needs to have access to the Internet for http (port 80) and https (port 443).
- Stop the application server by executing `utils/RUN_Server2Stop`
- Backup the database
- If you are running EnterpriseDB 8.2 or older you must upgrade to EnterpriseDB Postgres Plus Advanced Server 8.3

## Test Mode (optional)

As an optional step you may want to run migration in test mode. This allows the ability to evaluate the actions taken when running it against the database. Please note that the first step (resolve ID conflicts) will not show the correct future IDs in test mode. It is expected to get errors in test mode as the database changes are not being executed, but this is a useful tool to evaluate the schema changes that are about to be done.

Follow the `RUN_setup` steps for a regular migration from the following section, but on step 19 leave the 'Test Only' checkbox marked.

If the program marks certain wanted tables for deletion, then create the table in the data dictionary (Window Table/Column) with the Entity Type *User Defined* or your own entity type.

If the program marks certain wanted columns for deletion, make sure that the column has the Entity Type *User* or *Application*. If the wanted column has the Entity Type Data Dictionary or *Compiere* and it is marked for deletion, then copy it under another name and mark the new column as *Custom* or *Application*. The same applies to windows, tabs, fields, etc.

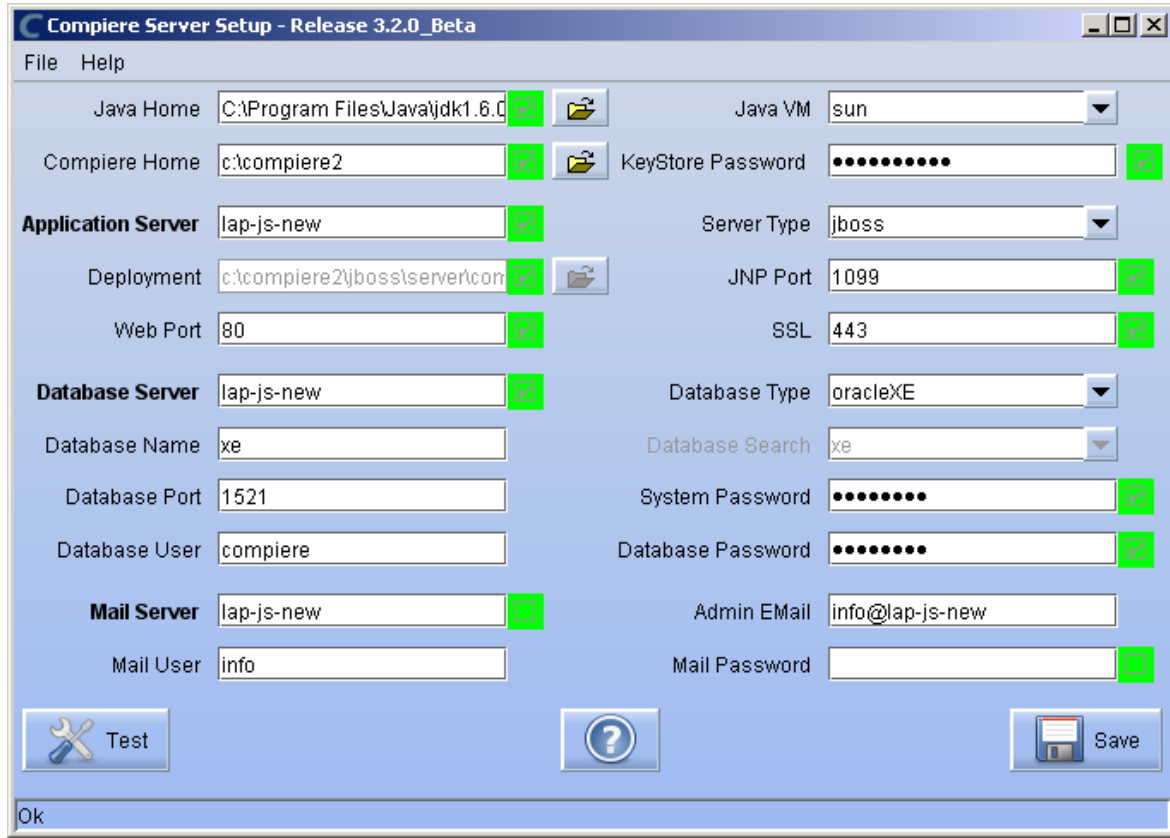
Mandatory User or Application Columns must have a default value defined in the database, e.g. `ALTER TABLE someTable MODIFY (myColumn DEFAULT 'myDefault')`, otherwise adding new records will result in an error.

## Migrate to a New Release

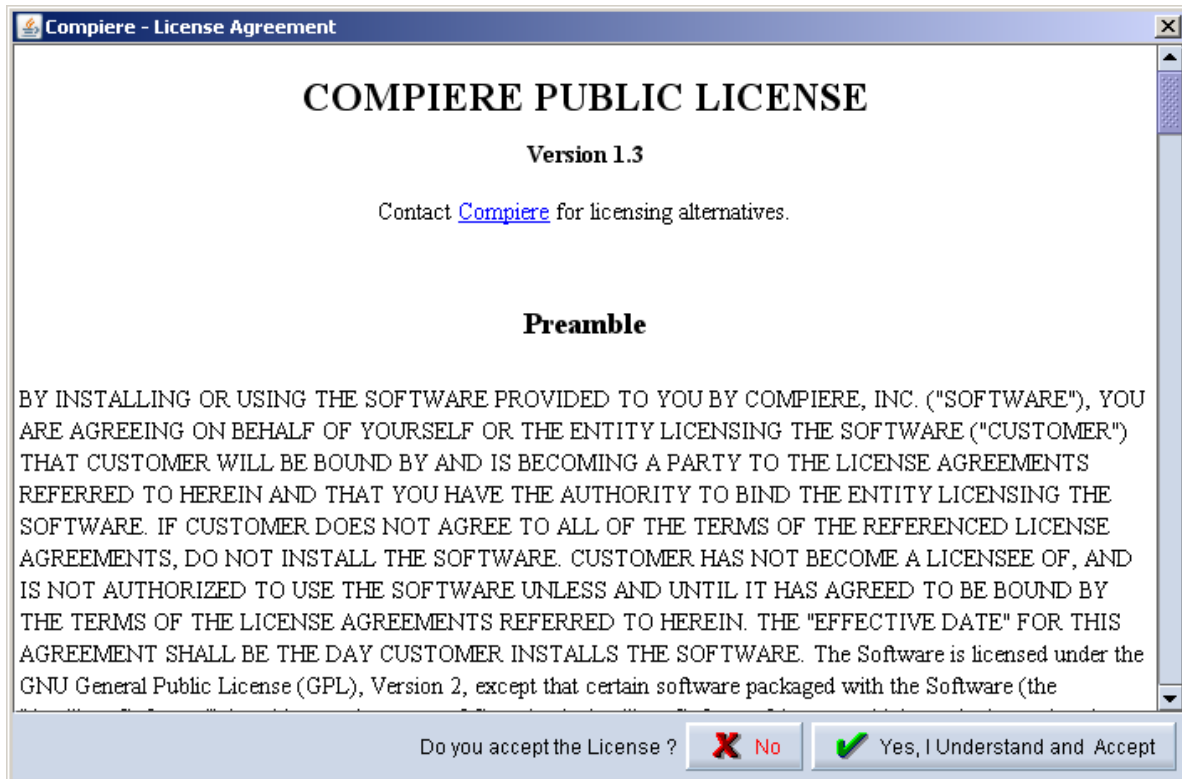
Use the following steps on the Application Server box for migrating to the new release:

- 1) If upgrading from 3.2.1 or older you must rename the existing `Compiere2/jboss` folder to uptake the new JBoss version
- 2) If upgrading from 3.0.x you must delete all the `.car` files from `Compiere2/data/`
- 3) Download and unzip/untar the distribution file, (e.g. `Compiere_3XX.X.zip`) making sure to overwrite any existing files
- 4) Execute **RUN\_setup**. Verify all your environment settings and click Save to continue. If you get any errors in the parameters validation, you'll see a red icon right next to the parameter with the problem; make the required changes, click Test to run the validation again and then click Save to continue.

Note: The screen shots show version 3.2.0\_Beta but these also apply for 3.7.



- 5) The Compiere Public License Opens. Click "Yes, I Understand and Accept" to continue.

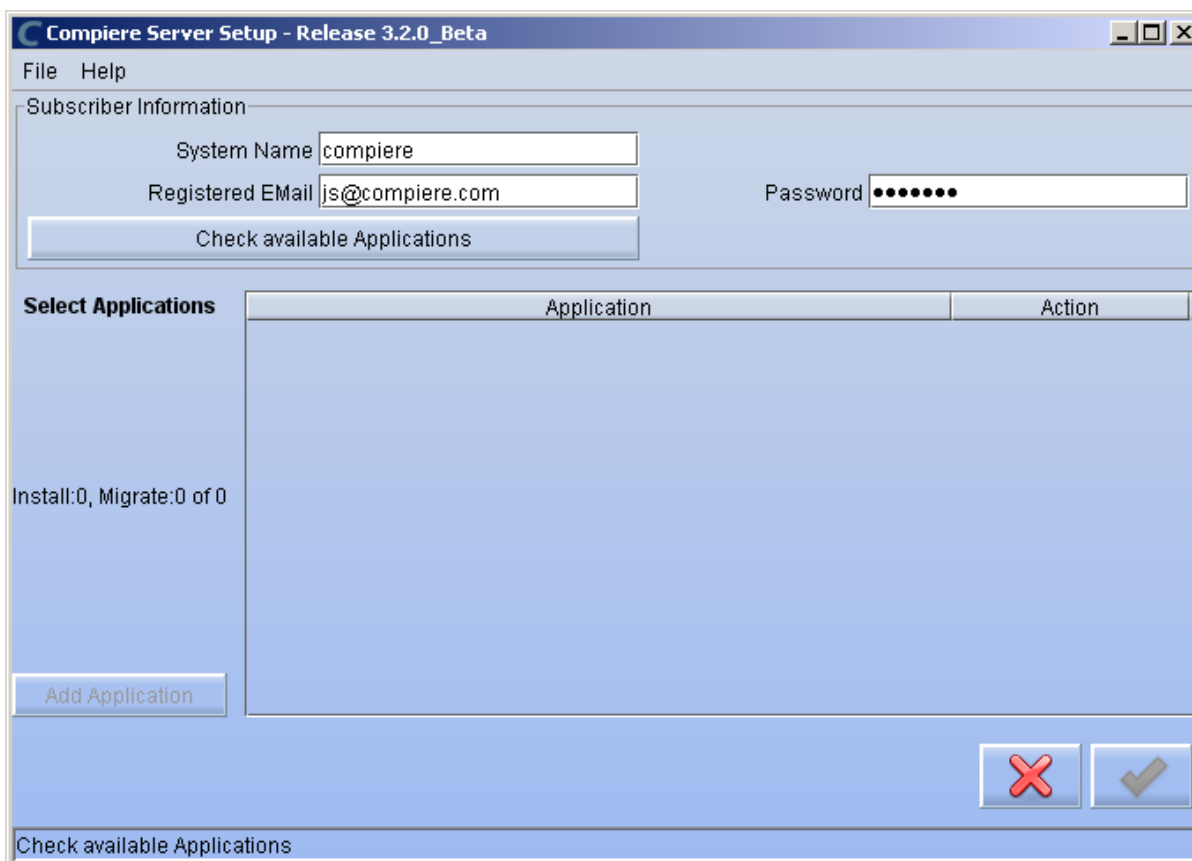


- 6) If you haven't set a security key file the following prompt will display. Click 'OK' to continue.



- 7) The Next step is to provide the Subscriber Information. Current customers should provide the subscriber information (System Name, Email and Password) exactly as it was registered in the Compiere Web Store to get a complete list of applications.

Click Check Available Applications to get a list of applications that are available to be installed.

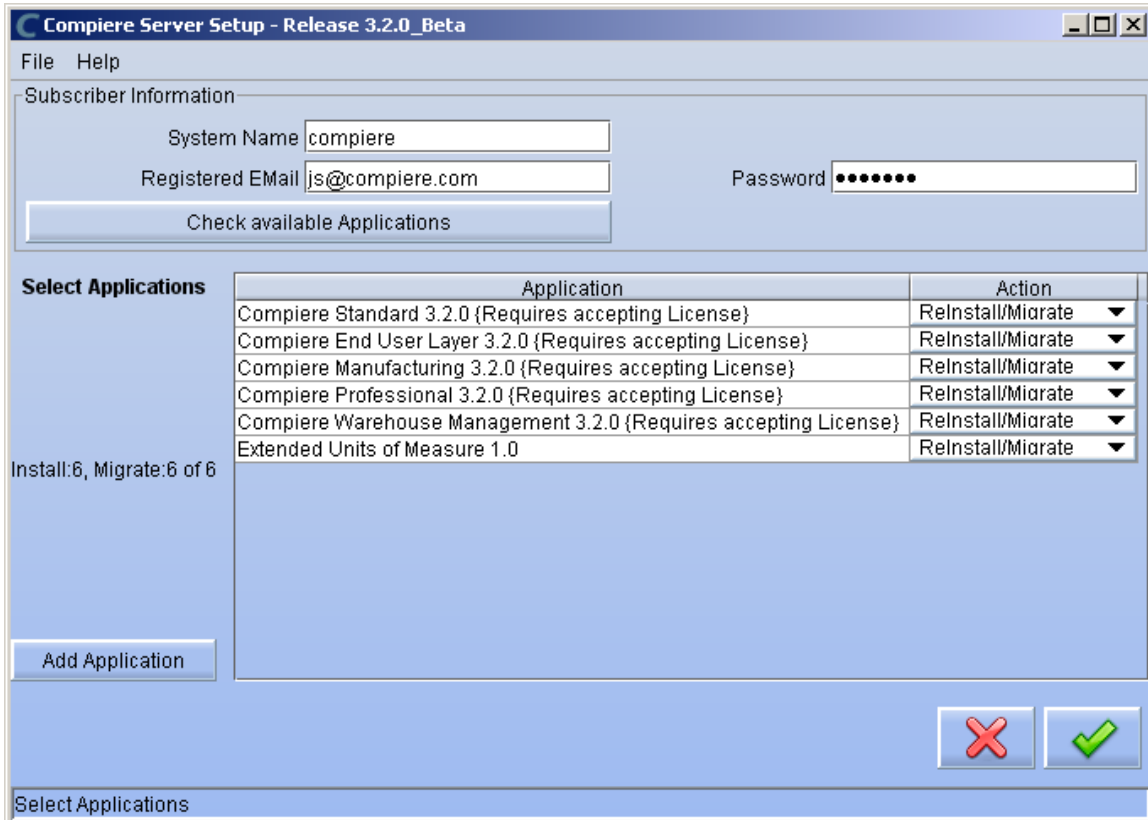


**Note:** To install additional applications once you have installed or migrated to the latest Compiere Core version, you must select Compiere Core plus any additional applications to install, and then run Migration.

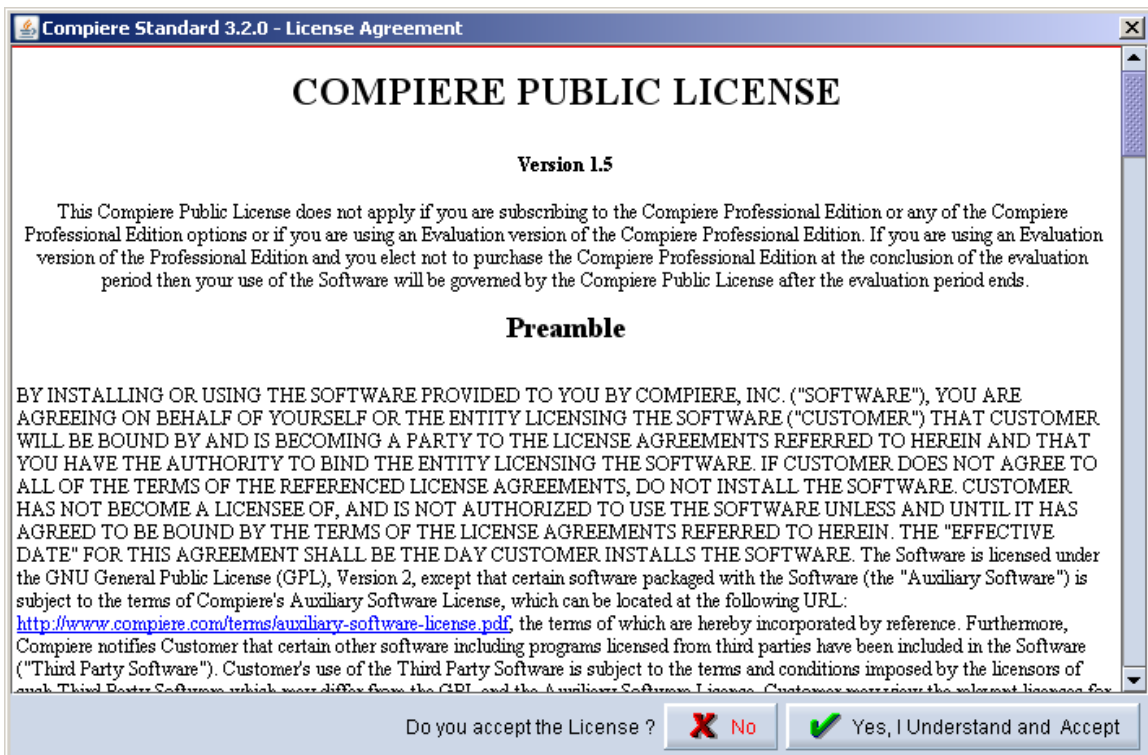
- 8) Select the applications that you want to migrate and select the action **Reinstall/Migrate**. Compiere Standard is the core application that must always be installed or migrated to the latest release, but you also may choose additional applications provided by Compiere or any of our authorized partners.

If you do not wish to install or migrate any of the applications listed, be sure to change the action to –None- To install new applications change the action to New Install

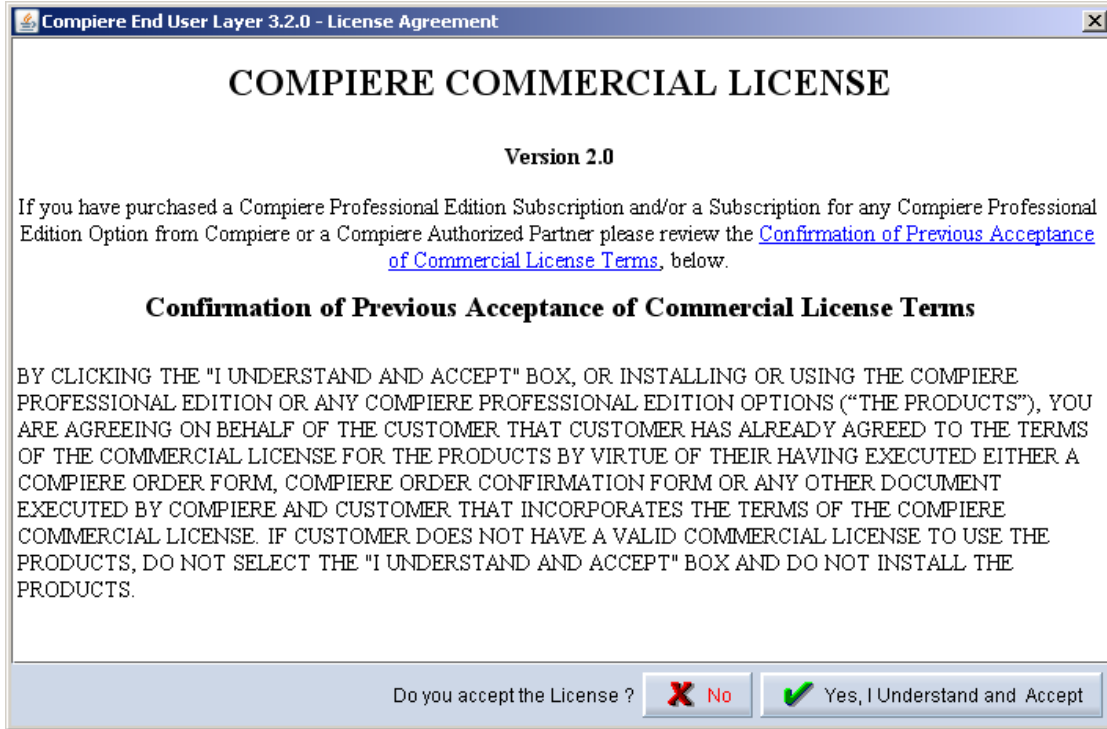
**IMPORTANT:** If you don't provide the correct email/password or if you don't have Internet connection you won't be able to select Compiere Professional or any of the other optional components



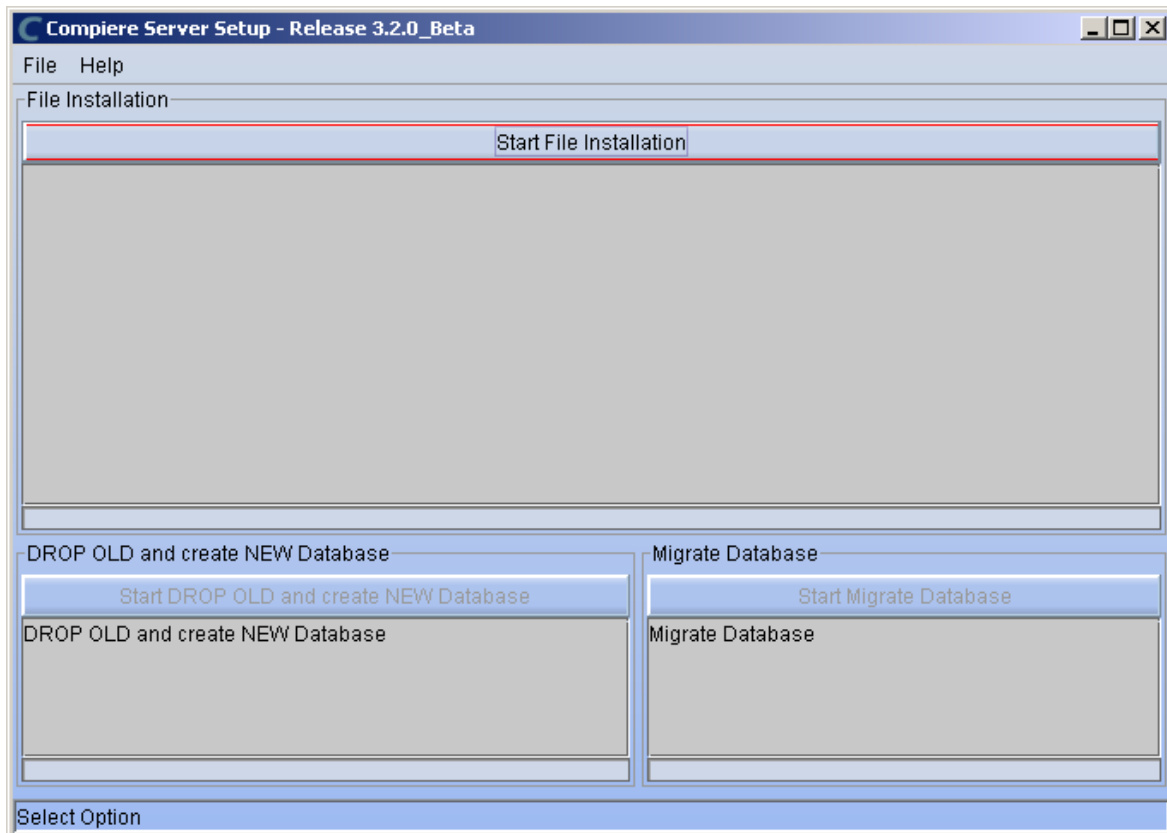
- 9) Next, read and accept the Compiere Public License agreement.  
**Hint:** You might get more than one license agreement, depending on the applications that you are installing. Notice that XUOM is a sample application extension



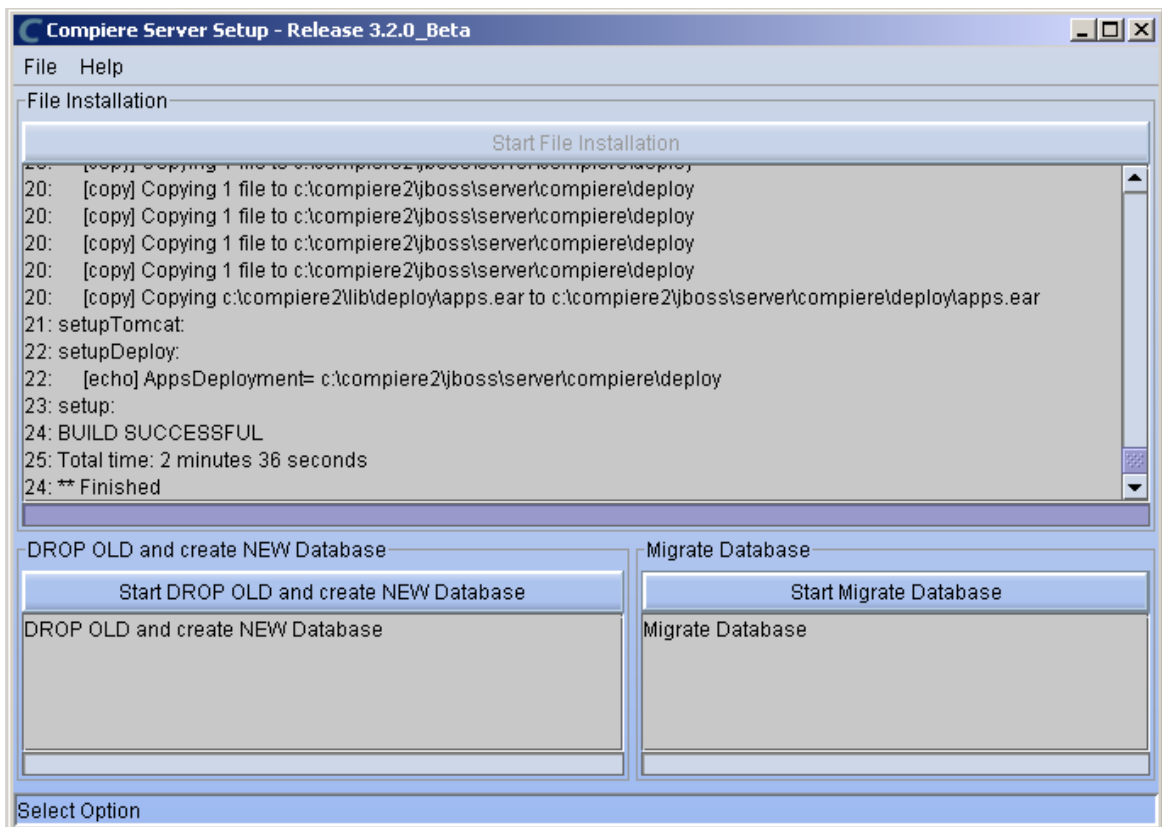
- 10) If you are installing Compiere Professional, you will receive a Commercial license agreement. Please read and accept the license agreement, in order to continue.  
**Hint:** You might get more than one license agreement, depending on the applications that you are installing.



- 11) Click on Start File Installation



12) When the File Installation has completed click on Start Migrate Database.



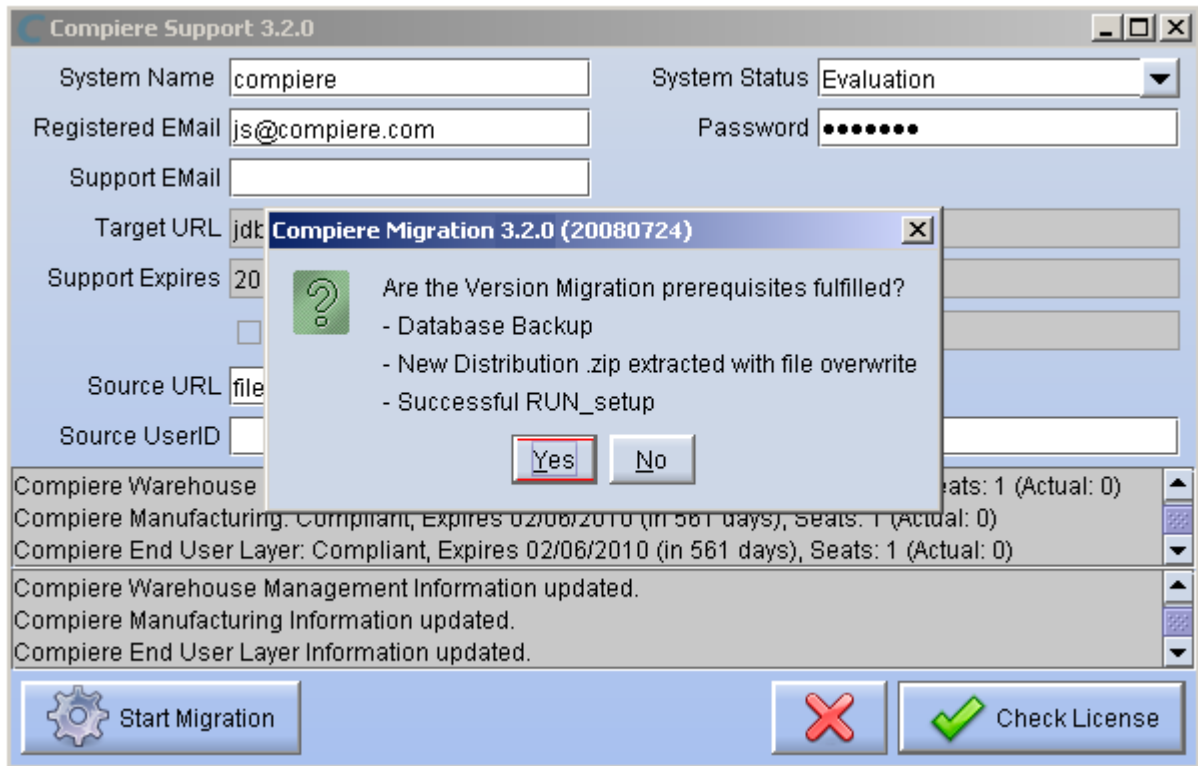
13) Provide the following information exactly as it was registered in the Compiere Web store and click **Check License** to validate your asset information (Note: This information may already be populated if it was entered in the system window)

- System Name
- Registered Email
- Password

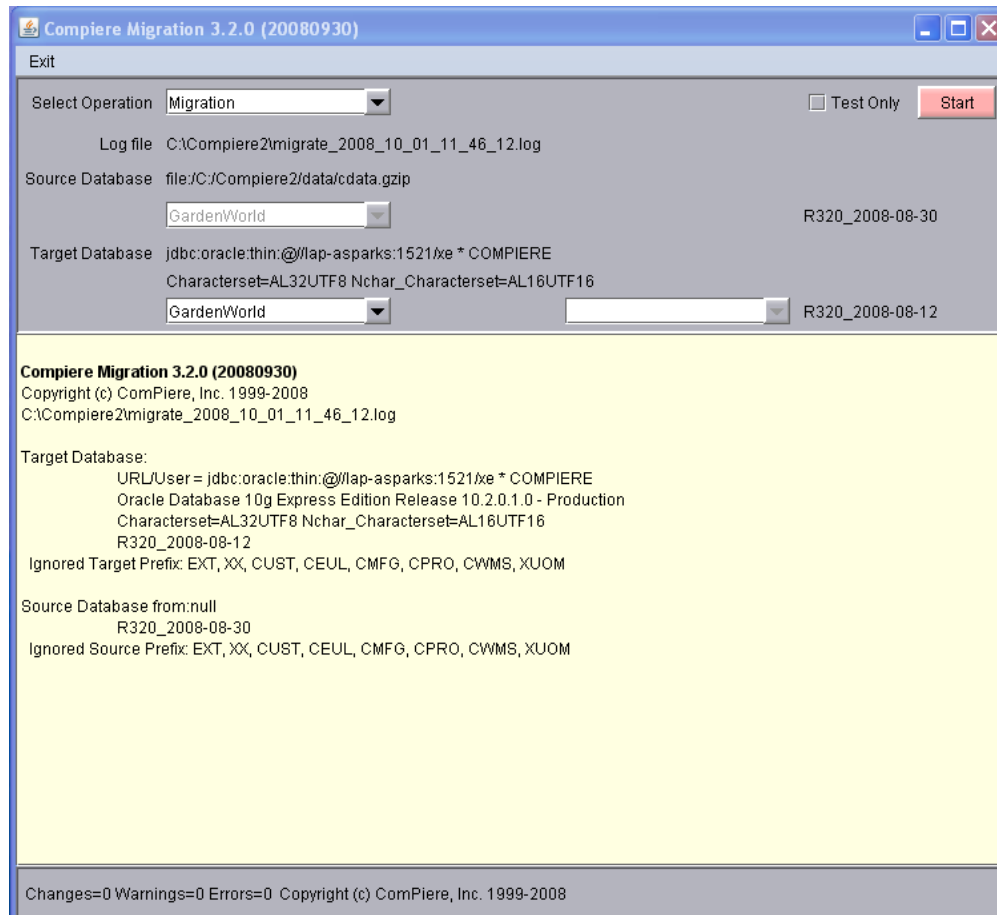
**Tip:** If you get the “Core Invalid” error after selecting the ‘Check License’ button, that is an indication that you did not select the appropriate action for the Core component in step #5. In this case, Exit the setup and support windows and execute RUN\_setup again selecting Standard plus any other components to install.

14) Click on “**Start Migration**”.

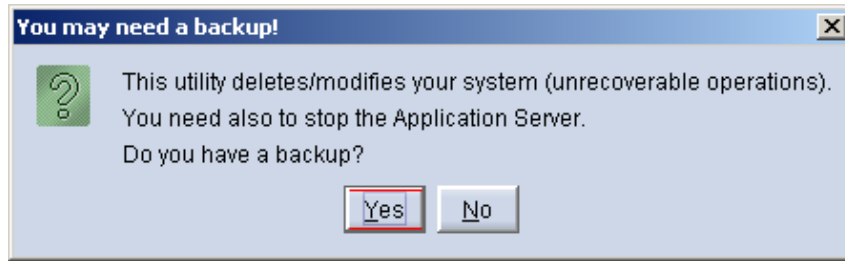
15) At the Compiere Version Migration Prompt, click “Yes” to proceed with the Migration.



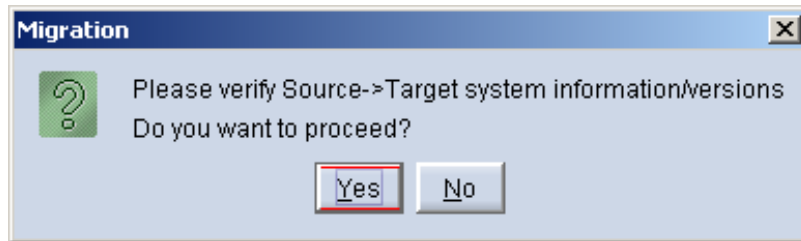
16) Unselect the “Test Only” option, and click Start.



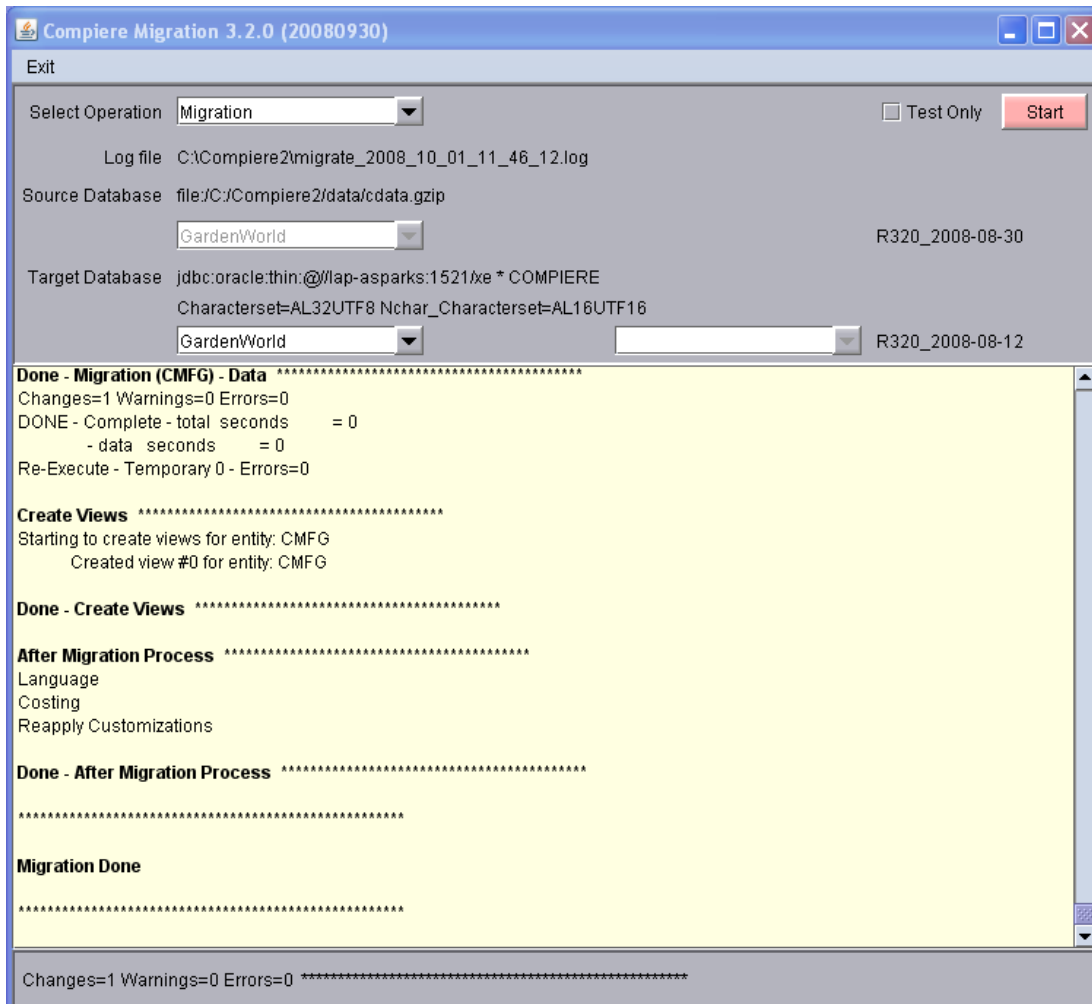
17) Confirm that you have a current back up of your database



18) Confirm that the Source and Target database versions from the Compiere Version Migration window are correct.



19) Verify that the migration finish with no errors and the message “**After Migration - DONE**” is displayed. In case you get any errors, please be sure to review the list of known issues listed in this document before logging a service request.



20) Verify the following log files for errors:

- a. migrate\_2010\_mm\_dd\_hh\_mi\_ss.log: complete log
- b. migrate\_2010\_mm\_dd\_hh\_mi\_ss.err.log: subset of log with just errors
- c. 2010-mm-dd\_#.log: possible additional errors not printed to the migration log. (search for the file with the text "Compiere Migration 3.7")

21) If you have a Compiere Professional or Enterprise Edition license, execute **utils/RUN\_Support** and click "Check License" to activate your license.

**Tip:** There is no need to click the start migration button.

22) After you have pressed the Check License button you should be able to see if your Professional License has been activated.

23) After Compiere Professional license has been updated you may click the "X" to close the window.

---

**Hint:** It is NOT necessary to click the Start Migration at this point.

- 24) Start the Apps Server using the script `utils/RUN_Server2`
- 25) To start Compiere in the Web UI after migration, it is required that all Web UI users clear their browser cache first.

## Multi-Server Installation

## Compiere Enterprise Edition

On a multi-server installation, after upgrading the main application server and database you need to run the following on the additional application servers that are used to load balance the web UI connections:

- 1) Unzip the binary distribution to update the Compiere2 folder
- 2) Copy the template for the configuration file  
`Compiere2/Utils/CommandLine/CLConfigurationTemplate.sh/bat`  
To  
`Compiere2/Utils/CommandLine/CLConfiguration.sh/bat`  
and configure it so the Apps Server is the local server where you are doing this installation, but the database server is the box where you already installed Compiere
- 3) Execute the following script to run only the file installation  
`cd Compiere2/Utils/CommandLine`  
`CLFileInstall CLConfiguration.sh`

**IMPORTANT:** Be sure to use the `CLFileInstall` script. If you use `CLInstall` it will drop your database user

- 4) Delete the files `COMPIERE_HOME/jboss/server/compiere/deploy/compiereRoot.ear` to ensure that there won't be conflicts by having multiple accounting, request, etc. processors
- 5) Start the apps server
- 6) Configure your load balancing solution to distribute part the load to the additional servers. Be sure to use sticky sessions to ensure that all requests from a session go to the same application server.

Support for this feature is only available for customers using Enterprise Edition. For more details about the different [Compiere Editions](#) please see our website.

---

**Note:** After migration, (re-) apply the language packs when needed.

---

---

## Post Migration Steps for RMA/RTV

This step is only relevant if you plan to use the new returns functionality and you are **migrating from 2.6.3 or older**.

Compiere now has explicit return transactions. We discontinued the previously seeded "Return Material" functionality.

In the "Document Type" window you need to do the following for every Tenant/Client:

### 1) Delete or de-activate the document types

- Return Material
- MM Customer Return  
*Hint:* This is discontinued functionality

If you choose to deactivate the obsolete document types (as opposed to deleting them), please rename the document type 'MM Customer Return' to an alternate name (For eg., ' \*\* MM Customer Return \*\* Do Not Use \*\*') so you can successfully create the new document types detailed below.

### 2) Create Return Document Types

- MM Vendor Return
  - Copy "MM Receipt" and set Name
  - Select Return Transaction
  - De-Select Counter Document flags
  - Optionally select Confirmations
- Vendor RMA
  - Copy "Purchase Order" and set Name
  - Select Return Transaction
  - De-Select Counter Document flags
- MM Customer Return
  - Copy "MM Shipment" and set Name
  - Select Return Transaction
  - De-Select Counter Document flags
  - Optionally create a special Document Sequence and or Confirmations
- Customer RMA (Copy Standard Order)
  - Copy "Standard Order" and set Name
  - Select Return Transaction
  - De-Select Counter Document flags
  - Select AR Credit Memo for Invoice Document Type
  - Select the created MM Customer Return for Shipment Document Type
  - Optionally create a special Document Sequence

Unfortunately, we cannot do the above steps automatically as this is configuration specific user data.

**Tip:** For an example of a set-up, please check GardenWorld in a fresh install or in a newly created Tenant.

---

## **Appendix B**

### Installation Instructions

---

## Compiere 3.7.0 Installation Instructions

This is for a new installation of Compiere. If you already have installed a previous version of Compiere, please refer to the Migration instructions.

### Prerequisites

- Database Oracle XE, Oracle 10gR2, Oracle 11gR2 or EnterpriseDB Postgres Plus Advanced Server 8.3, 8.4SP1.  
**Important:** It is mandatory to use a Unicode character set
- Database approved Linux Operating System, Windows 2003, 2008, XP or 7
- Disk Space: > 5 GB (includes database)
- Swap Space: > 1GB
- Memory: > 512 MB - Recommended: > 1 GB
- TCP/IP connection
- Network setup with DNS server and a domain.  
**Tip:** Do not use IP addresses.
- Internet access

**Hint:** Notice that the screenshots in this document refer to the installation on Windows, but the process is the same for Linux, except for the paths (e.g. C:\Compiere2 vs. /Compiere2) and the extension of the scripts (.bat vs. .sh)

### Database Installation

Install Database – For the instructions on how to install Oracle XE and EnterpriseDB on Windows and Linux please use the install guide on the Compiere website <http://www.compiere.org/support/installation.php>.

If you are using Oracle XE you need to modify the following database parameters:

- Start SQL\*Plus (Start => Programs => Oracle Database 10g Express Edition => Run SQL Command Line)
- connect system/xxxx
- alter system set processes=100 scope=spfile;
- Re-start the database (Start => Programs => Oracle Database 10g Express Edition => Stop DB & then Start DB)

### Java Installation

1. Download and install [Sun Java JDK 6](#) (SDK), update 5 or higher.  
**Important:** The Compiere Server requires the JDK (not just JRE).
2. For installation instructions see the JDK section on this page: <http://java.sun.com/javase/6/webnotes/install/index.html>

### Compiere Installation

3. Install /Setup Compiere Server (this includes the Client as well)
  - 1) Download the current version of Compiere: [Web Store](#) (for current customers) or free [Community Edition and Professional Trials](#) .
  - 2) Extract the .zip file. The steps shown assume that you extract to the root directory, resulting in a COMPIERE\_HOME of C:\Compiere2 in Windows or /Compiere2 in Linux.
  - 3) Set the JAVA\_HOME system variable to the location of your java JDK installation (e.g., 'C:\Program Files\Java\jdk1.6.0\_05') and add JAVA\_HOME/bin to the PATH  
  
To update the JAVA\_HOME in Windows, right click on My Computer and choose Properties. Then move to the advanced tab and click on Environment Variables. Find the JAVA\_HOME variable and click Edit.
  - 4) Verify that the bin directory for your database executables is included in the PATH. Also, if using Oracle XE on Linux, run \$ORACLE\_HOME/bin/oracle\_env.sh.

To update the PATH in Windows, right click on My Computer and choose Properties. Then move to the advanced tab and click on Environment Variables. Find the PATH variable and click Edit.

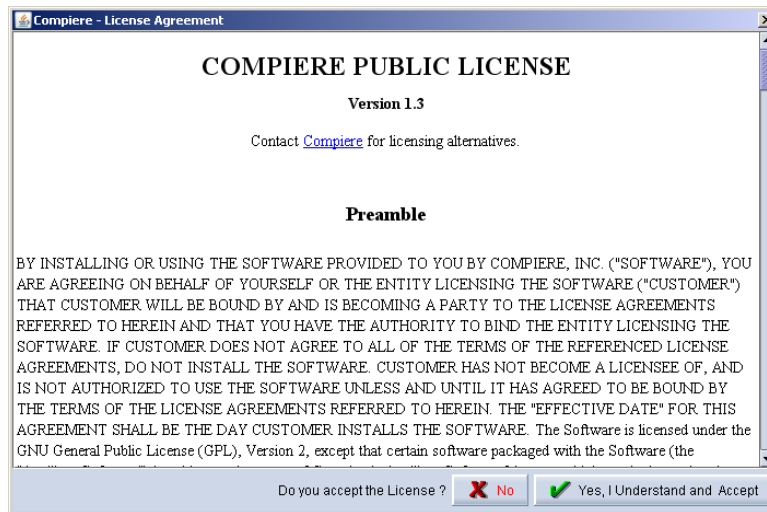
- 
- 5) Set the COMPIERE\_HOME system variable to the path of your Compiere installation (e.g., 'C:\Compiere2')
  - 6) Execute the script \$COMPIERE\_HOME/RUN\_Setup.

**Note:** Compiere requires Internet connection for installation. If you are using a proxy server then you need to modify the script Compiere2/RUN\_setup to set your proxy options.

- 7) Select Database Type Oracle XE, Oracle (for Standard or Enterprise Editions) or PostgreSQL (for EnterpriseDB).
- 8) For System Password, enter the System database User password (e.g. manager)
- 9) For Database Password, enter the Compiere database user password, (e.g. 'compiere')
- 10) For Server Names, i.e., Application, Database and Mail, use the DNS name of the server. **Hint:** Do not use localhost (127.0.0.1) or IP addresses.

- 11) Enter or update any other parameters as necessary.
- 12) Select the Help button, for information on any field.
- 13) Select the Test button to check the parameters. **Tip:** The parameters will only save after they have been verified.
- 14) If an entry is unverifiable, it will display with a red X. Correct the entry and re-select Test.
- 15) Once all fields are verified, click the Save button to proceed.

- 16) The Compiere Public License Opens. Click “Yes, I understand and Accept” to continue.



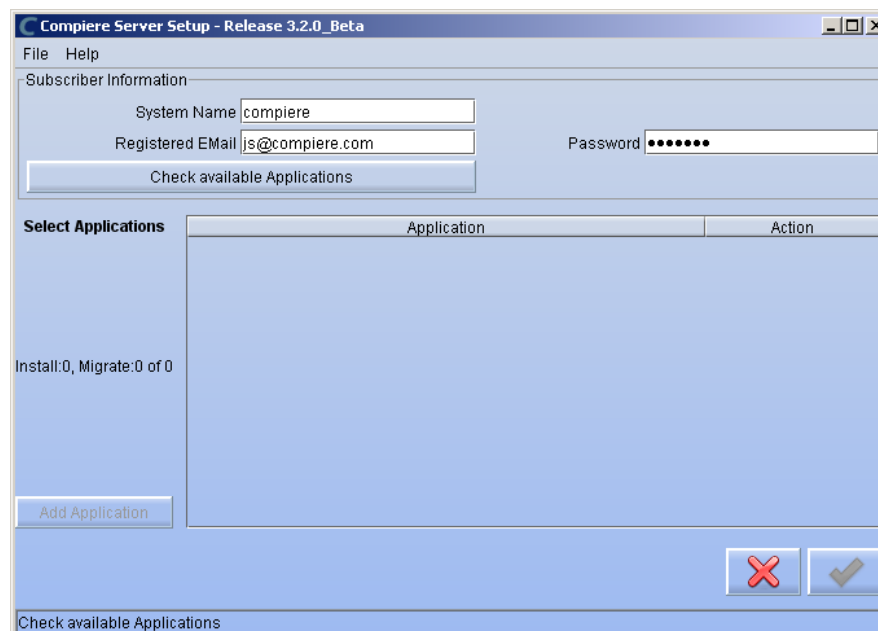
- 17) The following prompt will display describing your new Security Key. Click 'Ok' to continue.



- 18) The Next step is to provide the Subscriber Information. Current customers should provide the subscriber information (System Name, Email and Password) exactly as it was registered in the Compiere Web Store to get a complete list of applications.

Click Check Available Applications to get a list of applications that are available to be installed.

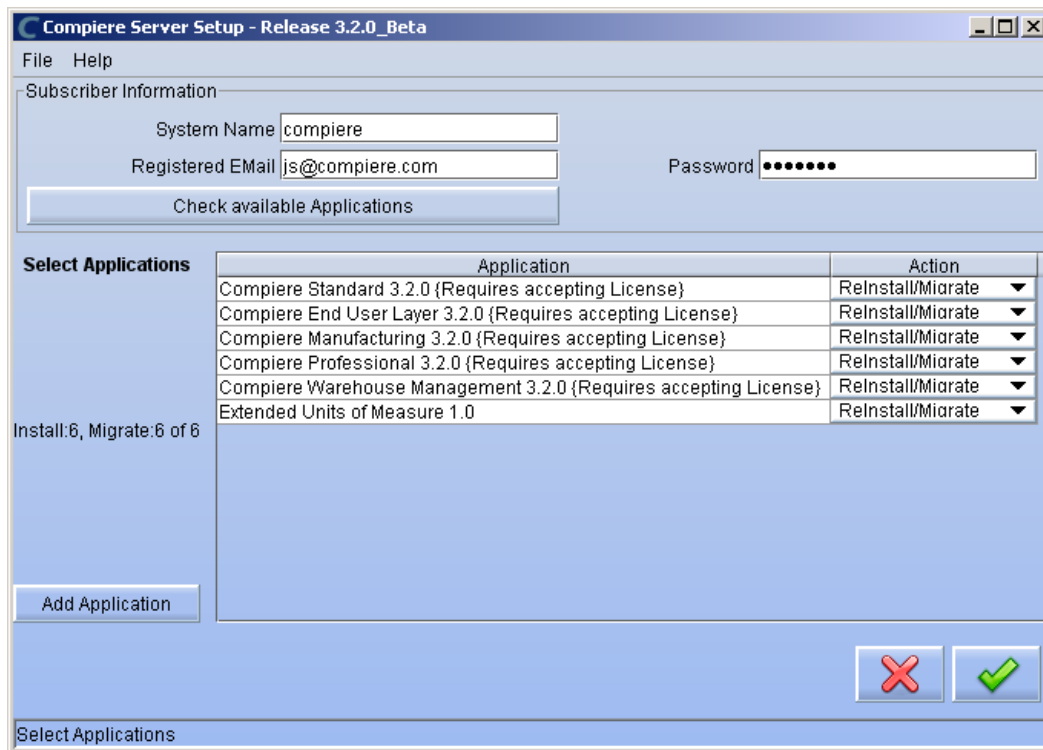
**Tip:** Community Edition users may leave the fields blank and click “Check available components” to install the Community Edition.



- 19) Select the applications that you would like to install. You can include additional applications by using the button Add Application.

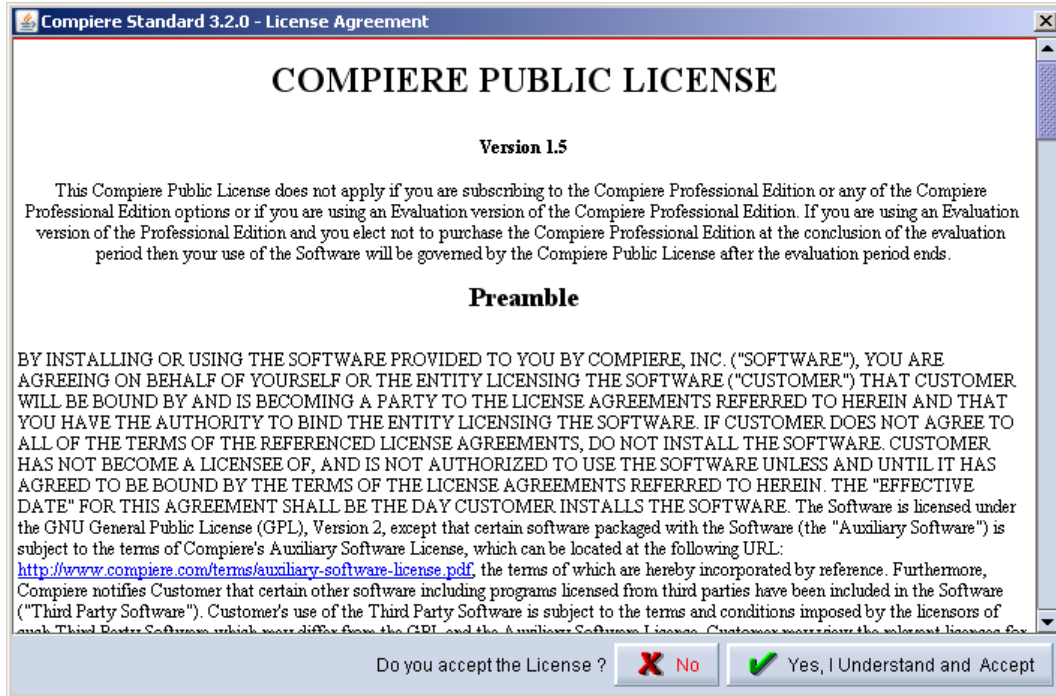
By default all available applications will be installed. If you do not wish to install one of them you should change the action field from “New Install” to “-None-“. Notice that Compiere Core is a *Mandatory Prerequisite* and must be selected.

Select the OK button to continue



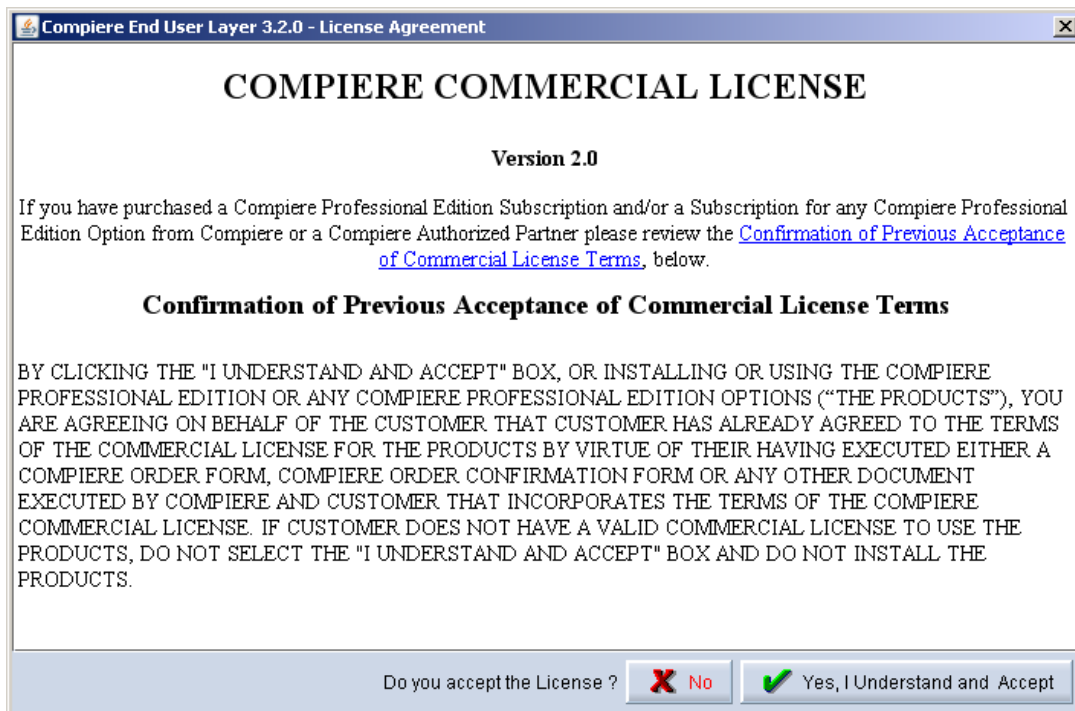
**IMPORTANT:** If you don't provide the correct email/password or if you don't have Internet connection you won't be able to select Compiere Professional or any of the other optional components

- 20) Next, read and accept the Compiere Public License agreement.  
**Hint:** You might get more than one license agreement, depending on the applications that you are installing.

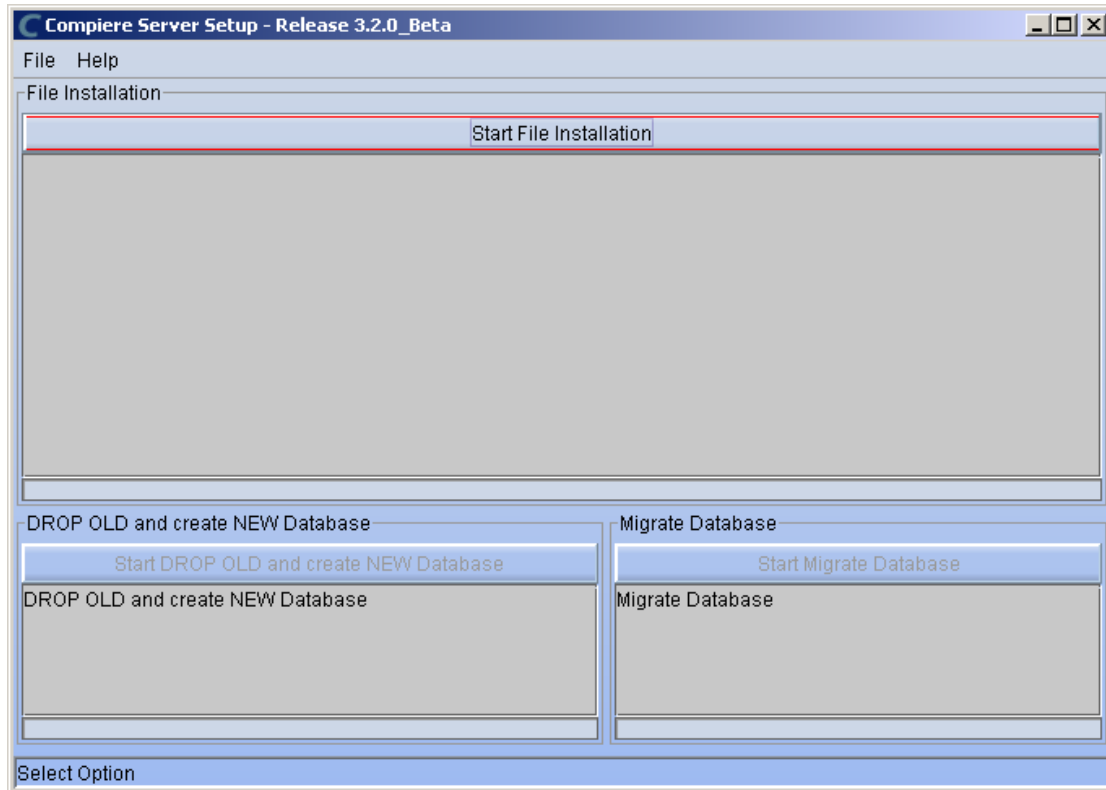


21) Then read and accept the Compiere Commercial License agreement.

**Hint:** You might get more than one license agreement, depending on the applications that you are installing.



22) After accepting the license agreement the following window will display:

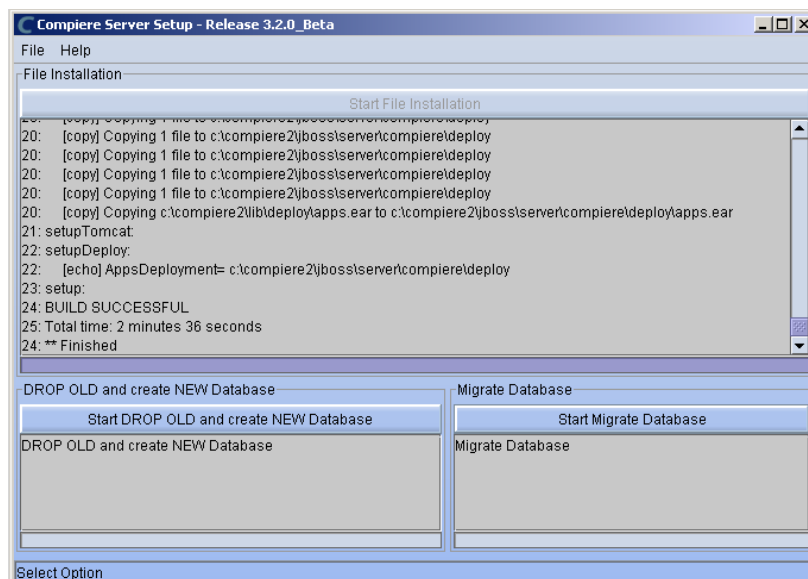


23) Select Start File Installation.

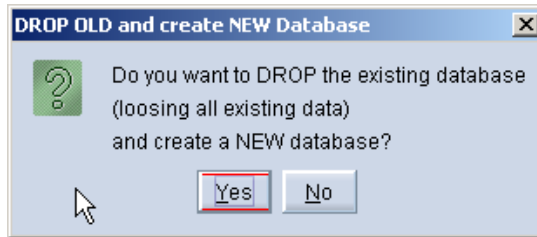
**Important:** At this point, you must be connected to the internet to continue or the installation will not succeed.

24) Once the file installation is complete, select Start Create New Database.

**Note:** If you already have a Compiere database in your system, you will be presented with a split panel after 'Start Server Install'. Click the left panel (Start DROP OLD and create NEW Database) if you want to replace the existing database with the new database.

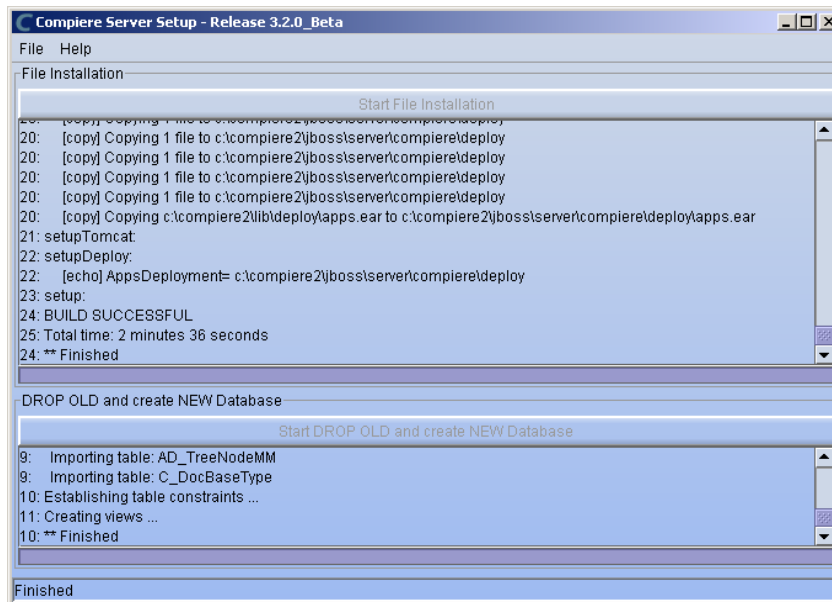


25) At the prompt select 'Yes' to Drop the existing Database and create a new database.



**Warning:** If you choose to replace the existing database, all data in the existing database will be removed.

- 26) Verify that you see a '10: \*\* Finished' message at the end of this step. Then a new window should pop-up to do the license validation.



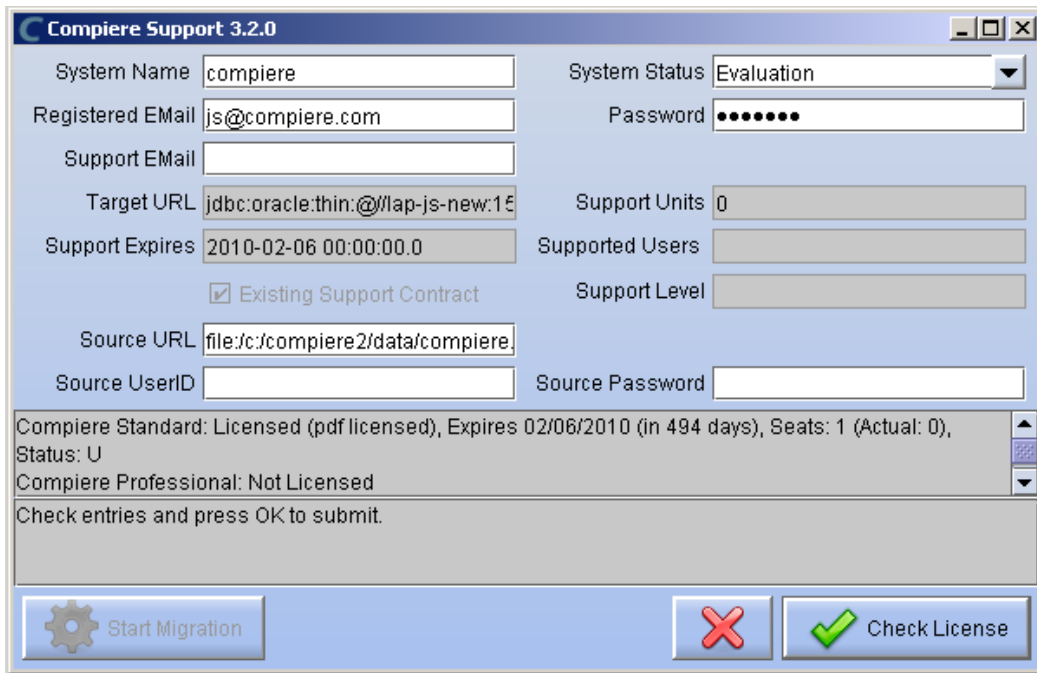
- 27) The Compiere Support window opens. Complete the necessary fields in order to validate your assets.

**Hint:** If you only intend to use the Community Edition of Compiere 3.0, you may skip the following steps and go to the Application Server section.

**Important:** For customers with a valid support contract with Compiere, this is a required step to ensure that the features associated with the support level are enabled. If you are a customer and do not have a web store login, please contact your system administrator or Compiere Support first. If you are not a customer and would like to obtain a trial license for the Professional Edition, please [Contact Us](#).

- 28) Provide the following information exactly as it was registered in the Compiere Web store and click Check License to validate your asset information.

- System Name (name provided in the web store registration)
- Registered Email (email address provided in the web store registration)
- Password (web store password)

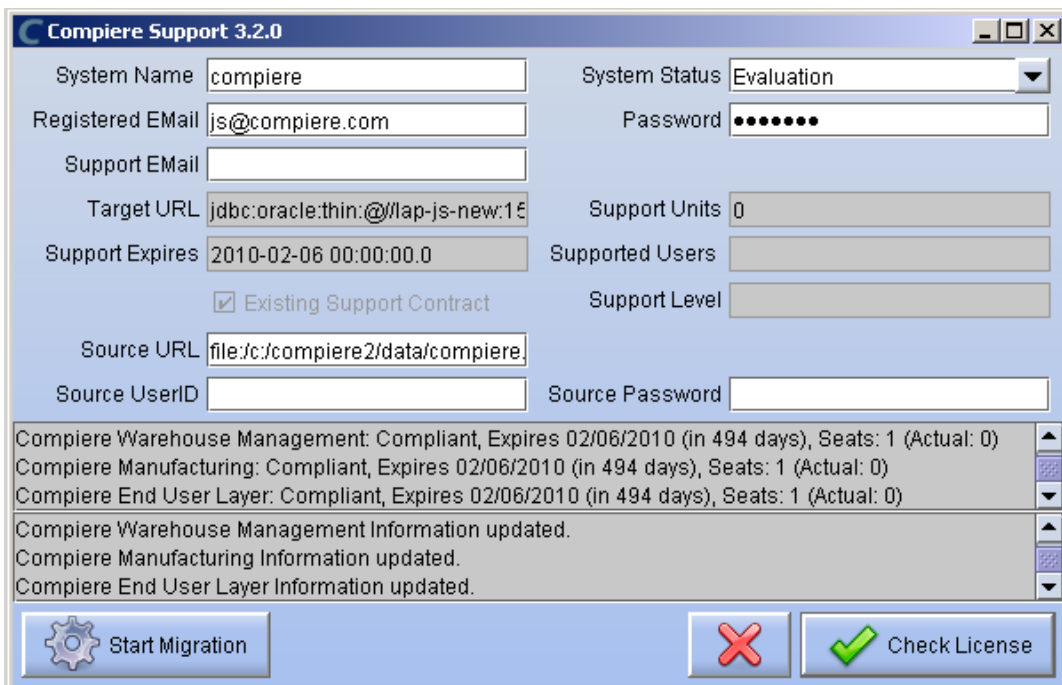


29) To verify your license, click the “Check License” button.

**Tip:** Do not click Start Migration.

Notice that internet access is required to validate the license information.

30) Next, review that your license information has been validated. If you have a trial license for Compiere Professional, but you currently don't have a license with Compiere, you will see that the license for Standard is invalid. This is expected as the trial doesn't include Standard and you may ignore the error.



31) After Compiere Professional license has been verified, click the “X” to close the window.

**Note:** If you get the error “You do not have an appropriate license to use this feature” when starting the web UI, then login to the server and execute `utils/RUN_Support` to validate again your license and restart the application server. When using the Swing client, ensure that your database connection information matches exactly the information in the

---

target URL in RUN\_Support (including the fully qualified server name)

---

32) Close any additional Setup and /or Support windows.

## Run Application Server

### 4. Start the Compiere Application Server

- 1) Execute `utils/RUN_Server2`.
- 2) There should be no errors. Check the logs in `$COMPIERE_HOME/jboss/server/compiere/log` to verify this.
- 3) Common problems include ports already in use:
  - 17:41:09,085 ERROR [NamingService] Could not start on port 1099  
java.net.BindException: Address already in use:  
JVM\_Bind at java.net.PlainSocketImpl.socketBind(Native Method)
  - There is another program using port 1099; Stop it and restart `Run_Server2`  
or setup Compiere to use another port in `RUN_setup`.

Likely port conflicts:

- 80 - Other web server running (or you need privileges under Linux/Unix), or Skype
- 8080 – Used by Oracle Database
- 1099 - Often used by IDEs for debugging, or by internet messengers (Skype, Gtalk, etc.)

## Start Compiere

### 5. Start the Compiere Client.

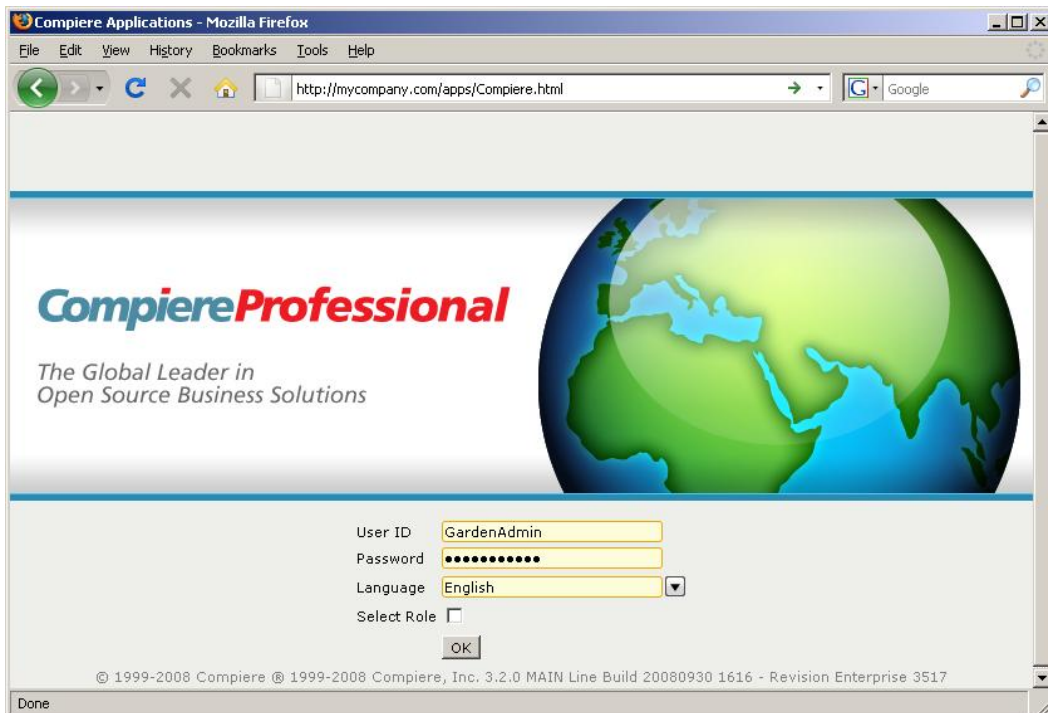
- 1) Start the Swing client by double clicking on the Compiere shortcut in your desktop or by executing **RUN\_Compiere2** from the \$COMPIERE\_HOME directory.

Default users and passwords for the sample Garden World application:

- GardenUser/GardenUser
- GardenAdmin/GardenAdmin
- System/System
- SuperUser/System



- 2) Alternatively, if you have access to the Professional Edition, you can launch the application from the browser by using the URL: <http://server:port/apps>, (e.g. <http://mycompany.com:80/apps>.)  
**Tip:** For optimal performance, the Firefox browser is recommended for using the Compiere Web User Interface.



**Information:** For additional information see the Compiere home page <http://www.compiere.com>.

---

## **Appendix C**

### Application Extensions

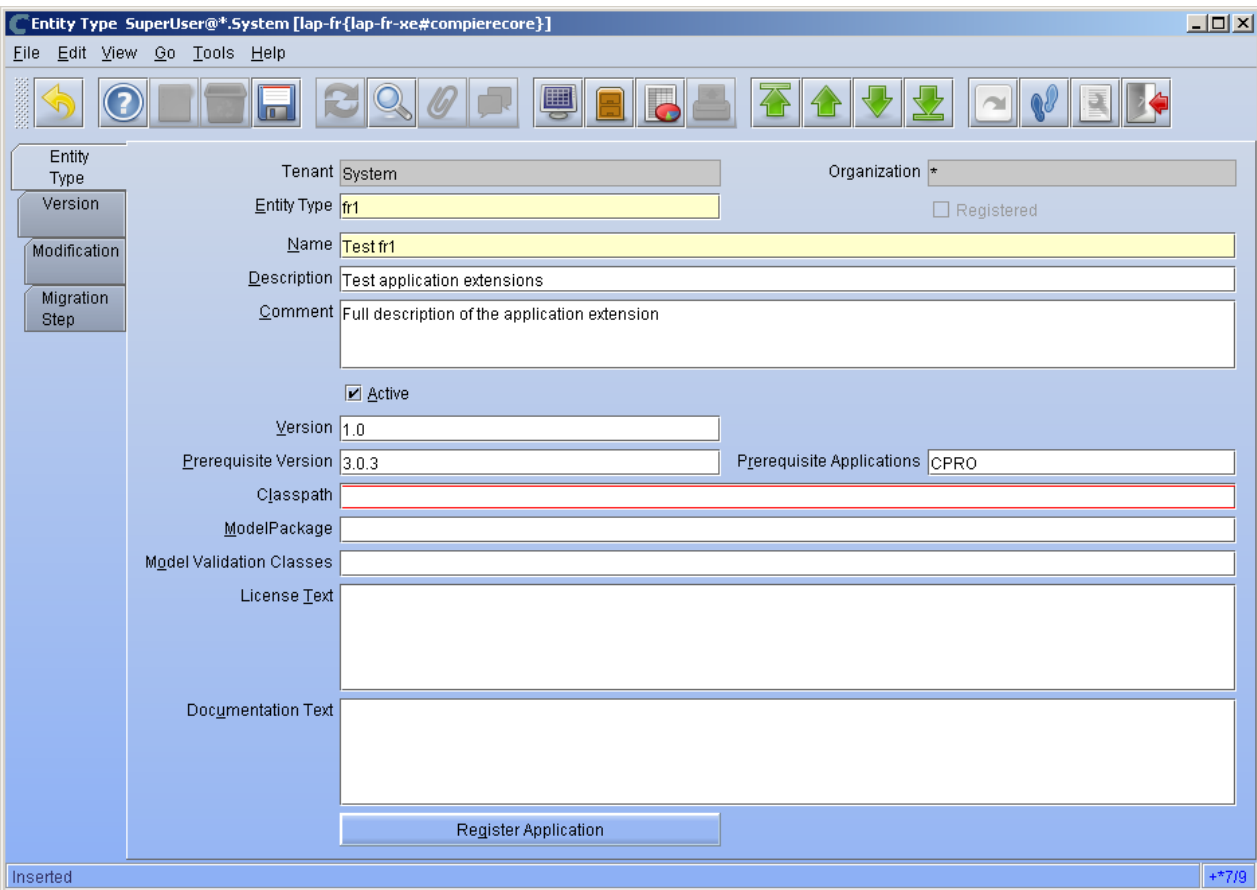
## Application Extensions - Compiere Partners

This section is for Application Extensions in Compiere available as functionality for Partners only. This framework will allow Partners to create application extensions that include both reference data and code, and can be distributed to their customers through Compiere.

### Registration of Application Extensions – Application Provider (Partner)

Use the steps below to register for Application Extensions:

- 1) To register an Application Extension, log a Support Request with Compiere.
- 2) Login with the System Administrator role.
- 3) Open the Entity Type window (Application Dictionary => Entity Type) and create a new record.



The screenshot shows the 'Entity Type' window in Compiere. The window title is 'Entity Type SuperUser@\*.System [lap-fr{lap-fr-xe#compierecore}]'. The menu bar includes File, Edit, View, Go, Tools, and Help. The toolbar contains various icons for navigation and actions. The main form area is divided into several sections:

- Entity Type:** Tenant: System, Organization: \*
- Version:** Entity Type: fr1, Registered:
- Modification:** Name: Test fr1, Description: Test application extensions, Comment: Full description of the application extension
- Migration Step:**  Active, Version: 1.0, Prerequisite Version: 3.0.3, Prerequisite Applications: CPRO
- Classpath:** (Empty field)
- ModelPackage:** (Empty field)
- Model Validation Classes:** (Empty field)
- License Text:** (Empty field)
- Documentation Text:** (Empty field)

At the bottom of the form is a 'Register Application' button. The status bar at the bottom left shows 'Inserted' and the bottom right shows '+\*7/9'.

**Hint:** Be careful not to modify the entities C, D, CPRO or XUOM.

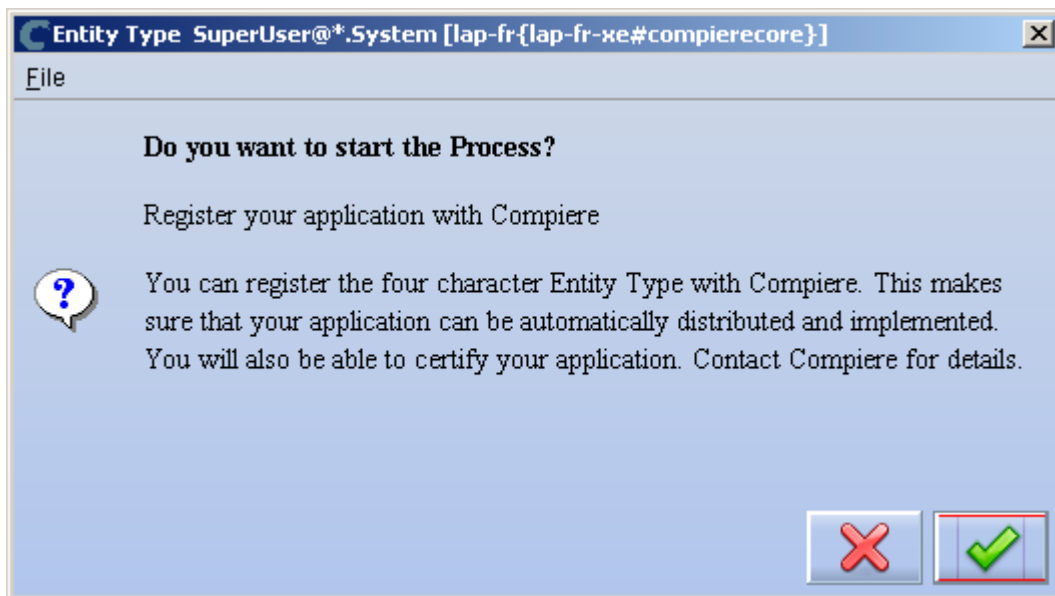
**Important:** Complete all the mandatory fields. For entity type, notice that names beginning with “C” and “X” are reserved for Compiere and you must use four characters.

Comments about optional fields:

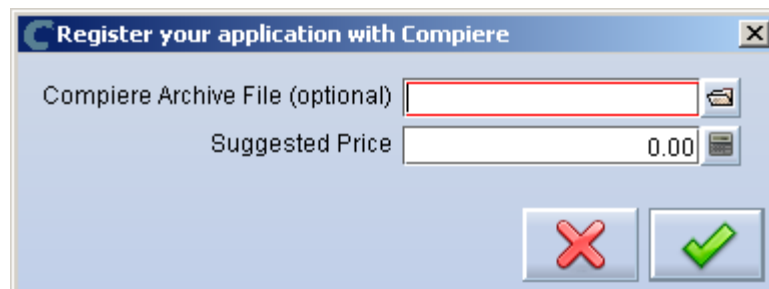
- Version: The version of your extension. Usually 1.0 for the first version.
  - Prerequisite version: The Compiere Core version that is required for this extension, e.g. 3.3.0. You need to use the exact text as defined for the entity type D.
  - Prerequisite applications: The entity type of the applications that need to be installed in order to install this extension. For example, set it to CPRO if the extension must be applied on top of the professional edition.
  - Classpath: List of additional jar files required for this extension.
  - Model package: Specific model package from the jar files listed in the classpath field.
- 4) You do not need to enter any information on the Version, Modification, or Migration Step tabs.
  - 5) Ensure that your System window contains your up to date information for your system and web store email/password information.
  - 6) Click "Register Application" to send your request to Compiere.

**Tip:** If an entity type with the same name has already been registered you'll get an error "Error: Already registered: XXXX". You will have to create a new record with the new entity type. Verify with Compiere that the new entity type that you plan to use is available.

- 7) Click 'Ok' to start process.



- 8) Leave the defaults in place and click 'Ok' to continue.



- 9) At this point the status will be pending approval from Compiere. Please log a support request in our case management system requesting the approval of your component including a long description and license type.

## Creation of Application .car file – Application Provider (Partner)

Follow the steps below to create the Application.car file:

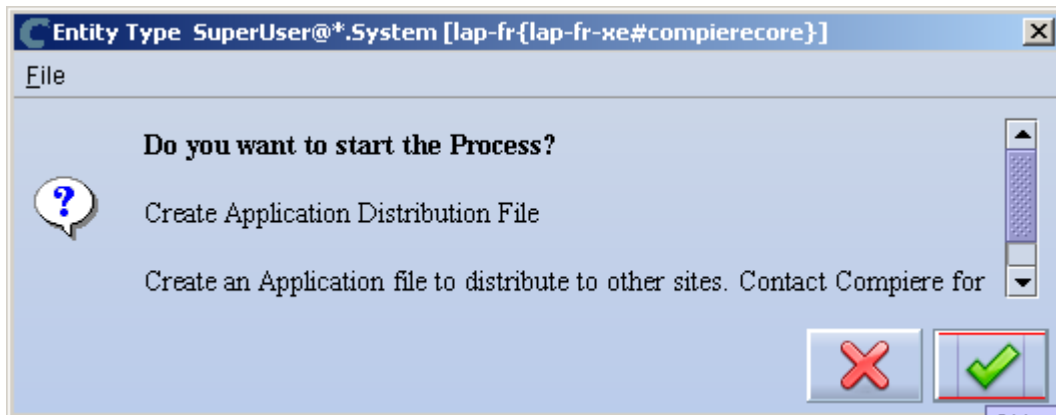
- 1) Make all the application dictionary changes using the entity type that you registered in the previous step.
- 2) Generate jar files for the custom code required by your extension.
- 3) After having your new Entity Type approved by Compiere; login to Compiere with the System Administrator role and query the entity type that you registered in the previous step and click “Create Application File.”

The screenshot shows the 'Entity Type' configuration window in Compiere. The window title is 'Entity Type SuperUser@\*.System [lap-fr-{lap-fr-xe#compierecore}]'. The interface includes a menu bar (File, Edit, View, Go, Tools, Help) and a toolbar with various icons. On the left, there is a sidebar with buttons for 'Entity Type', 'Version', 'Modification', and 'Migration Step'. The main area contains the following fields and controls:

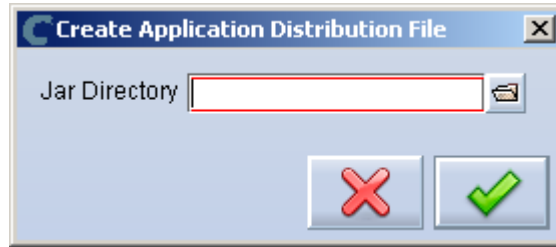
- Tenant: System
- Organization: \*
- Entity Type: LFR1 (with a checked 'Registered' checkbox)
- Name: Test fr1
- Description: Test application extensions
- Comment: Full description of the application extension
- Active:
- Version: 1.0
- Prerequisite Version: 3.0.3
- Prerequisite Applications: CPRO
- Classpath: lfr1\_code.jar
- ModelPackage: (empty)
- Model Validation Classes: (empty)
- License Text: (empty)
- Documentation Text: (empty)

At the bottom of the form, there are two buttons: 'Register Application' and 'Create Application File'. A status bar at the bottom left shows 'Record saved' and the bottom right shows '7/9'.

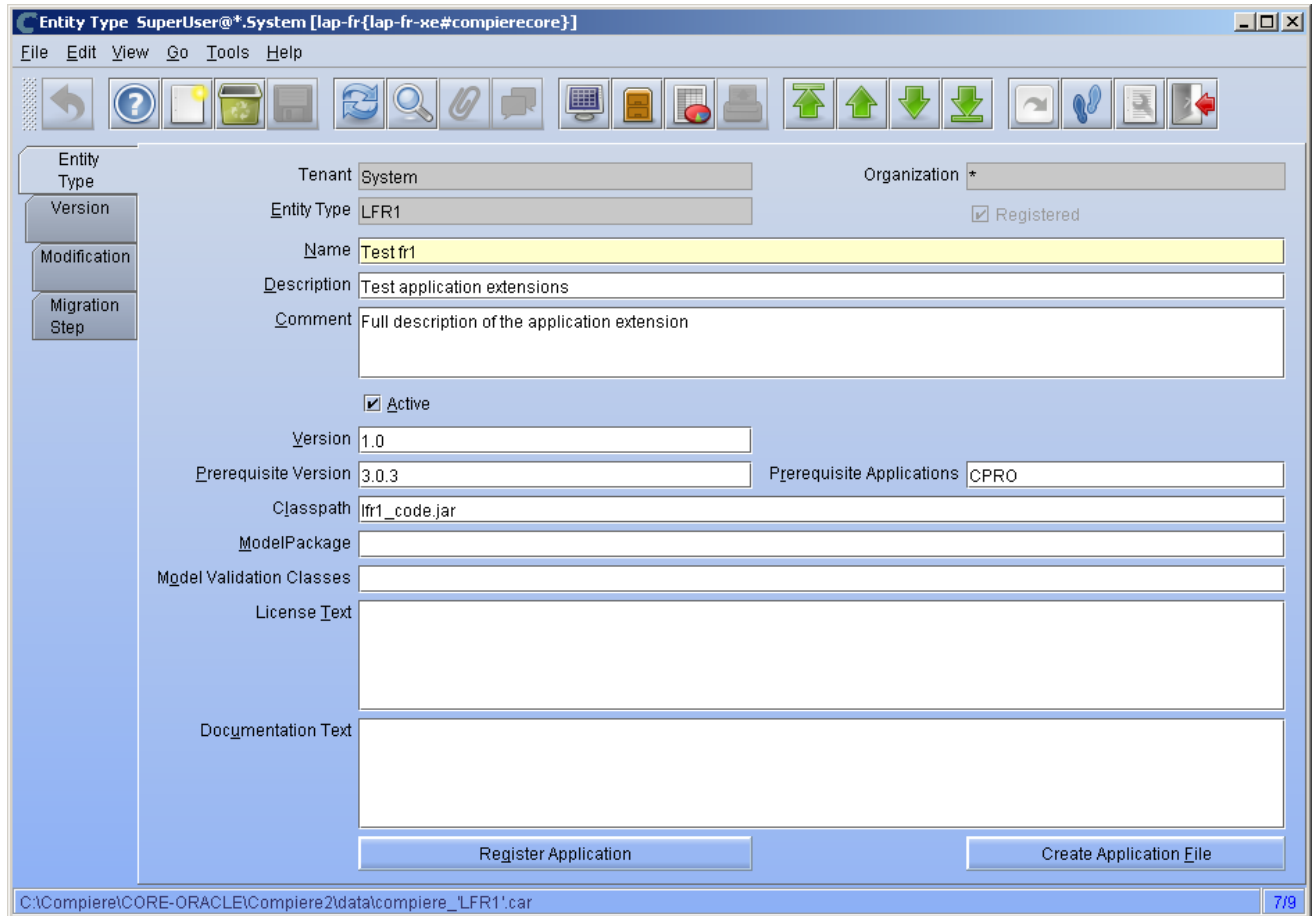
- 4) Click 'Ok' to start process.



- 5) Provide the directory for the jar file listed in the field classpath.



- 6) The car file will be generated in the COMPIERE\_HOME/data directory. The newly generated .car file will have a name of compiere\_XXXX.car.



**Important:** The naming convention for .car files has changed, (e.g. compiere\_'CPRO'.car from 3.0 and 3.1 is now compiere\_CPRO.car in 3.3, i.e. without quotes in the file name). If a customer unzips the Compiere installation files into the same directory, it is possible to end up with both compiere\_'CPRO'.car as well as compiere\_CPRO.car. This in turn will cause Compiere Professional to show up twice in the installation window. To avoid this situation, customers will need to manually delete compiere\_'CPRO'.car and compiere\_'XUOM'.car from COMPIERE\_HOME/data directory. These are the only two .car files that Compiere has distributed prior to 3.2. If a customer has created any additional .car files prior to 3.2, it is necessary to follow the same procedure for those .car files as well.

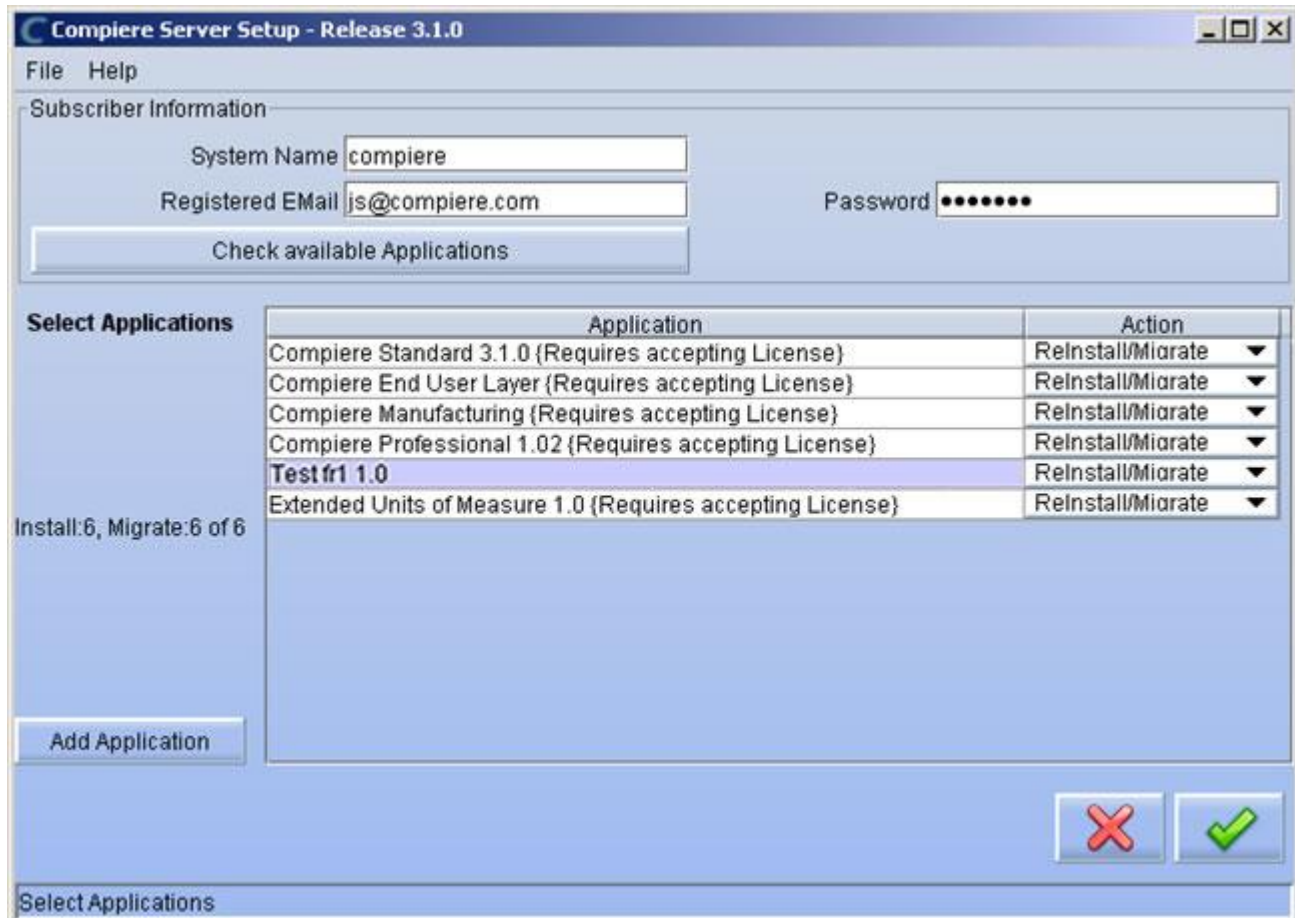
## Installation – Application Consumer (Customer)

Follow the steps below to install the Application:

- 1) After obtaining the car file for the application extension, copy it to the directory COMPIERE\_HOME/data.
- 2) Execute RUN\_Setup (see Appendix A for details on the setup information.)

**Important:** Be sure to have internet connection available to be able to get the license terms for the application extensions that you plan to install.

- 3) When you get to the window to select the applications, besides the application extension that you need to install, also select the option Reinstall/Migrate for Compiere Core 3.3.



- 4) Then continue with the MIGRATION steps as usual. (See Appendix A for more details.)

---

## **Appendix D**

### Command Line Scripts

---

## Command Line Scripts

Scripts are provided in the `$COMPIERE_HOME/utils/CommandLine` directory for experienced Compiere users who would like to perform Compiere instance creation and maintenance via command line or using automated scripts.

### CLInstall

**Purpose:** To create a new Compiere installation. When this script is run a new Compiere instance is created on the database specified via configuration file. Please note that existing Compiere database instance is dropped and a fresh new Compiere instance is created when this script is run.

The script validates the components that can be installed against Compiere License server and hence need to be connected to internet while running and have the appropriate license to allow you to install the components. The script also updates the License information after the instance is created.

All the component `.car` files present in `$COMPIERE_HOME/data` will be installed as long as you provide the correct subscriber information, otherwise only the standard application will be installed.

1) Environment Variables `$COMPIERE_HOME`, `$JAVA_HOME` need to be set.

2) The configuration parameters to `CLInstall` are provided via a configuration file. A template `CLConfiguartionTemplate` is provided in the same directory, which you can make a copy and edit the configuration parameters for your specific installation. All the parameters have one to one correspondence with the parameters on the first window that comes up when running `RUN_setup`

Subscriber information for License validation: `CL_SYSTEM_NAME`, `CL_WEBSTORE_EMAIL`, `CL_WEBSTORE_PASS`

Homes: `CL_COMPIERE_HOME`, `CL_JAVA_HOME`, `CL_JAVA_TYPE`

Database: `CL_COMPIERE_DB_TYPE`, `CL_COMPIERE_DB_SERVER`, `CL_COMPIERE_DB_PORT`,  
`CL_COMPIERE_DB_NAME`, `CL_COMPIERE_DB_SYSTEM`, `CL_COMPIERE_DB_USER`,  
`CL_COMPIERE_DB_PASSWORD`

Apps Server: `CL_COMPIERE_APPS_TYPE`, `CL_COMPIERE_APPS_SERVER`, `CL_APPS_SERVER_DEPLOY_DIR`,  
`CL_COMPIERE_JNP_PORT`, `CL_COMPIERE_WEB_PORT`

SSL Settings: `CL_COMPIERE_SSL_PORT`, `CL_COMPIERE_KEYSTOREPASS`

Mail: `CL_MAIL_SERVER`, `CL_ADMIN_EMAIL`, `CL_MAIL_USER`, `CL_MAIL_PASSWORD`

3) Running:

`CLInstall` takes in the configuration file as a parameter.

Sample Usage: `>CLInstall.bat CLConfiguration.bat`

Errors while running the script are displayed onto the console window and are also written to log files within the same directory.

### CLMigrate

This is very similar to `CLInstall.bat` except that it performs the migration of a Compiere instance instead of dropping and recreating a new instance.

### CLUpdateLicense

This script can be run to update the license information instead of executing `RUN_Support`. The script can be only run in a successful Compiere installation created via `RUN_Setup` or installation/migration via command line. The script can be edited to provide different subscriber information for license validation.

---

The following line in CLUpdateLicense.bat

```
"%COMPIERE_JAVA%" %COMPIERE_JAVA_OPTIONS% -cp %CLASSPATH% com.compiere.client.UpdateLicense
```

can be changed as follows to pass in the subscriber information

```
"%COMPIERE_JAVA%" %COMPIERE_JAVA_OPTIONS% -cp %CLASSPATH% com.compiere.client.UpdateLicense --  
sysname xxx --email xxx --password xxx
```

If the parameters are not specified, the subscriber information at the time of installation will be used to update the Licenses