



## Compiere 3.2 Release Notes

---

November 28, 2008

# Table of Contents

## Compiere 3.2 Release Notes

<b>Compiere 3.2 Release Summary</b>	<b>3</b>
Audience	3
Prerequisites	3
<b>Software Management</b>	<b>3</b>
Previous Installations	3
Recommended Infrastructure	3
Process to Log Support Requests for Compiere 3.2	3
Update/Migration Procedure	3
Install Procedure	3
Application Extensions	3
Delete Client and Delete Client Transactions	3
Compiere 3.2.1 Service Pack Information	3
<b>New In Compiere 3.2</b>	<b>4</b>
Warehouse Management	Compiere Warehouse Management 4
Business View Layer	Compiere Professional Edition 4
New Data Dictionary Feature: Value Assignment	4
Account Balance Summary	4
Reports Enhancements	4
Provision New Tenants Enhancements	4
Login Message Broadcast system Enhancement	5
Request Enhancements	5
Translation Enhancements	5
Additional Enhancements	Compiere Professional Edition 5
<b>The Web User Interface in Compiere 3.2</b>	<b>5</b>
Web User Interface Compiere 3.2	Compiere Professional Edition 5
<b>Fixed Issues for Compiere 3.2</b>	<b>6</b>
<b>Product Enhancements for Compiere 3.2</b>	<b>6</b>
<b>Known Issues in the Migration Process</b>	<b>7</b>
<b>Known Issues in the Install Process</b>	<b>7</b>
<b>Known Issues in Compiere 3.2</b>	<b>9</b>
<b>Appendix A</b>	<b>10</b>
<b>Compiere 3.2 Migration Instructions</b>	<b>11</b>
Prerequisites	11
Migration	11
Preserving Customizations	11
Migration Steps	11
Preparation	12
Migrate to a New Release	12
Post Migration Steps for RMA/RTV	22
<b>Appendix B</b>	<b>23</b>
<b>Compiere 3.2 Installation Instructions</b>	<b>24</b>
Prerequisites	24
Database Installation	24
Java Installation	24
Download Compiere	24
Run Application Server	31
Start Compiere	32
<b>Appendix C</b>	<b>33</b>
<b>Compiere 3.2 Application Extensions</b>	<b>34</b>
Registration of Application Extensions – Application Provider (Partner)	34
Creation of Application .car file – Application Provider (Partner)	36
Installation – Application Consumer (Customer)	38
<b>Appendix D</b>	<b>39</b>
<b>Delete Client and Delete Client Transactions</b>	<b>40</b>
<b>Appendix E</b>	<b>42</b>
<b>Fixed Issues for Compiere 3.2.1</b>	<b>43</b>
<b>Product Enhancements for Compiere 3.2.1</b>	<b>45</b>
<b>Known Issues in the Install Process of Compiere 3.2.1</b>	<b>45</b>
<b>Known Issues in Compiere 3.2.1</b>	<b>45</b>

---

# Compiere 3.2 Release Summary

Compiere 3.2 is a major release that adds more than 30 new, functional, technical, and business analysis enhancements. This new release continues Compiere's commitment to building open source applications that drive down costs and complexities of ERP. Visit <http://www.compiere.com/products/new-compiere-erp-3-2.php> to learn more about the Compiere 3.2 benefits.

Certain features in Compiere 3.2 require a Compiere Professional Edition subscription. Contact a Compiere Authorized Partner or Compiere Sales (<http://www.compiere.com/company/contact-us.php>) to acquire Compiere Professional Edition.

Compiere 3.2 may include certain prototype features and beta functionality as indicated in their respective user interfaces with a beta checkbox. These are not recommended for production. They are intended for only for evaluation as beta functionality.

## Audience

This guide is designed for Compiere Business Partners and Customers. It provides essential information for current Compiere administrators planning to install or migrate (upgrade) to Compiere 3.2.

## Prerequisites

- Working knowledge of Compiere ERP and CRM
- Compiere Web Store Access
- Sun Java 1.6.0 Update 5 or Later
- Database Oracle XE, Oracle 10gR2, Oracle 11g, or EnterpriseDB Postgres Plus Advanced Server 8.3

## Software Management

### Previous Installations

You can download the Compiere 3.2 from <http://www.compiere.com/wstore>. The migration tool will bring you up directly to Compiere 3.2 plus all the cumulative fixes included in the service packs without having to migrate to an intermediate release.

### Recommended Infrastructure

- Sun Java JDK 6 Update 5 or Later (not just JRE)  
- also known as Sun Java SDK.
- Database Oracle XE, Oracle 10gR2, Oracle 11g, or EnterpriseDB Postgres Plus Advanced Server 8.3.  
*Tip:* It is Mandatory to use a Unicode character set.
- Database approved Linux Operating System, Windows 2003 or Windows XP
- TCP/IP connection and Internet access
- Disk Space: > 5 GB (includes database)
- Swap Space: > 1GB
- Memory: > 512 MB - Recommended: > 1 GB
- Firefox Browser 3.0 is recommended for Web User Interface.

### Process to Log Support Requests for Compiere 3.2

To ensure timely service for any issues, we require that all new cases into Compiere's Case Management system. Start logging support requests by following the steps described in [Support Requests](#) on our web page.

### Update/Migration Procedure

See [Appendix A](#)

### Install Procedure

See [Appendix B](#)

### Application Extensions

See [Appendix C](#)

### Delete Client and Delete Client Transactions

See [Appendix D](#)

### Compiere 3.2.1 Service Pack Information

See [Appendix E](#)

---

## New In Compiere 3.2

The following is a detailed description of the enhancements made available in Compiere 3.2.

### Warehouse Management

Compiere Warehouse Management

Compiere introduces Warehouse Management in 3.2. A warehouse management system, or (WMS), is a key part of the supply chain, and is used to control the movement and storage of material within a warehouse, and process the associated transactions, including shipping, receiving, putaway, and picking.

The following lists the main features added to the Warehouse Management Functionality:

- Zones and Zone Relationships
- Warehouse Management Rules Engine
- Wave Planning
- Warehouse Replenishment
- Warehouse Task Management
- Streamlined Receiving
- Directed Picking and Putaway
- Reports

### Business View Layer

Compiere Professional Edition

In 3.2 the Business View Layer enables report designers and users to access business data from an optimized reporting schema that incorporates user-friendly field names, Compiere's role-based security, and database security. Compiere 3.2 includes pre-defined business views spanning customer, vendor, product, invoice, shipment, and material receipt objects. Customers can create additional Business Views in a single step from within the Compiere system.

In 3.2, we have added a default BVL database user called 'CompiereBVL' with the same password as the Compiere user, which will contain all the business views published by the user.

**Important:** In the 3.1 release, this step was done as a setup using 'Initial BVL Setup' window. The 'Initial BVL setup' is no longer included in 3.2. For 3.1 users who have already setup their BVL using 'Initial BVL setup,' this will not be overwritten. Compiere will not create the "CompiereBVL" user in 3.2 and the initial set up will be maintained.

In 3.2, we have also added 2 sample Jasper reports called 'Customer Contact' and 'Customers and Partners' that can be used as an example to integrate Jasper reports with BVL. These reports are based on business views under the "CompiereBVL" user mentioned earlier. For users who have already setup BVL in 3.1 release, the query within the sample reports should be modified to refer to the BVL user created in 'Initial BVL Setup'. This can be done using a tool of your choice to create Jasper reports (like iReport, JasperAssistant, etc)

### New Data Dictionary Feature: Value Assignment

Compiere 3.2 provides the ability to dynamically create default field values when a new record is created (SQL, constant, preferences). In addition to this, Value Assignments allow the ability to set values after the user presses save, just before a record is saved. This could be used to create a default value without user intervention or if the user fails to define a value. Another use is to assign a certain value based on other fields. Value Assignments are basically a declarative way to define before-insert/update/delete trigger.

### Account Balance Summary

Compiere 3.2 provides the ability to store and manage account balances by user-specified granularity of summarization. By default, the Update Accounting Balances process accumulates the accounting transactions of each day for each combination of the accounting schema elements. These values are stored in the Accounting Fact Balances table, which is the source of data for all Financial reports.

Compiere provides a new screen called Balance Aggregation, which allows users to summarize accounting data by Calendar Week, Month, and Day. Choosing the option of Calendar Month will reduce the number of records in the Accounting Fact Balances table and should improve the performance of Financial reports. This summarization option can be specified up to a specific date, after which the accounting balances are accumulated daily. Note that the Balance Accumulation option of "Period of a Compiere Calendar" is not yet operational.

### Reports Enhancements

Compiere 3.2 provides the ability to zoom to a record from web generated pdf reports.

### Provision New Tenants Enhancements

Compiere 3.2 provides a consistent way of creating new tenants from self service web store, swing or professional edition User Interfaces.

---

## Login Message Broadcast system Enhancement

- Display Messages to user(s) after Login
- Display custom license information to all or selective users
- Configurable rules based, targeted message and information broadcast system

## Request Enhancements

Compiere 3.2 provides the ability to create and inquire requests from the toolbar of any document in the Web UI.

## Translation Enhancements

Compiere 3.2 provides the ability to selectively translate portions of the product.

## Additional Enhancements

Compiere Professional Edition

Compiere supports the use of the Google Chrome Browser for web user interface.

## The Web User Interface in Compiere 3.2

The following is a detailed description of what the Web user interface has to offer in Compiere 3.2.

## Web User Interface Compiere 3.2

Compiere Professional Edition

In order to get properly acquainted with the Web User Interface, please read the section on “Using the Web Application” in the user documentation.

At present, there are still some known features available in the “Java Swing” User Interface that are not yet available in Web User Interface of Compiere 3.2. Most of these features are scheduled for a future release.

The following features are currently **Not Available** in the Web User Interface. However, they are fully functional in the “Java Swing” User Interface:

The known features in the Java Swing User Interface that are not yet available in the Web User Interface include:

- Accounting Dimensions – Windows used to set up Account structure.
- Work Flow Editor – A form available from the Main Menu used to create or modify a Workflow.
- Resource & Schedule Info Windows – Info Window available from the ‘View’ menu to view Scheduled Resources.
- Resource Assignment – A Form used to schedule a resource accessed from the Assigned Resource field in a Sales Order, Project, or Expense Report.
- Personal lock – A security feature accessible from the toolbar used to lock a specific record to keep the record private. It is also used as a method to set security access rules for specific records.
- Archive Viewer – A window used to view the Archived Records. Records or Documents can be archived via the toolbar from the document viewer or automatically via a setting available in the tenant window.
- Ability to print mass shipments – A process available from the Main Menu used to print multiple shipments.
- Print from info windows – A button accessible from any Info window used to print a screen shot of the information.
- Drill down on reports – Interactivity on Reports which enables you to view a different report from a drill menu where a selected record is used.
- Ability to email documents/reports as attachment – A button available from the toolbar of any report or document that opens an e-mail dialog box with the report attached as a .pdf file allowing users to send the report via e-mail.
- Sizing / Moving of columns in grid view / Info windows – A mouse function that allows users to expand and contract columns as well as modify the column positions in the Grid view of a window or any Info Window.
- Product attribute grid – A form available from the Main Menu which allows users to select an Attribute and view a grid of which products are available with the selected attributes.

**Important:** The Firefox Browser 3.0 is recommended when using Compiere Release 3.2 with the web user interface.

When using Internet Explorer 7.0, verify the options: “Always switch to new tabs when they are created” and “A new tab in the current window” are enabled: Under Tools> Internet Options> General Tab, open the Tab settings.

## Fixed Issues for Compiere 3.2

The following is a list of the issues that have been fixed in Compiere 3.2.

Compiere Case Number	Description
10016501	The Last PO and last Invoice Price on the product Window.
10017444	Swing UI - Menu Workflow Activity Tab.
10018217	In the Replenishment Report, the process isn't including the Order Pack Qty correctly. It is ordering 1 pack too many.
10018220	Replenishment report includes: a) Products that are discontinued b) Product > Purchasing records that are discontinued The replenishment report should ignore these.
10018232	The Scheduler runs at unexpected times and slows down DB dramatically.
10018819	On a "Bank Statement", when you "Create lines from" payments, the accounting date is not retrieved from the payment.
10018998	RV_Payment UnAllocated The "UnAllocated Payments" reports displays all payments for which no allocation lines exists.
10019119	The Invoiced Quantity is incorrect when creating an Invoice from a Material Receipt of a closed Purchase Order.
10019141	Transaction support fails to work at all with EDB 8.2 on 3.0.2. When a rollback is issued the db retains the saved record. Please see the attached java class.
10019216	When creating a location for a business partner; the default country is china, which displays without the "State" field. If this is changed it to Australia, the "State" field still doesn't appear. This results in not being able to input the address.
10019250	Scheduler doesn't consider skip days.
10019271	In the BankAccount Tab of the Bank Windows, no organization is proposed on Web UI.
10019280	Lookup.run: C_Location.C_Location_ID: Loader - Too many records [45] MAX_ROWS is set at 10000 in MLookup.java Our C_Location table has more tha 12000 records.
10019460	Double allocation lines are created when the Payment and Invoice ID are set to null. The double allocation lines have also caused the wrong Open balance of the Business Partner. Running the Validate Business Partners process didn't help.
10019535	The allocation uses the transaction date of the payment for both its transaction and accounting date and so it is in the closed period and can not be completed.
10018663	Sales Rep info window, Invoices for the given Sales rep are not displayed.
10019593	Table and Column window Reference key needs to be mandatory when the reference type is Table.

## Product Enhancements for Compiere 3.2

The following is a list of the enhancement Requests that have been completed in Compiere 3.2.

Product Enhancement	Description
10016095	The product attribute pop-up window in the web UI is formatted in a not-so-ideal way. It starts with a checkbox called, "Edit Record" and a button called "Select Existing". Following are the user defined attributes. After which are a few more Compiere fields like "Guarantee Date", "Cancel", "OK". The problem is that these just wrap 3 to a row no matter what. So the first user-defined attribute is on the same line as the "Select Existing" button - They should start on a new line. Similarly an end line should follow the user-defined attributes, before the Compiere fields.
10017748	Import Invoice and Import Order do not have the ability to import a line with a charge, only products. Would like this as an enhancement.
10016879	Option to disallow negative Inventory at the warehouse level. If selected, the system will prevent the on-hand balances from being driven negative.
10019300	In the web UI, the callouts do not cascade as it does in the swing UI.
10019327	Credit Check code while preparing a shipment creates a heavy CPU load on the oracle server.

## Known Issues in the Migration Process

Warnings and Error Messages you may see during the Migration steps.

Migration Issues – Warning/Error Messages	Database	Solution
ORA-00001: unique constraint... violated	All	This is an acceptable warning message.
ORA-01408: such column list already indexed	All	This is an acceptable warning message.
ORA-01440: column to be modified must be empty to decrease precision or scale	All	This is an acceptable warning message.
ORA-02296: cannot enable	All	This is an acceptable warning message.
ORA-02275: such a referential constraint already exists	All	This is an acceptable warning message.
ALTER TABLE S_ResourceType MODIFY ChargeableQty NUMBER(10) DEFAULT NULL Failed sql statements ERROR: cannot alter type of a column used by a view or rule Detail: rule _RETURN on view rv_asset_delivery depends on column "lot" - ALTER TABLE A_Asset_Delivery ALTER Lot TYPE VARCHAR(255) , ALTER Lot SET DEFAULT NULL	EnterpriseDB	This is an acceptable warning message.
Component migration not needed Unable to get migration steps WorkerData - java.lang.NullPointerException Unable to execute postgres/oracle function scripts Failed to run function scripts sql No component migration needed	All	Always select Compiere Core when installing or migrating any additional applications.
Unable to get target result set: SELECT...FROM AD_Role WHERE Name = 'GardenWorld Admin' - java.sql.SQLException: ORA-00904: "OVERRIDERETURNPOLICY": invalid identifier Unable to get target result set: SELECT...FROM AD_Column WHERE AD_Table_ID = 783 AND ColumnName = 'R_Request_ID' - java.sql.SQLException: ORA-00904: "ISRECURSIVEFK": invalid identifier	All	Always select Compiere Core when installing or migrating any additional applications.
No Key & No Parent - Table AD_RecentItem	All	This is an acceptable warning message
While executing RUN_Setup, refreshing an existing instance =====> DB_PostgreSQL.getDataSource: DB_EnterpriseDB[null] [12] java.lang.IllegalArgumentException: DataSource with name 'CompiereDS' already exists!	EnterpriseDB	This is an acceptable warning message
While executing RUN_Setup -----> ModelValidationEngine.addClasses: GardenWorld: compiere.model.MyValidator - java.lang.ClassNotFoundException: compiere.model.MyValidator [12] -----> ModelValidationEngine.addClasses: Extended Units of Measure: org.compiere.xuom.XUOMModelValidator - java.lang.ClassNotFoundException: org.compiere.xuom.XUOMModelValidator [12]	All	This is an acceptable warning message
Error "Don't have core" when trying to install an application extension	All	Select Reinstall/Migrate for the Core component when installing new application extensions

## Known Issues in the Install Process

Warnings and Error Messages you may see during the Import steps.

Install Issues – Warning/Error Messages	Database	Solution
-----> g.a: DROP SEQUENCE T_Spool_Seq -----> g.a: ORA-02289: sequence does not exist	All	This is an acceptable warning message.
-----> DB_PostgreSQL.convertStatement: Convert error! Converted statement Number=2 (CREATE OR REPLACE VIEW ...	EnterpriseDB	This is an acceptable warning message.
-----> DB.saveError: DBExecuteError - ORA-00001: unique constraint (COMPIERE.C_REGION_NAME) violated [15] -----> MRegion.saveNewInsertSQL: Not inserted - C_Region [15] -----> ProgressPanel.publish: Unable to import Region, requires UNICODE database [15] =====> DB.executeUpdate: INSERT INTO C_Region (AD_Client_ID,AD_Org_ID,C_Country_ID,C_Region_ID,Created,CreatedBy,Description,IsActive,IsDefault,Name,Updated,UpdatedBy) VALUES (0,0,216,438,TO_DATE('2006-02-23 15:43:34','YYYY-MM-DD HH24:MI:SS'),0,'???(Miyasaki)', 'Y', 'N', '???' , TO_DATE('2006-02-	All	These are acceptable if your database is not set for Unicode.

Install Issues – Warning/Error Messages	Database	Solution
<pre>23 15:43:34,'YYYY-MM-DD HH24:MI:SS',0) [null] [15] java.sql.SQLException: ORA-00001: unique constraint (COMPIERE263.C_REGION_NAME) violated; State=23000; ErrorCode=1     at oracle.jdbc.driver.DatabaseError.throwSQLException(DatabaseError.java:125)     at oracle.jdbc.driver.T4CTTloer.processError(T4CTTloer.java:305)     at oracle.jdbc.driver.T4CTTloer.processError(T4CTTloer.java:272)</pre>		
<pre>At the very end of the install process or when manually executing utils/RUN_Support 13:07:55.094 Compiere.startup: Client lap-fr/10.104.139.177: C:\Compiere2 - Java HotSpot(TM) Client VM 1.5.0_11-b03 - Windows XP 5 .1 Service Pack 2 [15] Exception in thread "AWT-EventQueue-0" java.lang.NullPointerException     at javax.swing.plaf.basic.BasicScrollBarUI.layoutHScrollbar(BasicScrollBarUI.java:676)     at javax.swing.plaf.basic.BasicScrollBarUI.layoutContainer(BasicScrollBarUI.java:775)     at java.awt.Container.layout(Container.java:1401)     at java.awt.Container.doLayout(Container.java:1390)     at java.awt.Container.validateTree(Container.java:1473)     at java.awt.Container.validateTree(Container.java:1480)     at java.awt.Container.validate(Container.java:1448)     at javax.swing.RepaintManager.validateInvalidComponents(RepaintManager.java:379)     at javax.swing.SystemEventQueueUtilities\$ComponentWorkRequest.run(SystemEventQueue Utilities.java:113)     at java.awt.event.InvocationEvent.dispatch(InvocationEvent.java:209)     at java.awt.EventQueue.dispatchEvent(EventQueue.java:461)     at java.awt.EventDispatchThread.pumpOneEventForHierarchy(EventDispatchThread.java:24 2)     at java.awt.EventDispatchThread.pumpEventsForHierarchy(EventDispatchThread.java:163)     at java.awt.EventDispatchThread.pumpEvents(EventDispatchThread.java:157)     at java.awt.EventDispatchThread.pumpEvents(EventDispatchThread.java:149)     at java.awt.EventDispatchThread.run(EventDispatchThread.java:110)</pre>	All	No effect on the functionality. You may ignore this error.
<pre>Error after clicking Save on the RUN_Setup window =====&gt; CConnection.createConnection: jdbc:oracle:thin:@//lap-fr:1521/xe, (1) AutoCommit=true,TrxIso=READ_COMMITTED - ORA-010 17: invalid username/password; logon denied [12] -----&gt; CPreparedStatement.&lt;init&gt;: ALTER TABLE AD_System MODIFY Summary NVARCHAR2(2000) [12] java.lang.UnsupportedOperationException: No DBConnection     at org.compiere.util.DB.getConnectionRW(DB.java:228)</pre>	All	No effect on the functionality. You may ignore this error
<pre>Error installing the sample application extension XUOM Failed sql statements: ORA-00955: name is already used by an existing object - CREATE INDEX M_Product_ProductCategory ON M_Product (M_Product_Category_ID) - java.sql.SQLException: ORA-00955: name is already used by an existing object</pre>	All	This is an acceptable warning message
<pre>Error installing the sample application extension XUOM Create Views ***** Starting to create views for entity: XUOM     Created view #1 for entity: XUOM Failed sql statements &lt;&lt;ERROR: ERROR: relation "m_product_expensetype" already exists - CREATE UNIQUE INDEX M_Product_ExpenseType ON M_Product (S_ExpenseType_ID) - java.sql.SQLException: ERROR: relation "m_product_expensetype" already exists&gt;&gt; ... same error for other indexes... &lt;&lt;ERROR: ERROR: constraint "fk208_10919" for relation "m_product" already exists - ALTER TABLE M_Product ADD CONSTRAINT FK208_10919 FOREIGN KEY (C_SubscriptionType_ID) REFERENCES C_SubscriptionType (C_SubscriptionType_ID) - java.sql.SQLException: ERROR: constraint "fk208_10919" for relation "m_product" already exists&gt;&gt; ...same error for other constraints...</pre>	All	This is an acceptable warning message



## Known Issues in Compiere 3.2

Issues you may encounter using Compiere 3.2

Issue	Database	Solution
Shortcuts: Firefox 3.0 on Windows, shortcut key 'Alt-Equals' does not expand in the Compiere Web UI.	All	Open
The Ctrl+M shortcut is not working in the Business Partner window and the Product window including all Product tabs except for BOM tab.	All	Open
Report Accounting Fact Details has been renamed to Accounting Fact Details Report.	All	Open
Keyboard Shortcut: F10 (Focus on the main auto completion menu) Issue: Mouse prompt is not visible in 'Main Menu' field, so alternate key is suggested. Alternate Key: Ctrl+Alt+M.	All	Open
Keyboard Shortcut: F1 (Help) Issue: Brings up 2 help menus, Compiere's help popup and IE's help popup Menu and close button is only half visible. Alternate Key: Ctrl+Alt+H.	All	Open
Keyboard Shortcut: Alt = (Expand) Issue: Not currently working. No Alternate Key	All	Open
Keyboard shortcut in Web UI Alt =, which is used to "Expand All" is not working in windows Firefox 3.	All	Open
When the workflow or workflow node responsible is set to Organization it does not get routed to the supervisor defined for that organization. The workflow stays in a suspended status but is not designated as a task for any user to complete.	All	Open
Views information gets over-written when saving more than 4 views. (Web)	All	Open
The footer of reports generated from the web UI shows some of the JDBC connection info.	All	Open
When items are removed (moved to the left pane) in Sort order of Business View they should not appear in Format Item tab. Currently you have to remove them two times (once in each tab.)	All	Open
In Work Order and Warehouse, Org * is not a valid value. Users must pick a specific org. However, if you login and select * as the org in the Role login window, you are able to save work orders and warehouse with org *.	All	Open
Log into an instance. Use Zoom to open another instance Go back to original (do not close second instance) Go back to second instance when the log in has time out. Log back in with the same user name, password and role. Go back to first browser and you get a message that you have logged in with a different role (this is not accurate) and to log off. When you log off you cannot log back in as you do not get a db connection (language field is blank.) You have to reload the browser	All	Open
The implementation of trees in the Web UI is not completed as of the 3.2 release.	All	Open
Chrome pop-ups: When you run a report using chrome, the report is opened in a new window and the new window is located at the bottom of the screen.	All	Open
Clear Browser cache before opening Compiere in the Web UI. All Web UI users need to clear their browser cache and reload the URL before re-starting Compiere 3.2 after migration.	All	Open
View customizations not migrated to Release 3.2. Added one user-maintained column as a view component and modified from clause of the view and marked as a customization, but these changes from 3.1 were not migrated to 3.2. They had been migrated to 3.1 from 3.0.3. Occurred in Production Compiere instance with view C_PaySelection_Check_v.	All	Open
In some instances when generating a Financial Report in the WebUI a print format called Create Report will be generated. Once generated it is then used in every Financial Report. If you delete the print format called Create Report for the tenant and then the correct print format will either be used for your Financial Reports.	All	Open
The Zone window: cannot add Locator (child tab) in grid view mode.	All	Open
BVL does not work on EnterpriseDB	EDB	Open

For a current list of open issues please query the list of public requests from our request system <http://www.compiere.com/support/support-requests.php>.

---

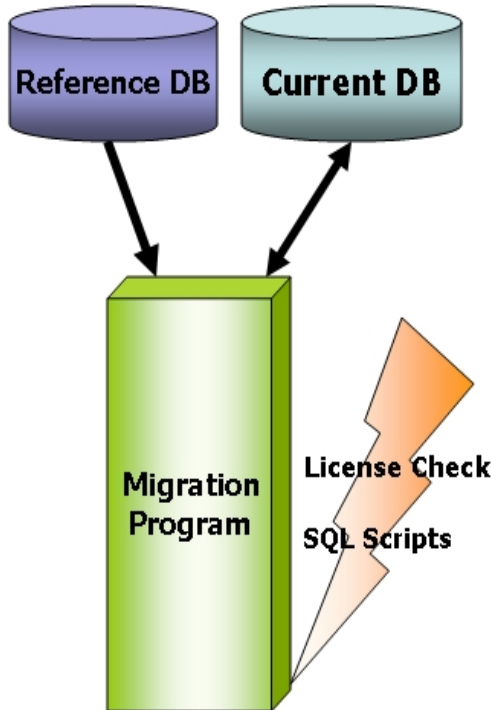
## **Appendix A**

### **Compiere 3.2 – Migration Instructions**

## Compiere 3.2 Migration Instructions

### Prerequisites

- A valid Support contract
- Sun Java JDK 6 (SDK) – Update 5 or later (not just JRE)
- Database Oracle XE, Oracle 10gR2, Oracle 11g or EnterpriseDB Postgres Plus Advanced Server 8.3.



### Migration

The Compiere Migration Management solution allows the following:

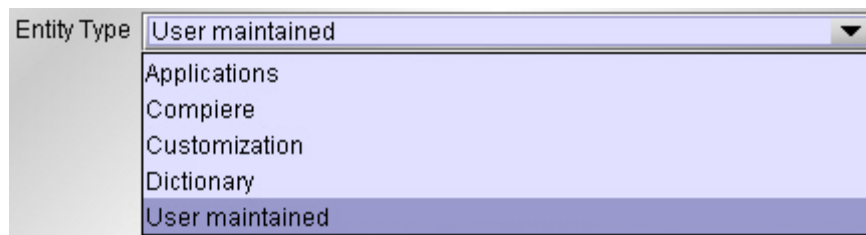
- Migrate from any release directly to Compiere 3.2.

**Information:** This is an optional convenience service. A skilled DBA monitoring SVN changes and/or with the help of a change management system can do this as all scripts used are available in SVN. Another alternative are EAI tools.

The added service is the packaging and a database health check.

### Preserving Customizations

Compiere will not modify any customizations - as long as the customizations are marked appropriately! By default, all added records in the dictionary will have the entity type "User Maintained":



- In the Change Audit window, mark the changes as Customizations before running the migration.

**Tip:** Alternatively, changes may be applied manually.

- Before performing the migration, run it in the test mode to ensure all customizations will be preserved.

### Migration Steps

Migration Consists of the Following steps:

- Preparation
- Test Mode
- Migrate to a New Release
- Post Migration Steps

---

## Preparation

Use the following steps to prepare for the Migration:

- Server needs to have access to the Internet.
- Stop the application server by executing `utils/RUN_Server2Stop`
- Backup the database
- If you are running EnterpriseDB 8.2 or older you must upgrade to EnterpriseDB Postgres Plus Advanced Server 8.3
- Rename `COMPIERE_HOME/jboss` directory
- Delete `COMPIERE_HOME/data/compiere_'CPRO'.car` file
- Delete `COMPIERE_HOME/data/compiere_'XUOM'.car` file

## Test Mode (optional)

First, run the Migration Program in Test mode. This allows the ability to evaluate the actions taken when running it against the database. Please note that the first step (resolve ID conflicts) will not show the correct future IDs in test mode.

If the program marks certain wanted **tables** for deletion, then create the table in the data dictionary (Window Table/Column) with the Entity Type *User* or *Application*.

If the program marks certain wanted **columns** for deletion, make sure that the column has the Entity Type *User* or *Application*. If the wanted column has the Entity Type Data Dictionary or Compiere and it is marked for deletion, then copy it under another name and mark the new column as *Custom* or *Application*.

The same applies to windows, tabs, fields, etc.

Mandatory User or Application Columns must have a default value defined in the database, e.g. `ALTER TABLE someTable MODIFY (myColumn DEFAULT 'myDefault')`, otherwise adding new records will result in an error.

Check List:

- Server has HTTP (port 80) access to the Internet
- Compiere web store Asset - Support Contract

System Operation Steps:

- Resolve ID Conflicts from Customizations/Extensions
- Synchronize Data Structure (Table/Column/Index/Constraints/..)
- Synchronize Data Content

## Migrate to a New Release

Use the following steps on the Application Server box for migrating to the new release:


- 1) Be sure to delete or rename the existing `jboss` subdirectory (due to different JBoss version and configuration files.) Download and unzip/untar the distribution file, (e.g. `Compiere_3XX.X.zip`.)

**Tip:** It is also possible to extract the distribution file into a new directory and copy your configuration files. Then change the **COMPIERE\_HOME** environment variable to the new directory.


- 2) Execute **RUN\_setup**. Verify all your environment settings and click Save to continue. If you get any errors in the parameters validation, you'll see a red icon right next to the parameter with the problem; make the required changes, click Test to run the validation again and then click Save to continue.

**Compiere Server Setup - Release 3.2.0\_Beta**

File Help

Java Home   


Java VM

Compiere Home   

KeyStore Password

**Application Server**

Server Type

Deployment   

JNP Port

Web Port

SSL

**Database Server**

Database Type

Database Name

Database Search

Database Port

System Password

Database User




Database Password

**Mail Server**

Admin Email

Mail User

Mail Password

Ok

3) The Compiere Public License Opens. Click "Yes, I Understand and Accept" to continue.

**Compiere - License Agreement**

## COMPIERE PUBLIC LICENSE

**Version 1.3**

Contact [Compiere](#) for licensing alternatives.

### Preamble

BY INSTALLING OR USING THE SOFTWARE PROVIDED TO YOU BY COMPIERE, INC. ("SOFTWARE"), YOU ARE AGREEING ON BEHALF OF YOURSELF OR THE ENTITY LICENSING THE SOFTWARE ("CUSTOMER") THAT CUSTOMER WILL BE BOUND BY AND IS BECOMING A PARTY TO THE LICENSE AGREEMENTS REFERRED TO HEREIN AND THAT YOU HAVE THE AUTHORITY TO BIND THE ENTITY LICENSING THE SOFTWARE. IF CUSTOMER DOES NOT AGREE TO ALL OF THE TERMS OF THE REFERENCED LICENSE AGREEMENTS, DO NOT INSTALL THE SOFTWARE. CUSTOMER HAS NOT BECOME A LICENSEE OF, AND IS NOT AUTHORIZED TO USE THE SOFTWARE UNLESS AND UNTIL IT HAS AGREED TO BE BOUND BY THE TERMS OF THE LICENSE AGREEMENTS REFERRED TO HEREIN. THE "EFFECTIVE DATE" FOR THIS AGREEMENT SHALL BE THE DAY CUSTOMER INSTALLS THE SOFTWARE. The Software is licensed under the GNU General Public License (GPL), Version 2, except that certain software packaged with the Software (the

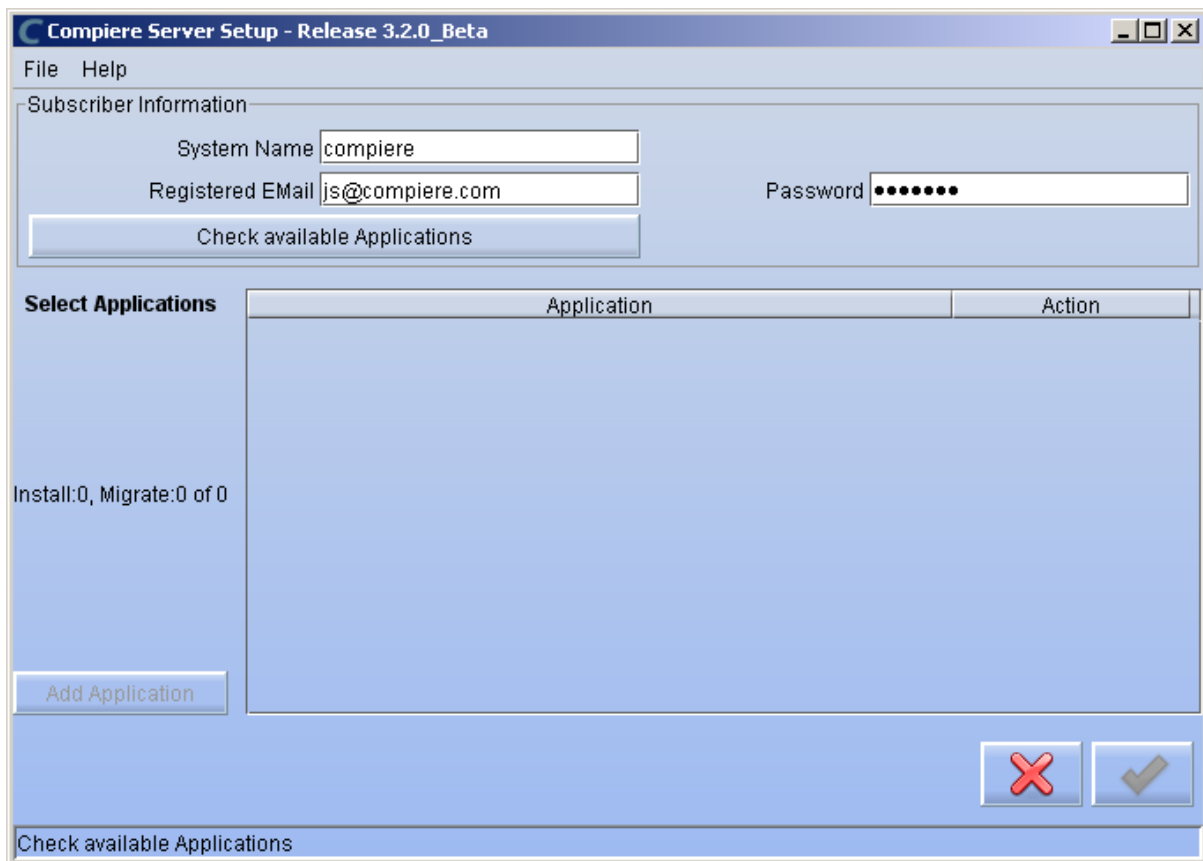
Do you accept the License ?  No  Yes, I Understand and Accept

- 4) The following prompt will display describing your new Security Key. Click 'Ok' to continue.



- 5) The Next step is to provide the Subscriber Information. Current customers should provide the subscriber information (System Name, Email and Password) exactly as it was registered in the Compiere Web Store to get a complete list of applications.

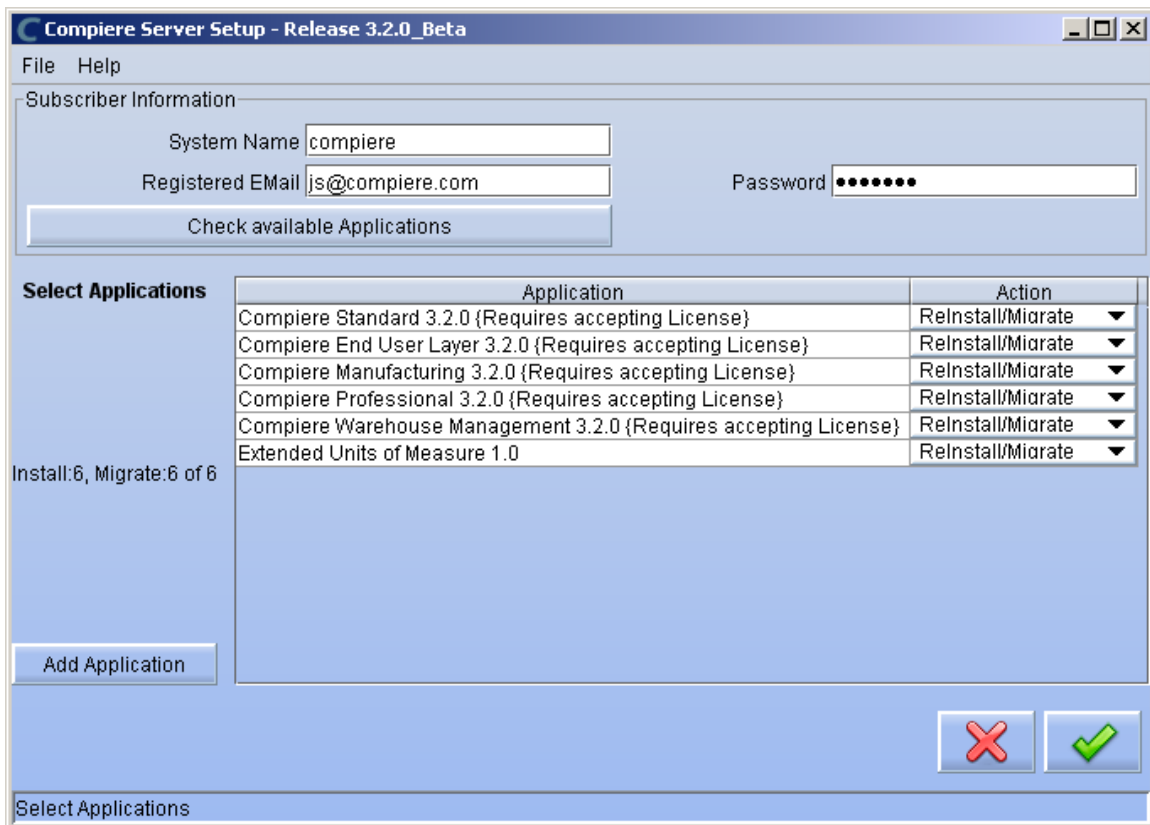
Click Check Available Applications to get a list of applications that are available to be installed.



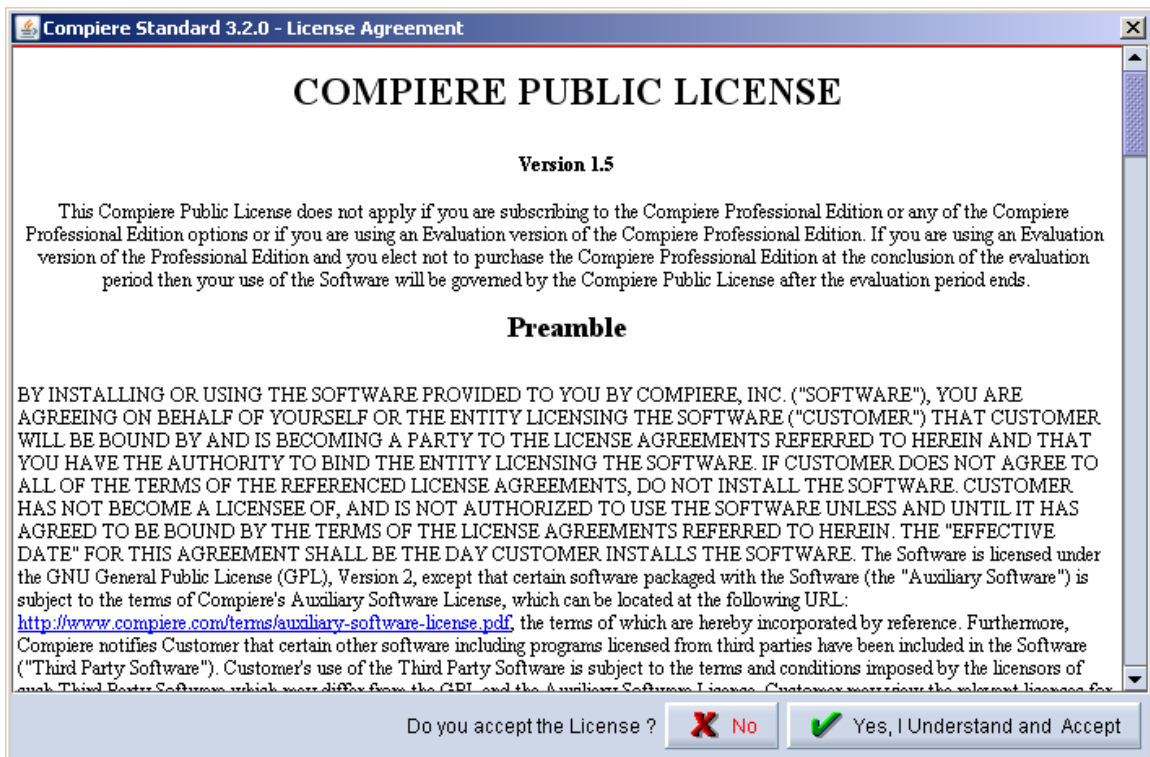
**Note:** To install additional applications once you have installed or migrated to the latest Compiere Core version, you must select Compiere Core plus any additional applications to install, and then run Migration.

- 6) Select the applications that you want to migrate and select the action **Reinstall/Migrate**. Compiere Core 3.0 is the main application that must always be installed or migrated to the latest release, but you also may choose additional applications provided by Compiere or any of our authorized partners.

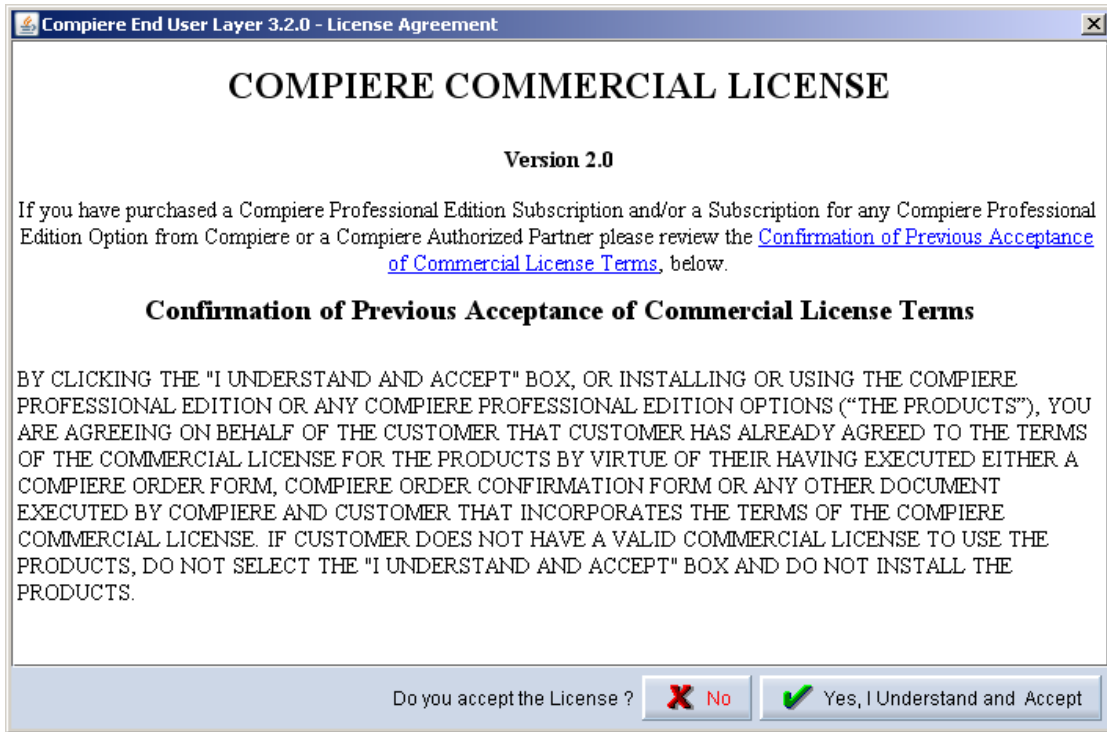
**Tip:** If you do not wish to install or migrate any of the applications listed, be sure to change the action to – None- To install new applications change the action to New Install



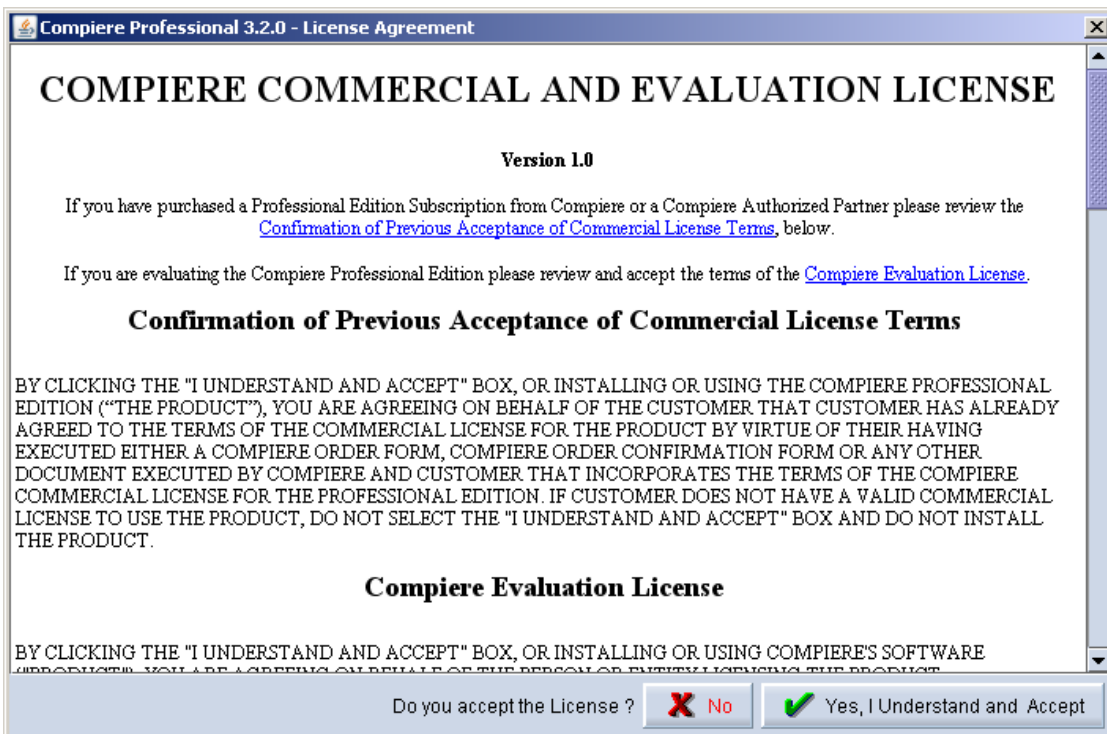
- 7) Next, read and accept the Compiere Public License agreement.  
**Hint:** You might get more than one license agreement, depending on the applications that you are installing. Notice that XUOM is a sample application extension



- 8) If you are installing Compiere Professional, you will receive a Commercial license agreement. Please read and accept the license agreement, in order to continue.  
**Hint:** You might get more than one license agreement, depending on the applications that you are installing.

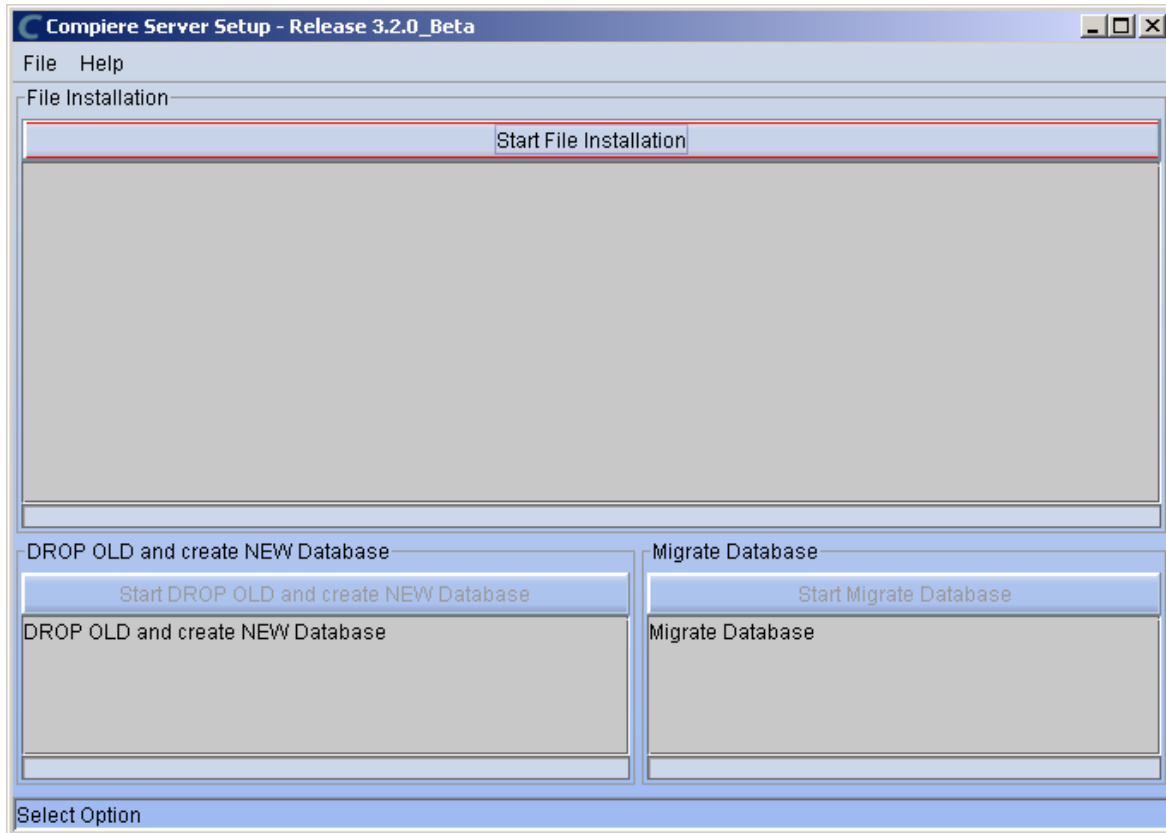


- 9) If you are installing Compiere Professional, you will also receive a Commercial and Evaluation license agreement. Please read and accept the license agreement, in order to continue.  
**Hint:** You might get more than one license agreement, depending on the applications that you are installing.

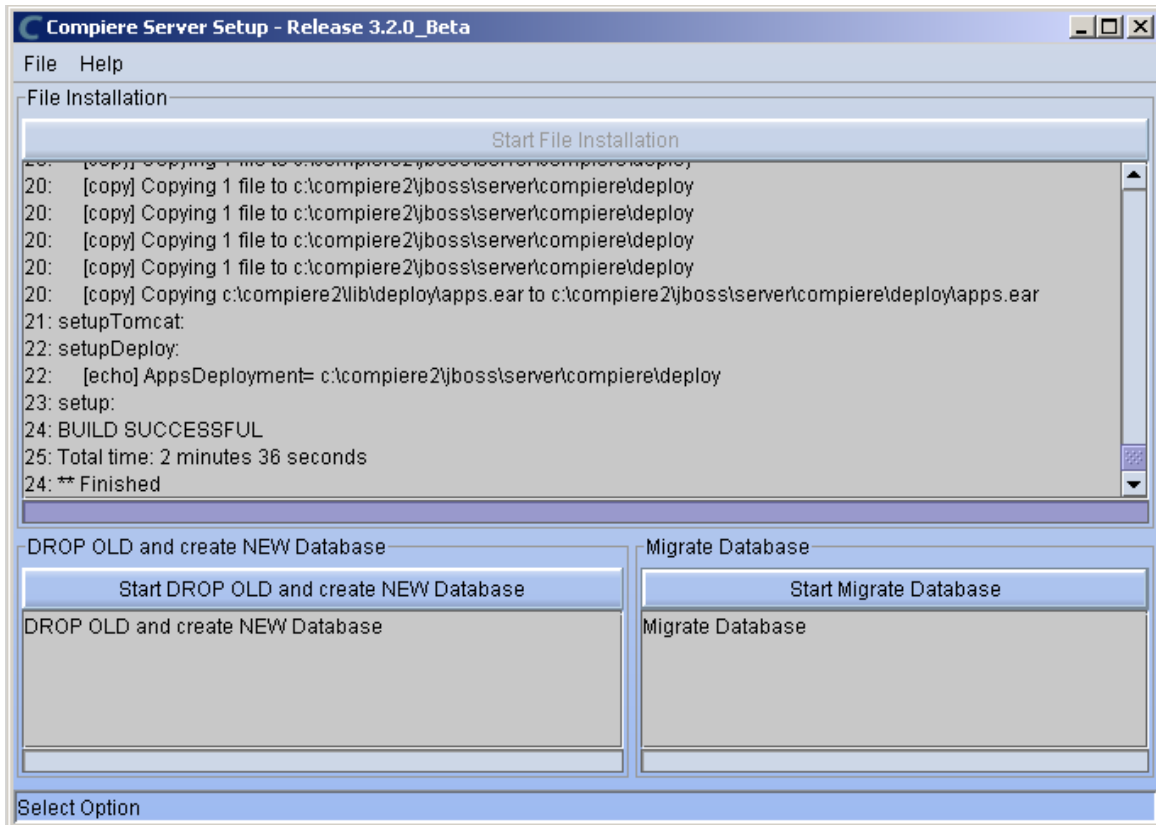




10) Click on Start File Installation

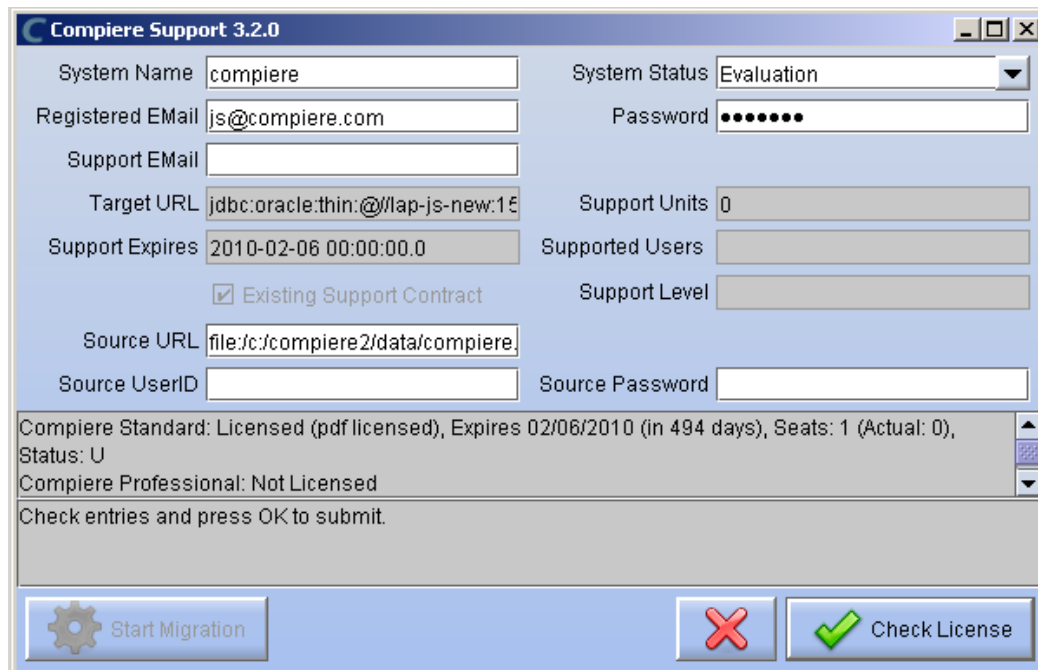


11) When the File Installation has completed click on Start Migrate Database.



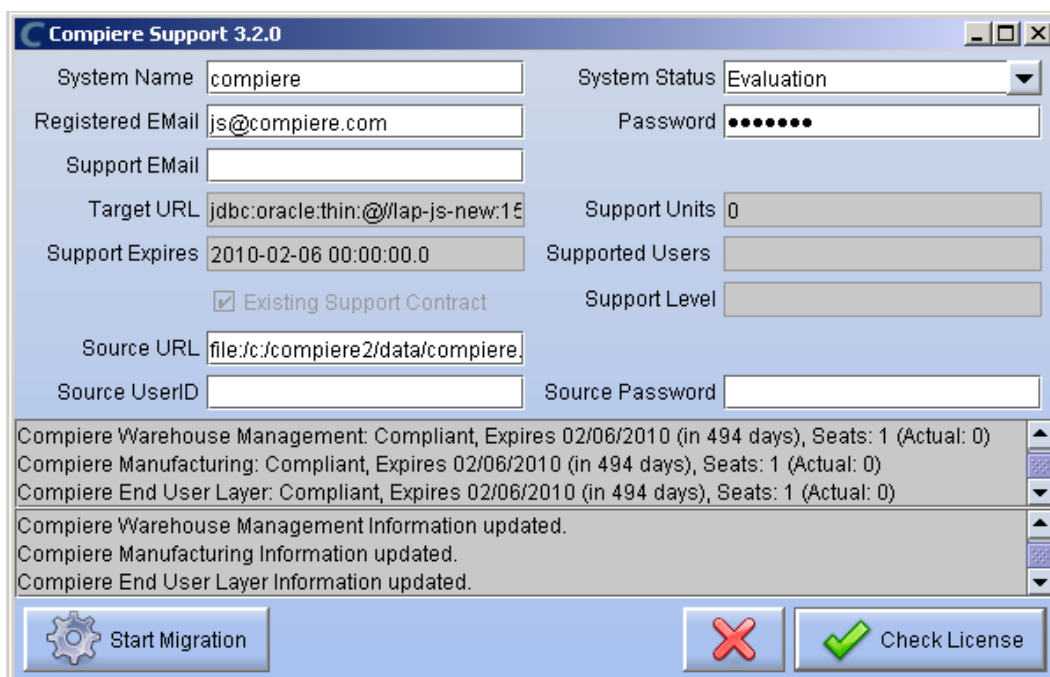
12) Provide the following information exactly as it was registered in the Compiere Web store and click Check License to validate your asset information (Note: This information may already be populated if it was entered in the system window)

- System Name
- Registered Email
- Password

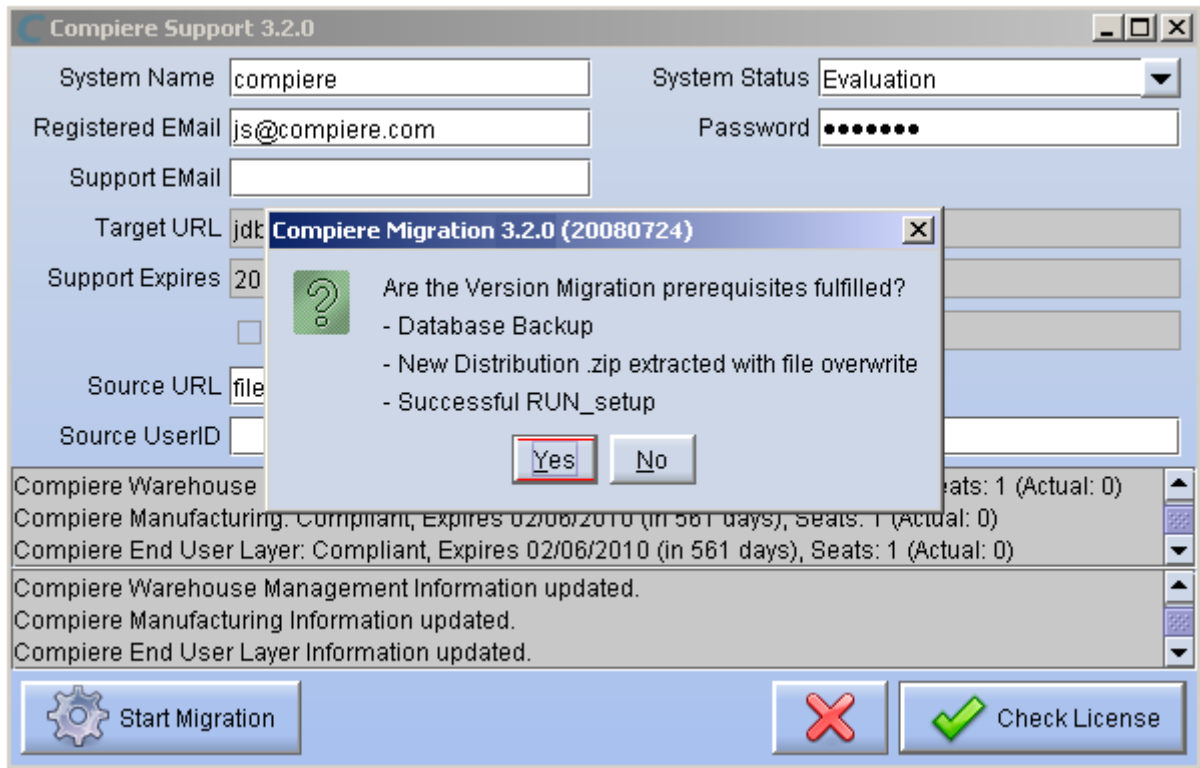


**Tip:** If you get the “Core Invalid” error after selecting the ‘Check License’ button, that is an indication that you did not select the appropriate action for the Core component in step #5. In this case, Exit the setup and support windows and execute RUN\_setup again selecting the Core plus any other components to install.

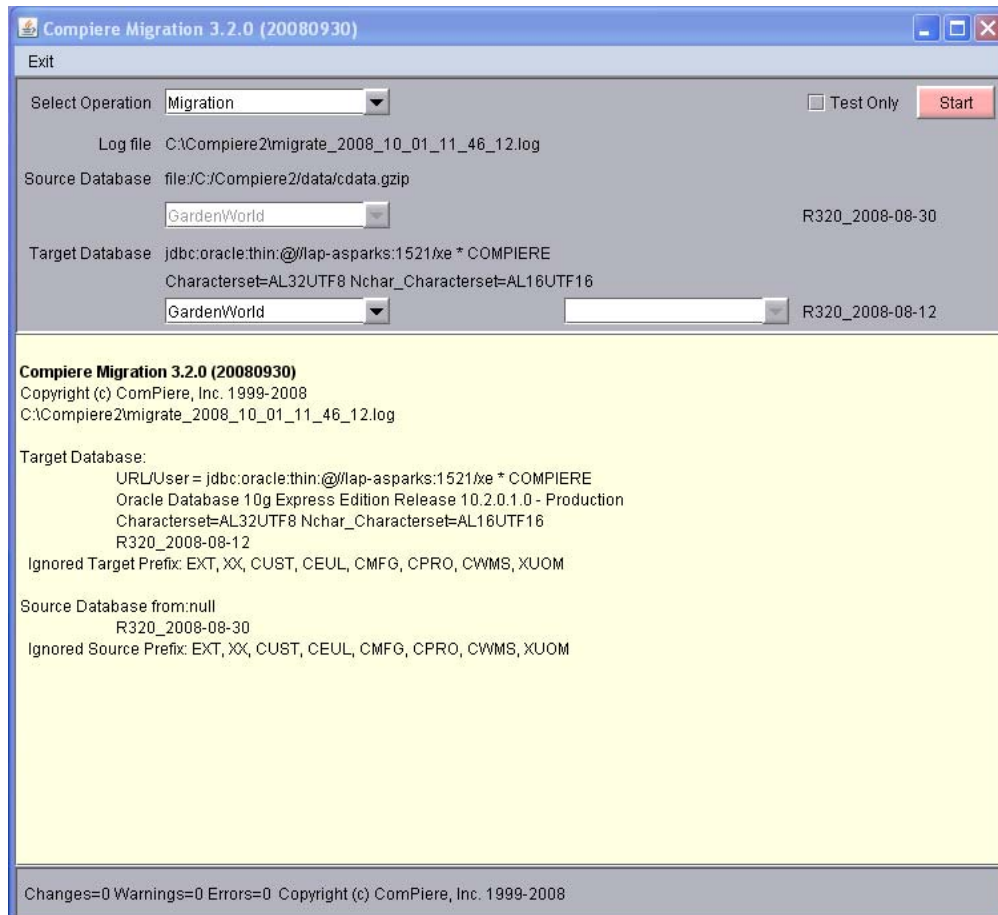
13) Click on “Start Migration”.



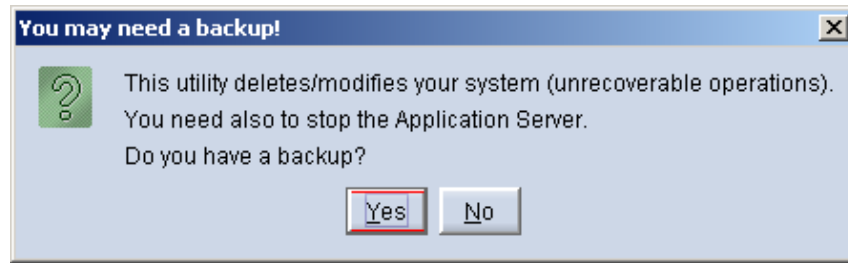
14) At the Compiere Version Migration Prompt, click “Yes” to proceed with the Migration.



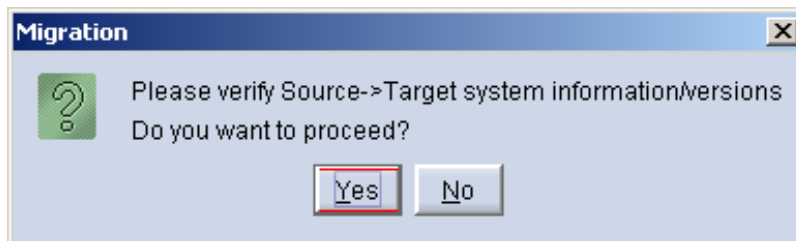
15) Unselect the “Test Only” option, and click Start.



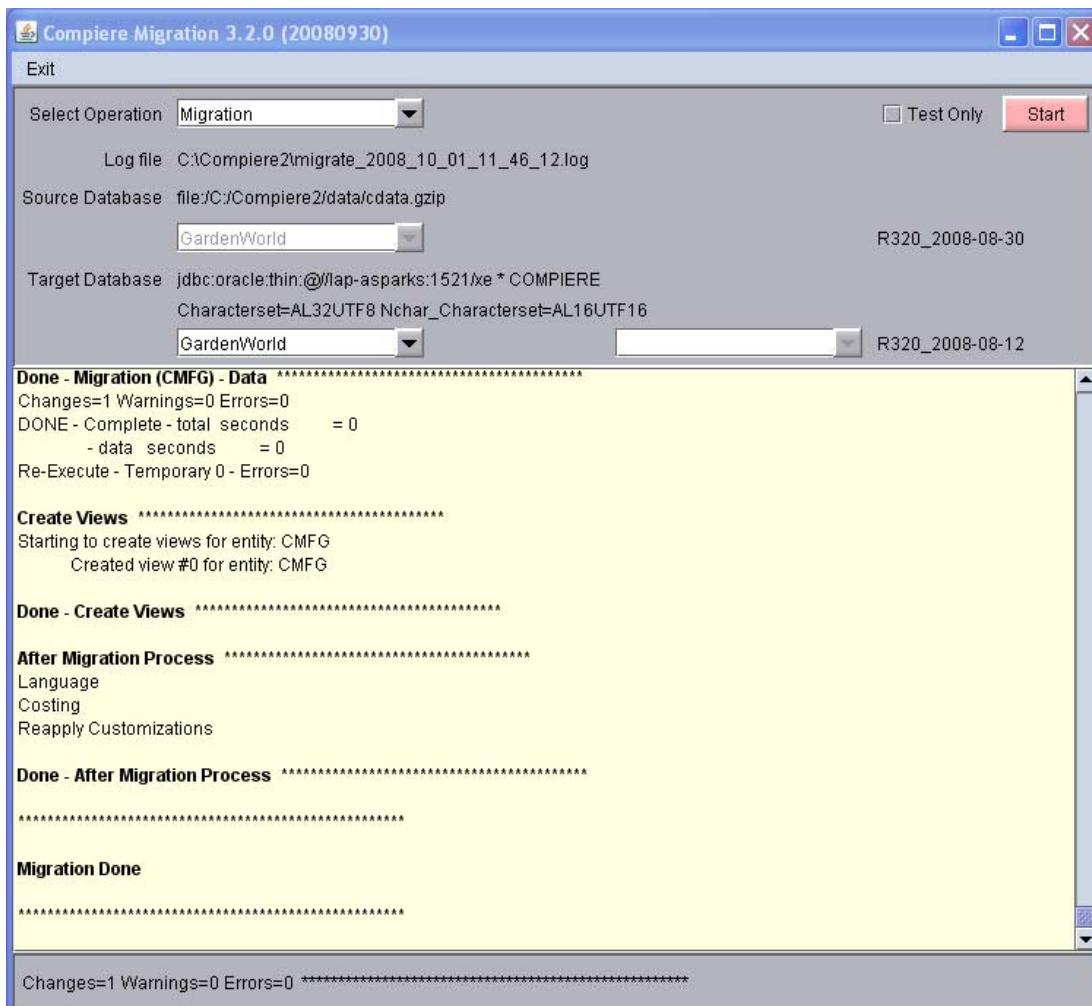
16) Confirm that you have a current back up of your database



17) Confirm that the Source and Target database versions from the Compiere Version Migration window are correct.



18) Verify that the migration finish with no errors and the message “**After Migration - DONE**” is displayed. In case you get any errors, please be sure to review the list of known issues listed in this document before logging a service request.



19) If you have a Compiere Professional Edition license, execute **utils/RUN\_Support** and click “Check License” to activate your license.

**Tip:** There is no need to click the start migration button.

Compiere Support 3.2.0

System Name: compiere System Status: Evaluation

Registered EMail: js@compiere.com Password: .....

Support EMail:

Target URL: jdbc:oracle:thin:@//lap-js-new:1E Support Units: 0

Support Expires: 2010-02-06 00:00:00.0 Supported Users:

Existing Support Contract Support Level:

Source URL: file:c:/compiere2/data/compiere

Source UserID: Source Password:

Compiere Standard: Licensed (pdf licensed), Expires 02/06/2010 (in 494 days), Seats: 1 (Actual: 0), Status: U

Compiere Professional: Not Licensed

Check entries and press OK to submit.

Start Migration X Check License

20) After you have pressed the Check License button you should be able to see if your Professional License has been activated.

Compiere Support 3.2.0

System Name: compiere System Status: Evaluation

Registered EMail: js@compiere.com Password: .....

Support EMail:

Target URL: jdbc:oracle:thin:@//lap-js-new:1E Support Units: 0

Support Expires: 2010-02-06 00:00:00.0 Supported Users:

Existing Support Contract Support Level:

Source URL: file:c:/compiere2/data/compiere

Source UserID: Source Password:

Compiere Warehouse Management: Compliant, Expires 02/06/2010 (in 494 days), Seats: 1 (Actual: 0)

Compiere Manufacturing: Compliant, Expires 02/06/2010 (in 494 days), Seats: 1 (Actual: 0)

Compiere End User Layer: Compliant, Expires 02/06/2010 (in 494 days), Seats: 1 (Actual: 0)

Compiere Warehouse Management Information updated.

Compiere Manufacturing Information updated.

Compiere End User Layer Information updated.

Start Migration X Check License

21) After Compiere Professional license has been updated you may click the “X” to close the window.

**Hint:** It is NOT necessary to click the Start Migration at this point.

22) To start Compiere in the Web UI after migration, it is required that all Web UI users clear their browser cache first.

**Note:** After migration, (re-) apply the language packs when needed.

---

## Post Migration Steps for RMA/RTV

This step is only relevant if you plan to use the new returns functionality and you are migrating from 2.6.3 or older.

Compiere now has explicit return transactions. We discontinued the previously seeded "Return Material" functionality.

In the "Document Type" window you need to do the following for every Tenant/Client:

### 1) Delete or de-activate the document types

- Return Material
- MM Customer Return  
*Hint:* This is discontinued functionality

If you choose to deactivate the obsolete document types (as opposed to deleting them), please rename the document type 'MM Customer Return' to an alternate name (For eg., ' \*\* MM Customer Return \*\* Do Not Use \*\*') so you can successfully create the new document types detailed below.

### 2) Create Return Document Types

- MM Vendor Return
  - Copy "MM Receipt" and set Name
  - Select Return Transaction
  - De-Select Counter Document flags
  - Optionally select Confirmations
- Vendor RMA
  - Copy "Purchase Order" and set Name
  - Select Return Transaction
  - De-Select Counter Document flags
- MM Customer Return
  - Copy "MM Shipment" and set Name
  - Select Return Transaction
  - De-Select Counter Document flags
  - Optionally create a special Document Sequence and or Confirmations
- Customer RMA (Copy Standard Order)
  - Copy "Standard Order" and set Name
  - Select Return Transaction
  - De-Select Counter Document flags
  - Select AR Credit Memo for Invoice Document Type
  - Select the created MM Customer Return for Shipment Document Type
  - Optionally create a special Document Sequence

Unfortunately, we cannot do the above steps automatically as this is configuration specific user data.

**Tip:** For an example of a set-up, please check GardenWorld in a fresh install or in a newly created Tenant.

---

## **Appendix B**

### **Compiere 3.2 – Installation Instructions**

---

## Compiere 3.2 Installation Instructions

This is for a new installation of Compiere. If you already have installed a previous version of Compiere, please refer to the Migration instructions.

### Prerequisites

- Database Oracle XE, Oracle 10gR2, Oracle 11g or EnterpriseDB Postgres Plus Advanced Server 8.3.  
**Important:** It is mandatory to use a Unicode character set
- Database approved Linux Operating System, Windows 2003 or Windows XP
- Disk Space: > 5 GB (includes database)
- Swap Space: > 1GB
- Memory: > 512 MB - Recommended: > 1 GB
- TCP/IP connection
- Network setup with DNS server and a domain.  
**Tip:** Do not use IP addresses.
- Internet access

**Update:** Compiere 3.2 now includes version 4.2.3 of JBoss Application Server.

For more details please see the [JBoss release notes](#).

**Hint:** Notice that the screenshots in this document refer to the installation on Windows, but the process is the same for Linux, except for the paths (e.g. C:\Compiere2 vs. /Compiere2) and the extension of the scripts (.bat vs. .sh)

### Database Installation

Install Database – For the instructions on how to install Oracle XE and EnterpriseDB on Windows and Linux please use the install guide on the Compiere website <http://www.compiere.org/support/installation.php>.

The JDBC driver for EnterpriseDB has been updated to the version that ships with Postgres Plus Advanced Server 8.3.

### Java Installation

1. Download and install [Sun Java JDK 6](#) (SDK), update 5 or higher.  
**Important:** The Compiere Server requires the JDK (not just JRE).

### Download Compiere

2. Install /Setup Compiere Server (this includes the Client as well)
  - 1) Download the current version of Compiere: [Web Store](#) (for current customers) or free [Community Edition](#).
  - 2) Extract the .zip file. The steps shown assume that you extract to the root directory, resulting in a COMPIERE\_HOME of C:\Compiere2 in Windows or /Compiere2 in Linux.
  - 3) Verify that the bin directory for your database executables is included in the PATH. Also, if using Oracle XE on Linux, run \$ORACLE\_HOME/bin/oracle\_env.sh.

To update the PATH in Windows, right click on My Computer and choose Properties. Then move to the advanced tab and click on Environment Variables. Find the PATH variable and click Edit.

- 4) Verify that the path to the JAVA\_HOME is set up in the Environment Variables.

To update the JAVA\_HOME in Windows, right click on My Computer and choose Properties. Then move to the advanced tab and click on Environment Variables. Find the JAVA\_HOME variable and click Edit.

- 5) Execute the script \$COMPIERE\_HOME/RUN\_Setup.

**Tip:** if the following window does not display, please ensure that the following are updated.

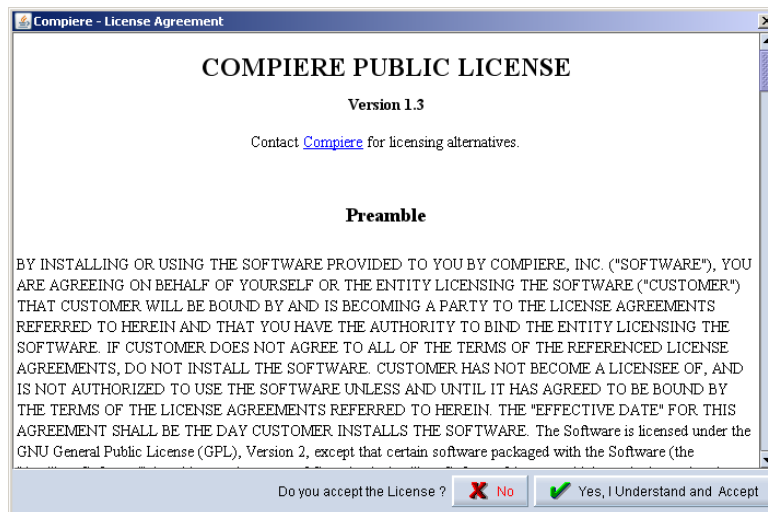
- Add the bin folder where you have installed JDK 1.6 at the beginning of the **PATH** system environment variable.
- Set the JAVA\_HOME system variable to the location of your java installation (e.g., 'C:\Program Files\Java\jdk1.6.0\_05')
- Set the COMPIERE\_HOME system variable to the path of your Compiere installation (e.g., 'C:\Compiere2')



- 6) Select Database Type Oracle XE, Oracle (for Standard or Enterprise Editions) or PostgreSQL (for EnterpriseDB).
- 7) For System Password, enter the System database User password.
- 8) For Database Password, enter the Compiere database user password, (e.g. 'compiere')
- 9) For Server Names, i.e., Application, Database and Mail, use the DNS name of the server. **Hint:** Do not use localhost (127.0.0.1) or IP addresses.

- 10) Enter or update any other parameters as necessary.
- 11) Select the Help button, for information on any field.
- 12) Select the Test button to check the parameters. **Tip:** The parameters will only save after they have been verified.
- 13) If an entry is unverifiable, it will display with a red X. Correct the entry and re-select Test.
- 14) Once all fields are verified, click the Save button to proceed.

- 15) The Compiere Public License Opens. Click “Yes, I understand and Accept” to continue.



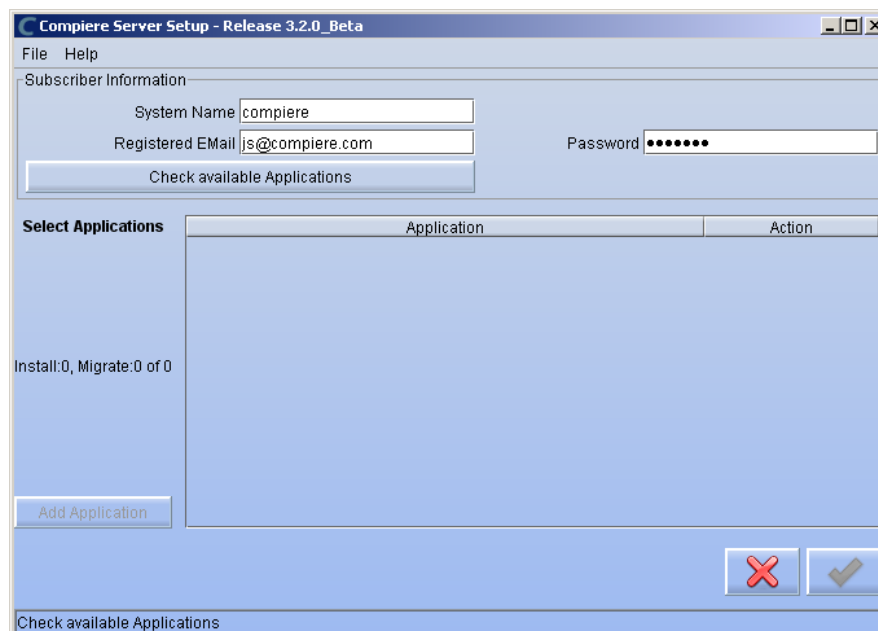
- 16) The following prompt will display describing your new Security Key. Click 'Ok' to continue.



- 17) The Next step is to provide the Subscriber Information. Current customers should provide the subscriber information (System Name, Email and Password) exactly as it was registered in the Compiere Web Store to get a complete list of applications.

Click Check Available Applications to get a list of applications that are available to be installed.

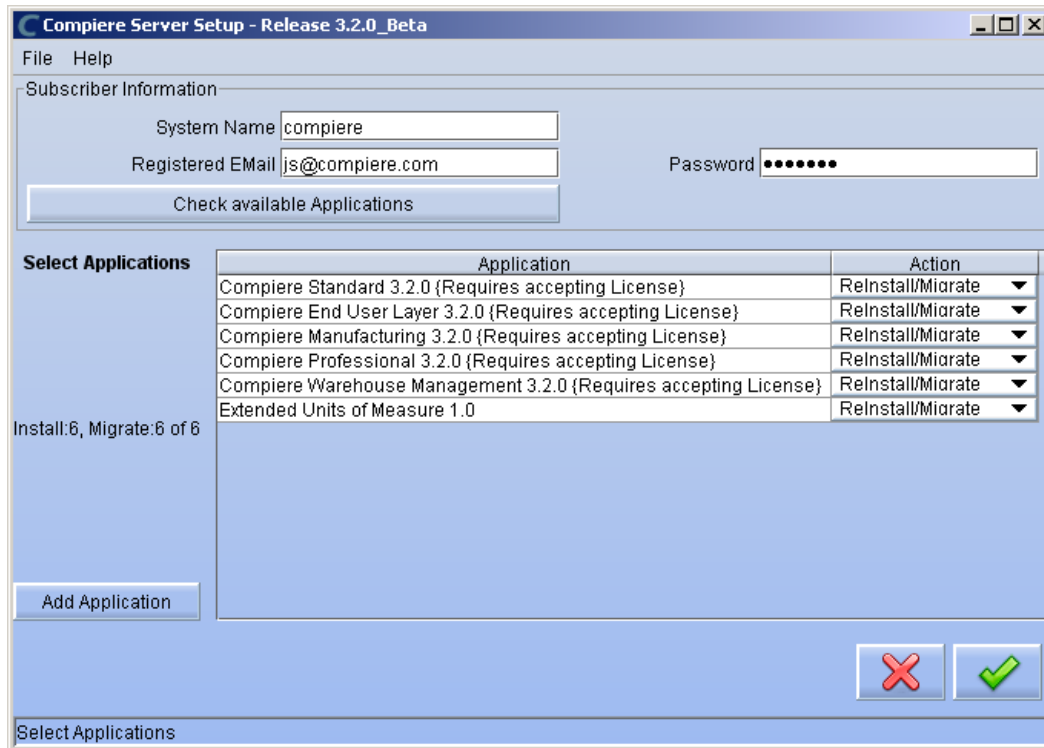
**Tip:** Community Edition users may leave the fields blank and click “Check available components” to install the Community Edition.



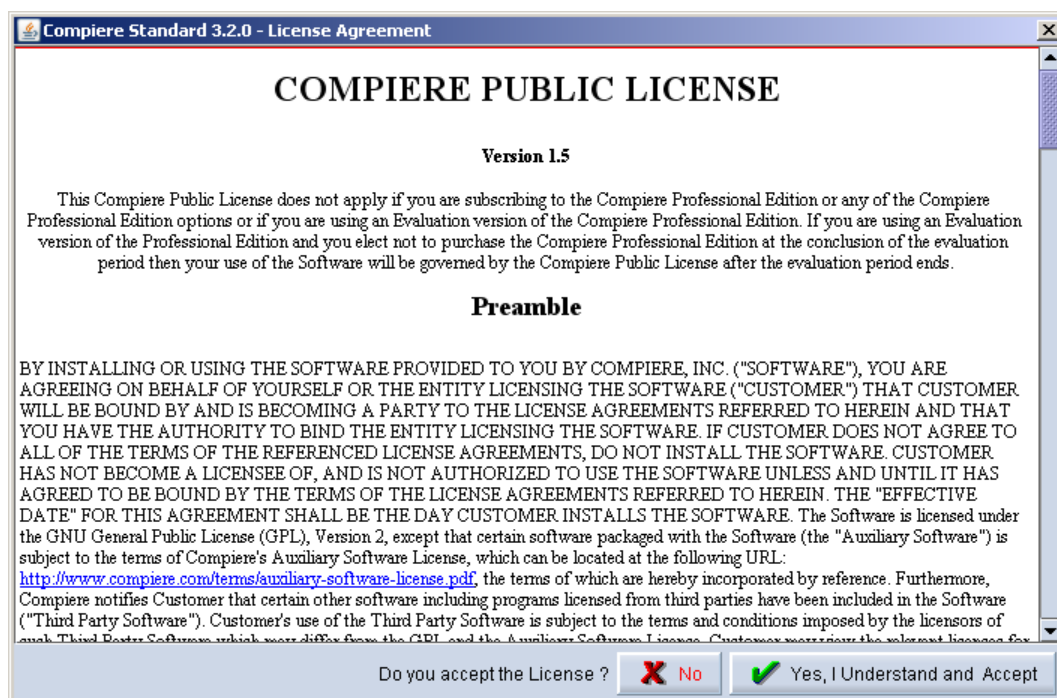
- 18) Select the applications that you would like to install. You can include additional applications by using the button Add Application.

By default all available applications will be installed. If you do not wish to install one of them you should change the action field from "New Install" to "-None-". Notice that Compiere Core is a *Mandatory Prerequisite* and must be selected.

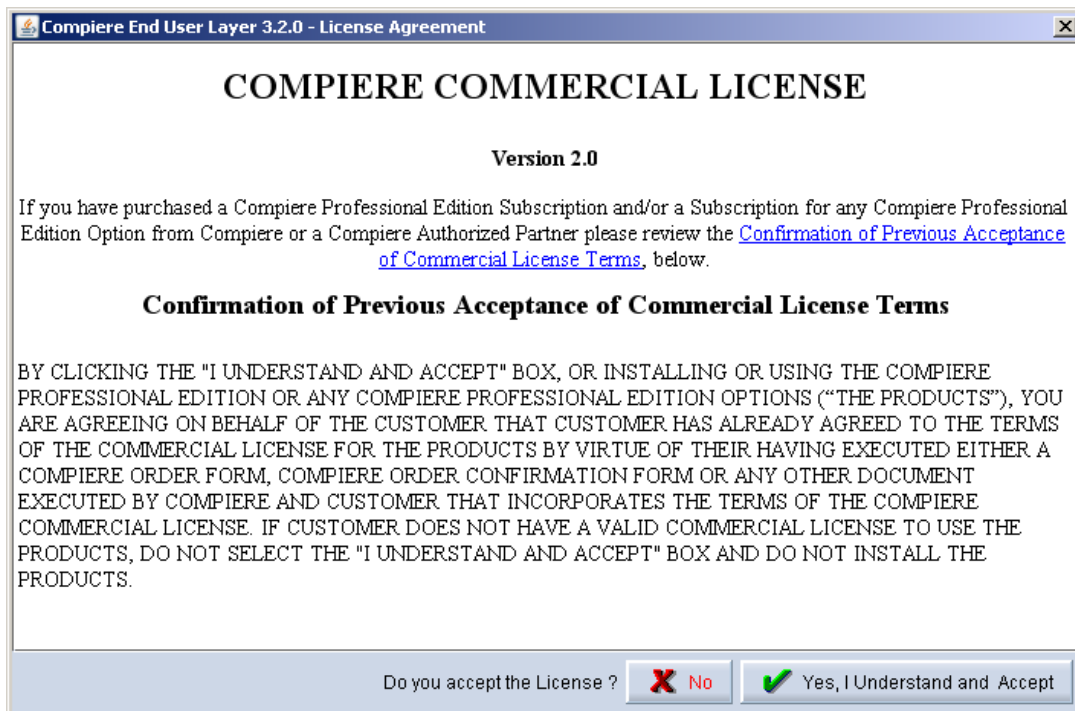
Select the OK button to continue



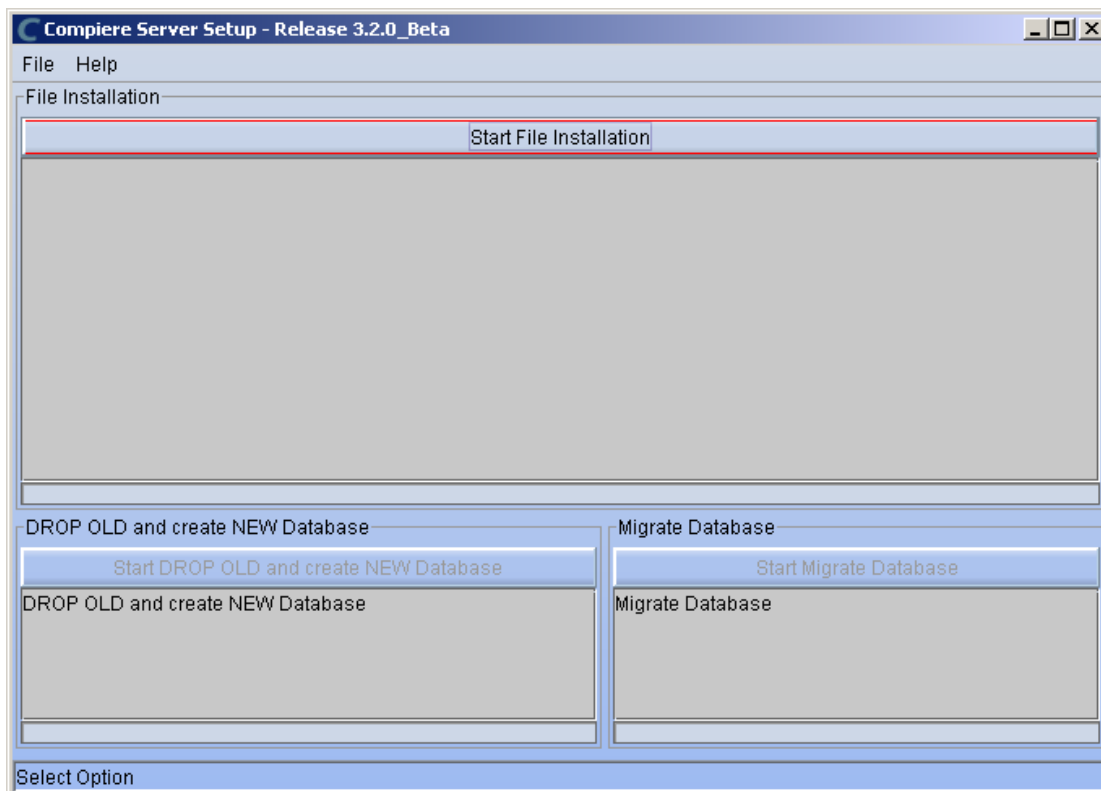
- 19) Next, read and accept the Compiere Public License agreement.  
**Hint:** You might get more than one license agreement, depending on the applications that you are installing.



- 20) Then read and accept the Compiere Commercial License agreement.  
**Hint:** You might get more than one license agreement, depending on the applications that you are installing.



- 21) After accepting the license agreement the following window will display:

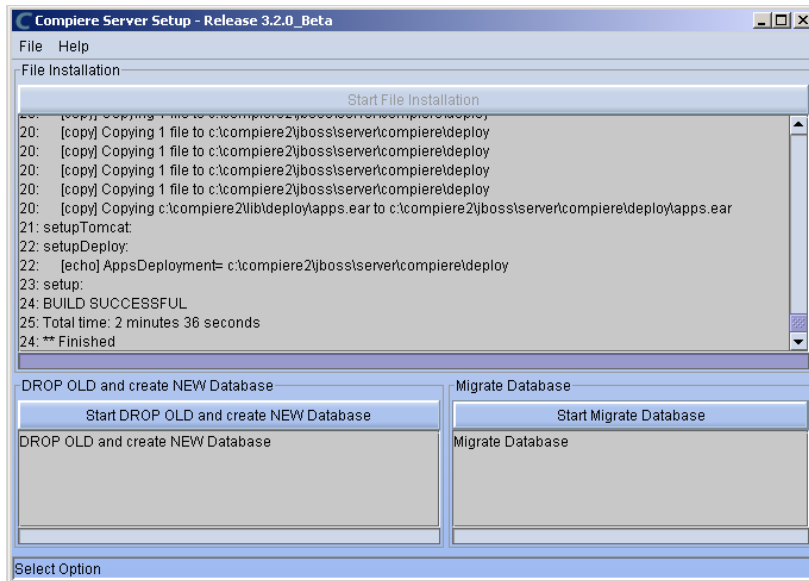


- 22) Select Start File Installation.

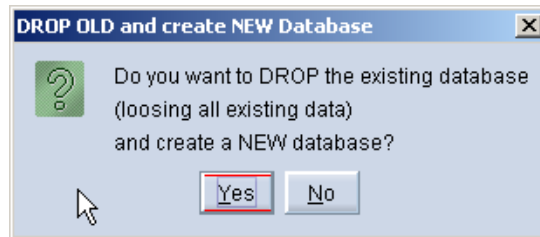
**Important:** At this point, you must be connected to the internet to continue or the installation will not succeed.

23) Once the file installation is complete, select Start Create New Database.

**Note:** If you already have a Compiere database in your system, you will be presented with a split panel after 'Start Server Install'. Click the left panel (Start DROP OLD and create NEW Database) if you want to replace the existing database with the new database.

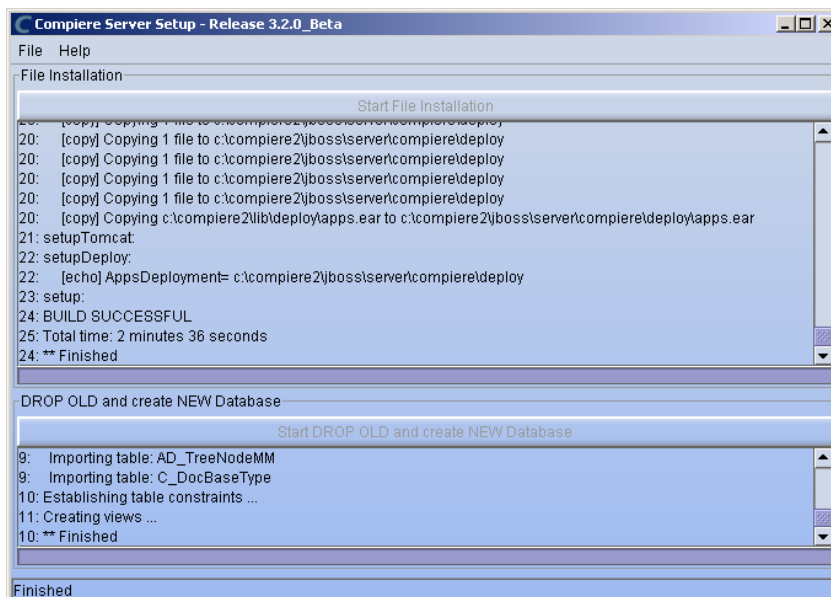


24) At the prompt select 'Yes' to Drop the existing Database and create a new database.



**Warning:** If you choose to replace the existing database, all data in the existing database will be removed.

25) Verify that you see a '10: \*\* Finished' message at the end of this step. Then a new window should pop-up to do the license validation.



26) The Compiere Support window opens. Complete the necessary fields in order to validate your assets.

**Hint:** If you only intend to use the Community Edition of Compiere 3.0, you may skip the following steps and go to the Application Server section.

**Important:** For customers with a valid support contract with Compiere, this is a required step to ensure that the features associated with the support level are enabled. If you are a customer and do not have a web store login, please contact your system administrator or Compiere Support first. If you are not a customer and would like to obtain a trial license for the Professional Edition, please [Contact Us](#) and request the files for the Professional Edition.

27) Provide the following information exactly as it was registered in the Compiere Web store and click Check License to validate your asset information.

- System Name (name provided in the web store registration)
- Registered Email (email address provided in the web store registration)
- Password (web store password)

Compiere Support 3.2.0

System Name	compiere	System Status	Evaluation
Registered Email	js@compiere.com	Password	.....
Support EMail			
Target URL	jdbc:oracle:thin:@//lap-js-new:15	Support Units	0
Support Expires	2010-02-06 00:00:00.0	Supported Users	
	<input checked="" type="checkbox"/> Existing Support Contract	Support Level	
Source URL	file:./c:/compiere2/data/compiere		
Source UserID		Source Password	

Compiere Standard: Licensed (pdf licensed), Expires 02/06/2010 (in 494 days), Seats: 1 (Actual: 0), Status: U  
Compiere Professional: Not Licensed

Check entries and press OK to submit.

Start Migration [X] Check License

28) To verify your license, click the "Check License" button.

**Tip:** Do not click Start Migration.

Notice that internet access is required to validate the license information.

29) Next, review that your license information has been validated.

Compiere Support 3.2.0

System Name:  System Status:

Registered Email:  Password:

Support Email:

Target URL:  Support Units:

Support Expires:  Supported Users:

Existing Support Contract Support Level:

Source URL:  Source UserID:  Source Password:

Compiere Warehouse Management: Compliant, Expires 02/06/2010 (in 494 days), Seats: 1 (Actual: 0)

Compiere Manufacturing: Compliant, Expires 02/06/2010 (in 494 days), Seats: 1 (Actual: 0)

Compiere End User Layer: Compliant, Expires 02/06/2010 (in 494 days), Seats: 1 (Actual: 0)

Compiere Warehouse Management Information updated.

Compiere Manufacturing Information updated.

Compiere End User Layer Information updated.

30) After Compiere Professional license has been verified, click the “X” to close the window.

**Note:** If you get the error “You do not have an appropriate license to use this feature” when starting the web UI, then login to the server and execute `utils/RUN_Support` to validate again your license and restart the application server.

31) Close any additional Setup and /or Support windows.

## Run Application Server

3. Start the Compiere Application Server

- 1) Execute `utils/RUN_Server2`.
- 2) There should be no errors. Check the logs in `$COMPIERE_HOME/jboss/server/compiere/log` to verify this.
- 3) Common problems include ports already in use:
  - 17:41:09,085 ERROR [NamingService] Could not start on port 1099  
java.net.BindException: Address already in use:  
JVM\_Bind at java.net.PlainSocketImpl.socketBind(Native Method)
  - There is another program using port 1099; Stop it and restart `Run_Server2` or setup Compiere to use another port in `RUN_setup`.

Likely port conflicts:

- 80 - You have some other web server running (or you need privileges under Linux/Unix)
- 8080 - The Oracle Database uses that
- 1099 - Often used by IDEs for debugging

## Start Compiere

### 4. Start the Compiere Client.

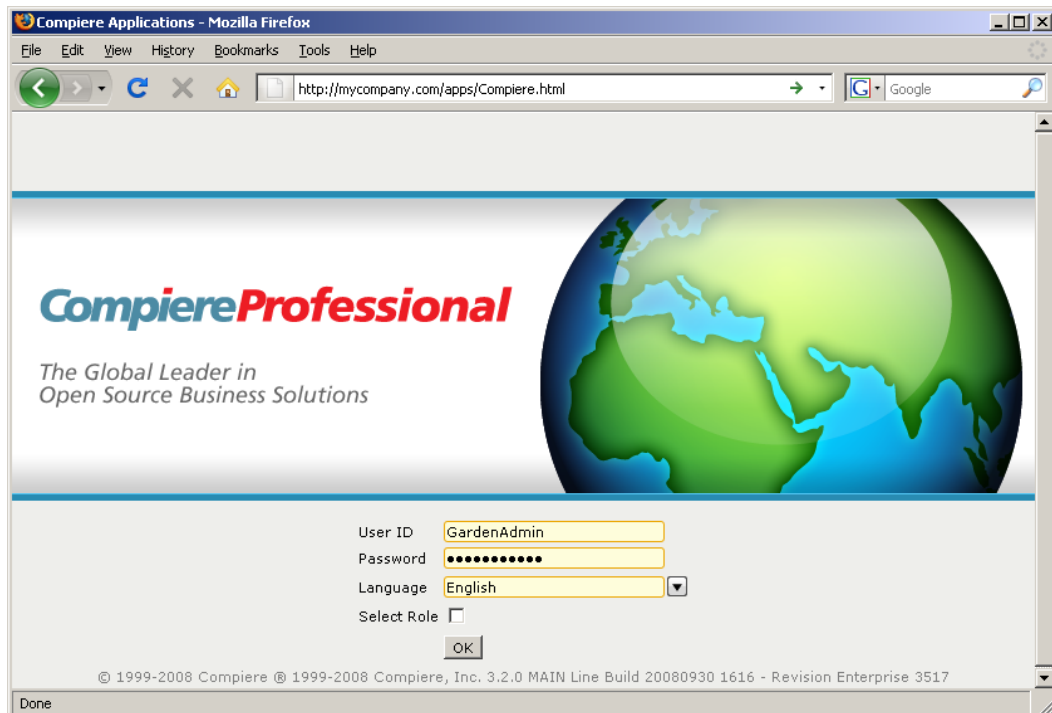
- 1) Start the Swing client by double clicking on the Compiere shortcut in your desktop or by executing **RUN\_Compiere2** from the \$COMPIERE\_HOME directory.

Default users and passwords for the sample Garden World application:

- GardenUser/GardenUser
- GardenAdmin/GardenAdmin
- System/System
- SuperUser/System



- 2) Alternatively, if you have access to the Professional Edition, you can launch the application from the browser by using the URL: <http://server:port/apps>, (e.g. <http://mycompany.com:80/apps>.)  
**Tip:** For optimal performance, the Firefox browser is recommended for using the Compiere Web User Interface.



**Information:** For additional information see the Compiere home page <http://www.compiere.com>.



---

## **Appendix C**

### **Compiere 3.2 – Application Extensions**

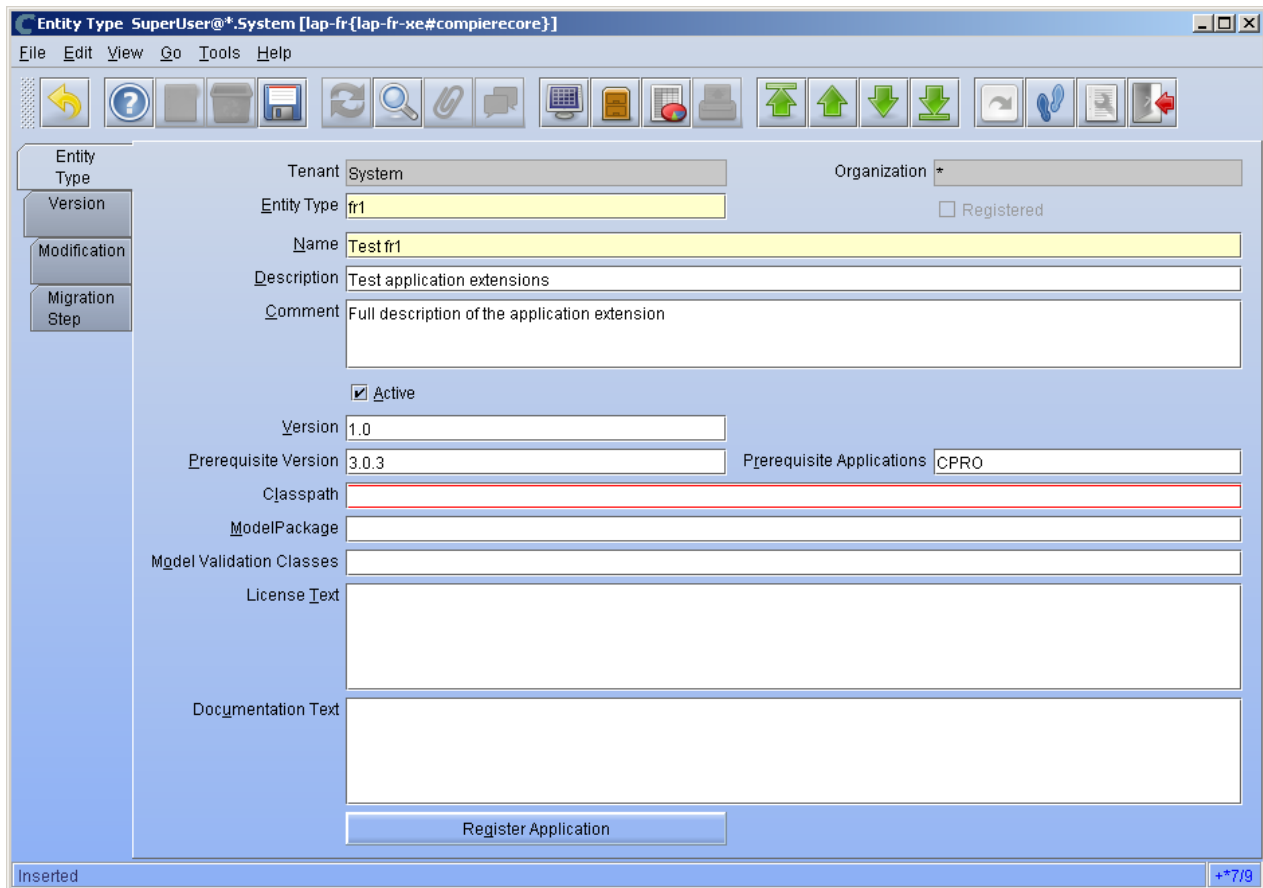
## Compiere 3.2 Application Extensions

This section is for Application Extensions in Compiere available as beta functionality in 3.2 for Partners. This framework will allow Partners to create application extensions that include both reference data and code, and can be distributed to their customers through Compiere. The rollout of the application marketplace is scheduled for the second half of 2008.

### Registration of Application Extensions – Application Provider (Partner)

Use the steps below to register for Application Extensions:

- 1) To register an Application Extension, log a Support Request with Compiere.
- 2) Login with the System Administrator role.
- 3) Open the Entity Type window (Application Dictionary => Entity Type) and create a new record.



The screenshot shows the 'Entity Type' window in Compiere. The window title is 'Entity Type SuperUser@\*.System [lap-fr-{lap-fr-#compierecore}]'. The menu bar includes File, Edit, View, Go, Tools, and Help. The toolbar contains various icons for navigation and actions. The main form area is divided into several sections:

- Entity Type:** Tenant: System, Organization: \*
- Entity Type:** Entity Type: fr1, Registered:
- Name:** Test fr1
- Description:** Test application extensions
- Comment:** Full description of the application extension
- Active:**
- Version:** 1.0
- Prerequisite Version:** 3.0.3
- Prerequisite Applications:** CPRO
- Classpath:** (empty)
- ModelPackage:** (empty)
- Model Validation Classes:** (empty)
- License Text:** (empty)
- Documentation Text:** (empty)

At the bottom of the form is a 'Register Application' button. The status bar at the bottom left shows 'Inserted' and the bottom right shows '+\*7/9'.

**Hint:** Be careful not to modify the entities C, D, CPRO or XUOM.

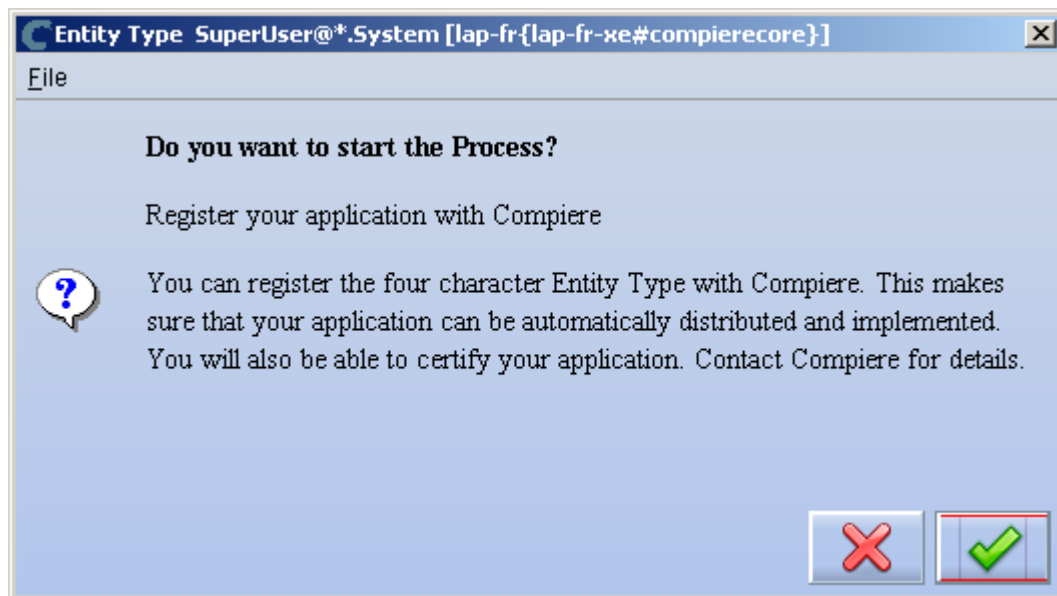
**Important:** Complete all the mandatory fields. For entity type, notice that names beginning with “C” and “X” are reserved for Compiere and you must use four characters.

Comments about optional fields:

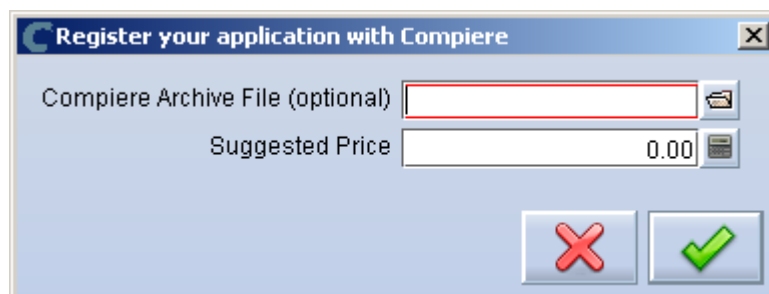
- Version: The version of your extension. Usually 1.0 for the first version.
  - Prerequisite version: The Compiere Core version that is required for this extension, e.g. 3.2. You need to use the exact text as defined for the entity type D.
  - Prerequisite applications: The entity type of the applications that need to be installed in order to install this extension. For example, set it to CPRO if the extension must be applied on top of the professional edition.
  - Classpath: List of additional jar files required for this extension.
  - Model package: Specific model package from the jar files listed in the classpath field.
- 4) You do not need to enter any information on the Version, Modification, or Migration Step tabs.
  - 5) Ensure that your System window contains your up to date information for your system and web store email/password information.
  - 6) Click "Register Application" to send your request to Compiere.

**Tip:** If an entity type with the same name has already been registered you'll get an error "Error: Already registered: XXXX". You will have to create a new record with the new entity type. Verify with Compiere that the new entity type that you plan to use is available.

- 7) Click 'Ok' to start process.



- 8) Leave the defaults in place and click 'Ok' to continue.



- 9) At this point the status will be pending approval from Compiere. A Compiere representative should contact you soon to confirm the registration or to ask any additional questions.

## Creation of Application .car file – Application Provider (Partner)

Follow the steps below to create the Application.car file:

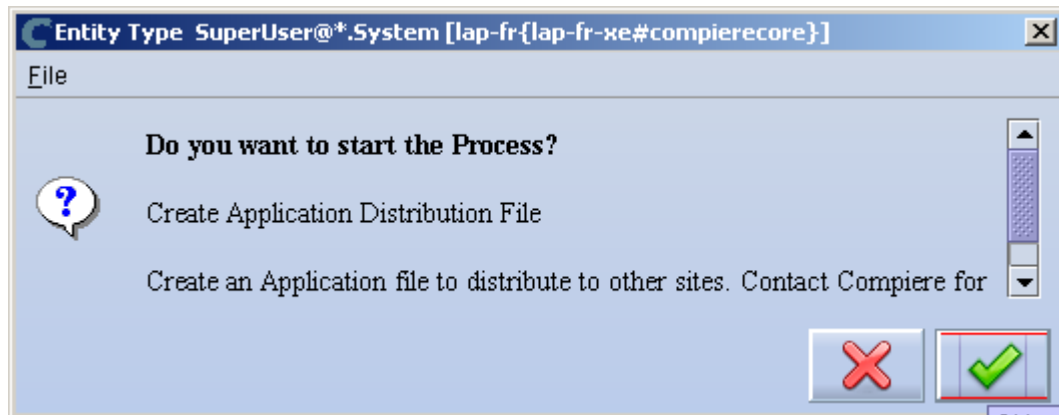
- 1) Make all the application dictionary changes using the entity type that you registered in the previous step.
- 2) Generate jar files for the custom code required by your extension.
- 3) After having your new Entity Type approved by Compiere; login to Compiere with the System Administrator role and query the entity type that you registered in the previous step and click “Create Application File.”

The screenshot shows the 'Entity Type' configuration window in Compiere. The window title is 'Entity Type SuperUser@\*.System [lap-fr-{lap-fr-xe#compierecore}]'. The interface includes a menu bar (File, Edit, View, Go, Tools, Help) and a toolbar with various icons. On the left, there is a sidebar with buttons for 'Entity Type', 'Version', 'Modification', and 'Migration Step'. The main area contains the following fields and controls:

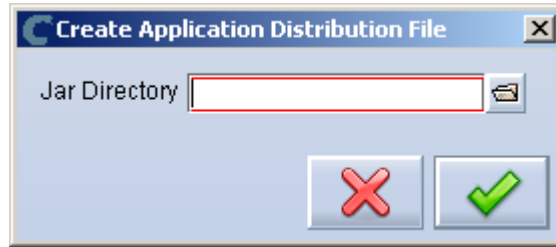
- Tenant: System
- Organization: \*
- Entity Type: LFR1 (with a checked 'Registered' box)
- Name: Test fr1
- Description: Test application extensions
- Comment: Full description of the application extension
- Active:
- Version: 1.0
- Prerequisite Version: 3.0.3
- Prerequisite Applications: CPRO
- Classpath: lfr1\_code.jar
- ModelPackage: (empty)
- Model Validation Classes: (empty)
- License Text: (empty)
- Documentation Text: (empty)

At the bottom of the form, there are two buttons: 'Register Application' and 'Create Application File'. The status bar at the bottom left indicates 'Record saved' and the bottom right shows '7/9'.

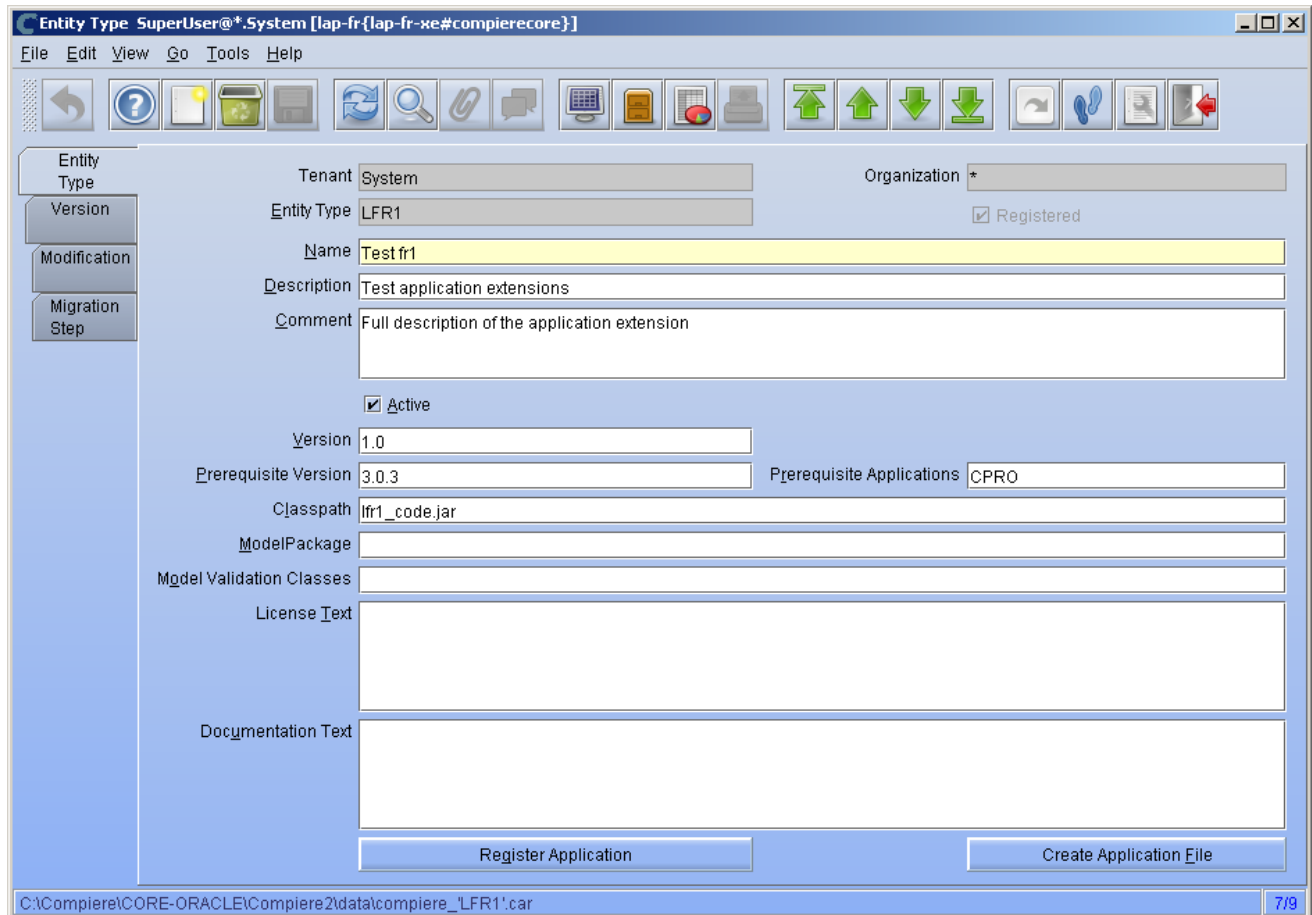
- 4) Click 'Ok' to start process.



- 5) Provide the directory for the jar file directory.



- 6) The car file will be generated in the COMPIERE\_HOME/data directory. The newly generated .car file will have a name of compiere\_XXXX.car.



**Important:** The naming convention for .car files has changed, (e.g. compiere\_'CPRO'.car prior to 3.2 is now compiere\_CPRO.car in 3.2). If a customer unzips the Compiere installation files into the same directory, it is possible to end up with both compiere\_'CPRO'.car as well as compiere\_CPRO.car. This in turn will cause Compiere Professional to show up twice in the installation window. To avoid this situation, customers will need to manually delete compiere\_'CPRO'.car and compiere\_'XUOM'.car from COMPIERE\_HOME/data directory. These are the only two .car files that Compiere has distributed prior to 3.2. If a customer has created any additional .car files prior to 3.2, it is necessary to follow the same procedure for those .car files as well.

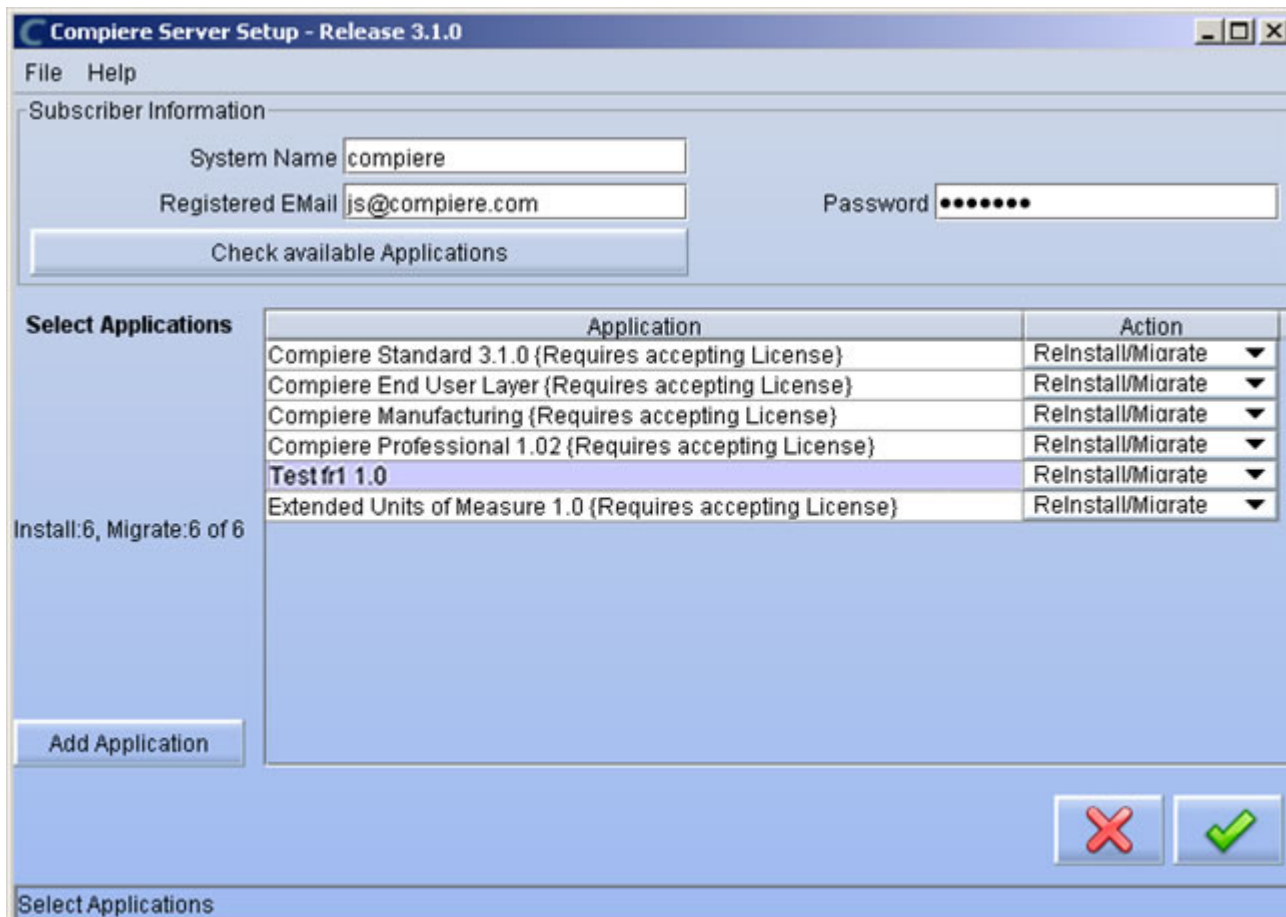
## Installation – Application Consumer (Customer)

Follow the steps below to install the Application:

- 1) After obtaining the car file for the application extension, copy it to the directory COMPIERE\_HOME/data.
- 2) Execute RUN\_Setup (see Appendix A for details on the setup information.)

**Important:** Be sure to have internet connection available to be able to get the license terms for the application extensions that you plan to install.

- 3) When you get to the window to select the applications, besides the application extension that you need to install, also select the option Reinstall/Migrate for Compiere Core 3.2.



- 4) Then continue with the MIGRATION steps as usual. (See Appendix A for more details.)

---

## **Appendix D**

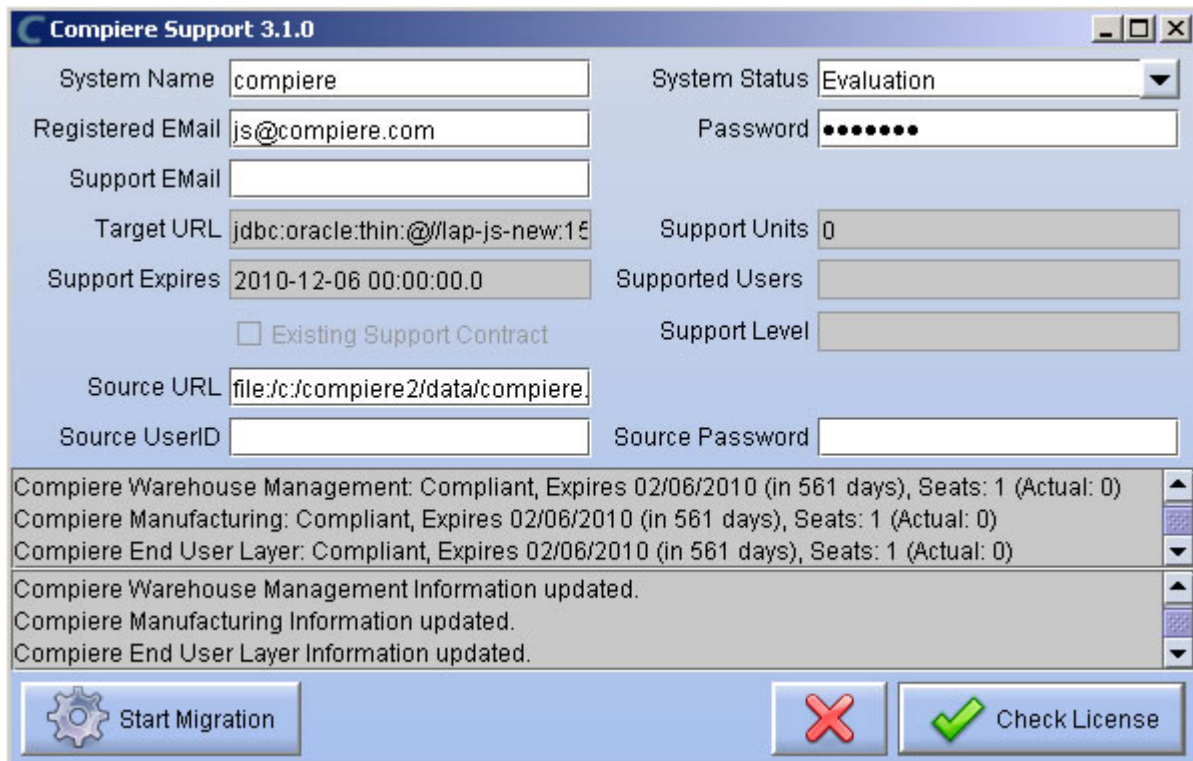
### **Compiere 3.2 – Delete Client and Delete Client Transactions**

## Delete Client and Delete Client Transactions

This allows you to remove unwanted tenants and transaction data that you might have added while testing the application. This is an existing functionality from previous releases, but the instructions are now different. To access this functionality you need follow the steps listed below.

Complete the following steps to Delete a Client and Client Transactions:

- 1) Execute **utils/RUN\_Support**.
- 2) Provide your system name, email address and password exactly as it was registered in the Compiere Web Store, and select Check License.
- 3) Update the source URL section. Then verify that the database is correct, and provide the Compiere user name and password.
- 4) Select Start Migration.

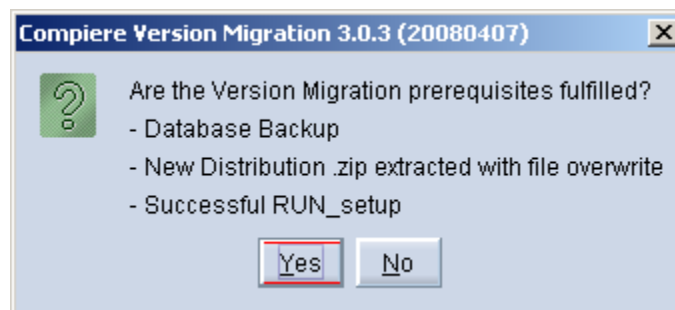


Compiere Support 3.1.0

System Name: compiere  
Registered EMail: js@compiere.com  
Support EMail:   
Target URL: jdbc:oracle:thin:@//lap-js-new:15  
Support Expires: 2010-12-06 00:00:00.0  
Existing Support Contract:   
Source URL: file:c:/compiere2/data/compiere.  
Source UserID:   
System Status: Evaluation  
Password:   
Support Units: 0  
Supported Users:   
Support Level:   
Compiere Warehouse Management: Compliant, Expires 02/06/2010 (in 561 days), Seats: 1 (Actual: 0)  
Compiere Manufacturing: Compliant, Expires 02/06/2010 (in 561 days), Seats: 1 (Actual: 0)  
Compiere End User Layer: Compliant, Expires 02/06/2010 (in 561 days), Seats: 1 (Actual: 0)  
Compiere Warehouse Management Information updated.  
Compiere Manufacturing Information updated.  
Compiere End User Layer Information updated.

Start Migration [Red X] Check License

- 5) Click 'Yes' to continue.



Compiere Version Migration 3.0.3 (20080407)

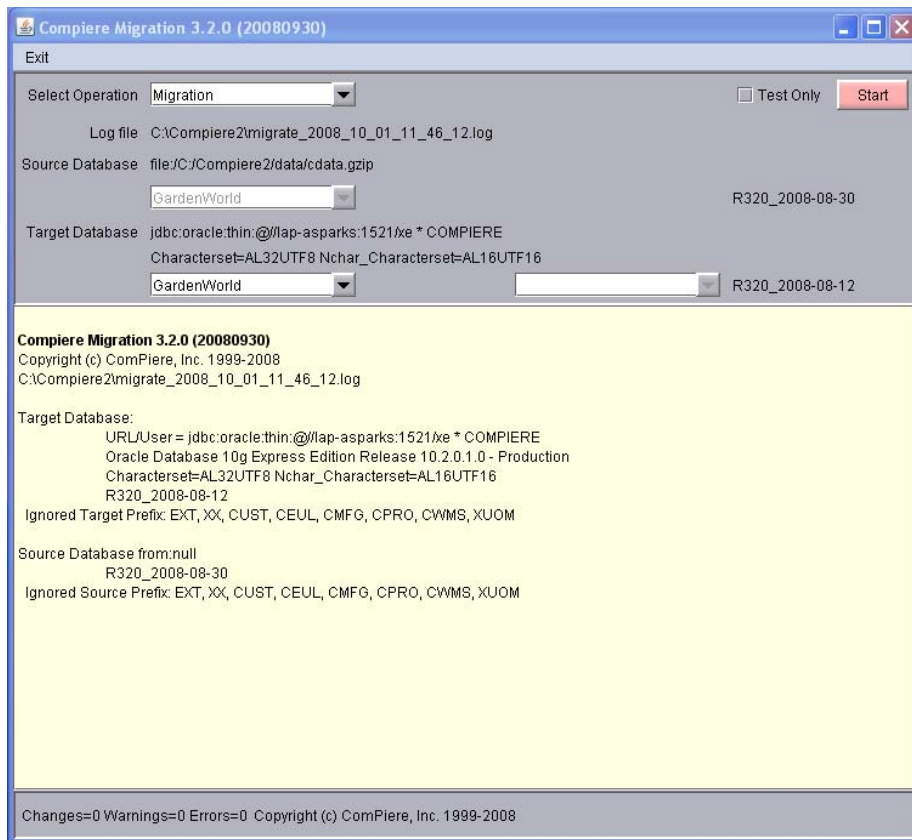
Are the Version Migration prerequisites fulfilled?

- Database Backup
- New Distribution .zip extracted with file overwrite
- Successful RUN\_setup

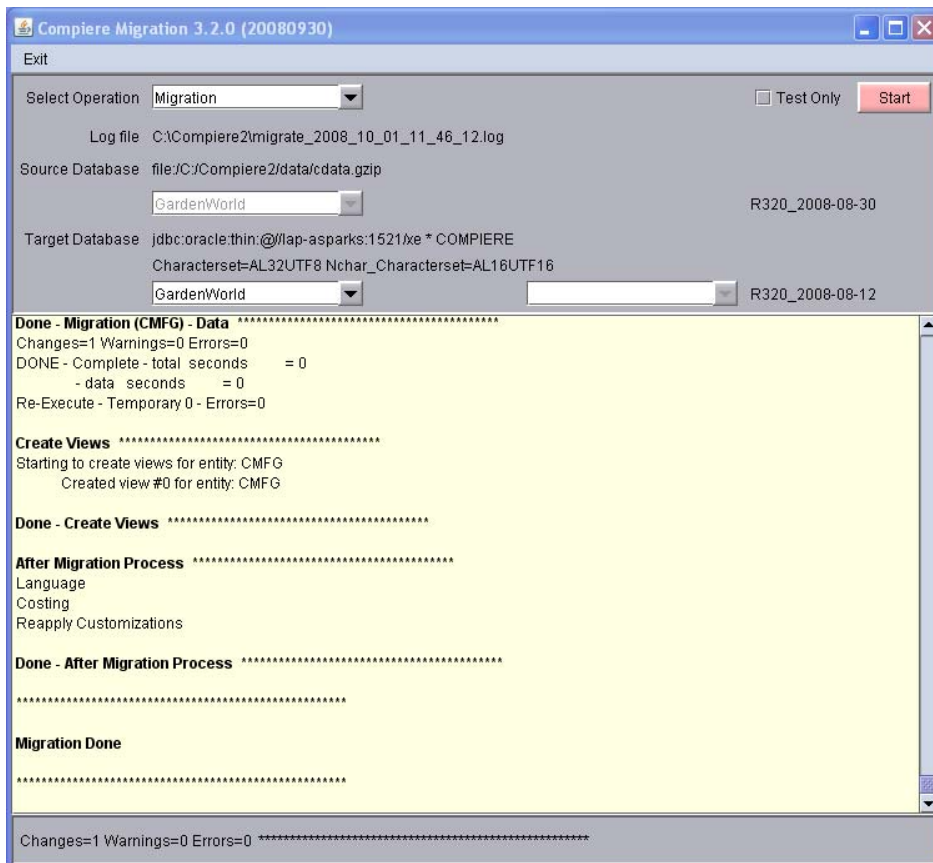
Yes No

- 6) Select the operation Delete Client (all) or Delete Client Transactions.
- 7) Uncheck test only and select Start.





- 8) Verify that the migration finish with no errors and the message “After Migration - DONE” is displayed. In case you get any errors, please be sure to review the list of known issues listed in this document before logging a service request.



---

## **Appendix E**

### **Compiere 3.2.1– Service Pack Information**

## Fixed Issues for Compiere 3.2.1

The following is a list of the issues that have been fixed in Compiere 3.2.1

Compiere Case Number	Description
10016365	Create Material Receipt from PO will not set Date Ordered
10016385	SO line availability not checked on new warehouse
10016391	Able to Void Purchase Order After Matching
10016410	Printing accounting tab of a tax declaration
10016522	Migrate Copy Client errors
10016543	GL Import Accounting currency rounding
10017310	Specsavers issue Ctrl-Alt-Plus Expand Ctrl-Alt-Minus Collapse, these shortcuts don't work.
10018318	Virtual Column Not Available on Report
10018401	Order reference and description is being overwritten when a BP is selected. As these fields are sequentially before BP it is likely that a user will enter those before entered a BP, so it should only take the values from the BP default if the fields are blank. Regression
10018527	Web UI - no place to change/ switch auto printing off. It seems to always print to the printer regardless.
10018778	AD_Role.UserLevel: default not used - Has two spaces before the O (correct) The AD_Role.Userlevel column has a dictionary specified default of " O" (Organization). The default value is not being used for new records. (Maybe it has something to do with the fact that the field is 3 characters long, and the value in the list reference is " O" (2 leading spaces) as opposed to the AD_Column default "O".)
10018792	Tax Correction: Error when the discount/write-off is applied on an invoice with prices including taxes.
10018793	Tax Correction : Error when an invoice based on a different currency than default currency
10019058	From Price List / PL version / Product Price, start the report. Then click the Filter button to clear all filter. You will get all prices. Customize the Print Format so that 3 columns are shown: PL Version, Product, and Price,. Group by on the 2 first columns Create a Sum on the third column. The result is a bug. We have an X / A Sub total but we do not have a X / B SubTotal and the Price 12 is totally affected to the Y / B Subtotal making it 26. But the Y total is 14
10019122	Limit some location fields, for example I want address4 field limited to 24 characters. I tried to modify the C_Location table address1 column to 24 length string without effect. After looking source code, I found that this window is hard-coded (VLocationDialog class). As a temporary solution, I changed the address4 declaration with a VString instead of CTextfield and was able to limit the size, but it's a dirty hack.
10019194	When creating a business partner group, a Vendor Return Policy can be set. When creating a Business Partner of the type vendor, the default setting for Vendor Return Policy on the BP Group is not copied to the Business Partner.
10019210	In the REQUEST screen, under the REFERENCE group, the field ORDER is wrong - it zooms and creates a Purchase Order when it should be a Sales Order.
10019235	Re-Activated Sales Order does not print order but the reversed invoice.
10019309	Print Format on Web UI are not sorted by "Default" field. Cannot set up a Default Print Format amongst different one so that COMpiere show me this one when I start the Report button
10019312	When duplicating a bank A record to a new bank B, in Swing and Web UI, the location ID is also set to the same address. Afterwards, when changing the address of bank A, bank B address is also changed, and vice-versa. This issue is due to the common Location_ID, and we have no way to fork. (Other than resetting externaly in Oracle). Either, you also duplicate the address, or you set the duplicated address bank to null.
10019331	We are rewriting all official documents with JasperReport. When an invoice is printed through a normal process, it works, but when printed through the print button of the invoice itself, it fails. (This on WebUI Only; on Swing, Jasper never works)
10019339	Replicated: RV_OpenItem only exludes docstatus draft "DR" and doesn't take into account the workflow status "in progress" "IP".

10019452	In desktop version, we can print preview any document we want to print and then decide either to print it or not. While in browser version, when we want to print the document, Compiere will automatically do two things: 1. Create pdf for the document (which we can use it as preview printed document also) 2. Print to specified printer. The second one is cumbersome if we want to generate pdf only file (let say if we want to email it) because it also print the document. Is there anyway the web version let the user decide whether they want to print it or not?
10019512	When using the Generate Invoices process, the system checks the field "Document Type for Invoice" on the Sales Order Document Type to know what Document Type to generate the invoices. However, there is a bug in that when 2 or more sales orders are being used in the Generate Invoice process, and each sales order is for a different document type, and the document type for invoicing is different, the system is consolidating the invoices into 1 instead of creating 1 per invoice document type.
10019554	When clicking on the day, week, month or year button of the Sales Order lookup, it seems that Compiere wants to return all the records for the Sales Order. The same happens when you click on the week, year, etc buttons. See screenshot.
10019569	I've defined different printing formats for "Standard order" for different customers. It's ok with the swing UI, because I can select the printing format before I print. But with the web ui, I have to go to the "Document type" window to change the print format which wastes a lot of time. Is it possible to select the printing format before printing in the web ui just to generate reports.
10019571	Functions boomqtyonhand , boomqtyoredered y boomqtyreserved are using integer . The oracle equivalent uses NUMBER. That produces errors in edb. Process PricelistCreate uses currencyrate and it is reported as not found, but it is in the edb database.
10019581	If you open a window that cannot be updated and then search and display a record that can be updated all fields are protected. If you refresh the window, the fields are updatable. If you open a window that has no current records (e.g. Document) and then search all, documents that are completed show as updateable.
10019614	Logging in using the Finish language, the Web UI isn't displaying the currency and dates correctly where the Swing UI does. Seems to be an issue with all languages and currency and date displays Swing UI: Date dd.mm.yyyy, Currency 10 000 000,00 - Web UI: Date mm/dd/yyyy, Currency: 10,000,000.00. The same applies for English (UK) date formats. The Web UI seems to apply American formats for date and currency.
10019627	Account info is available in web UI to users who do not have access to accounting info.
10019638	More than one accounting schema. In financial reports (trial balance, statement of account, accounting fact,...) , in the dialog box just before execution, if you select a specific accounting schema, Account combo list is not filtered accordingly to selected accounting schema. It is therefore impossible to identify to which accounting schema belongs a specific account in the list. (and we can had that combo doesn't display all accounts when combo capacity is over)
10019674	Very expensive SQL in production, taking up to 38 minutes to execute, and with a ridiculous CBO cost of 1,622K GROUP BY in Exists Clause. UPDATE Fact_Acct_Balance ab - SET (AmtAcctDr, AmtAcctCr, Qty) = (SELECT COALESCE(SUM(AmtAcctDr),0), COALESCE(SUM(AmtAcctCr),0), COALESCE(SUM(Qty),0) FROM Fact_Acct a SQL seems to be from FinBalance.updateBalance line 162 After removing the GROUP BY in the WHERE clause the cost comes down to 551.
10019680	Say a column had a value format of 00:00 . This is useful for storing a time value in a string field. The value format would accept the input correctly, but when it was saved and the record requeried, the value was not displaying at all - it showed "00:00" even though in the db it was "01:00".
10019721	EEmail to support contains database password in Swing UI. It looks like the "EEmail to support" message contains the password of the database schema owner. This message is also visible to the user.
10019745	Processing a credit card payment from an SO. If you are using the payment function from the SO, the Online button will create a payment each time you click it and clicking the Ok button will also create a payment (does the same thing as the online). So while the payment is processed successfully or you receive a failure message, there are at least two payments created each time you try and use this payment function from the SO. I would think that after processing the payment (clicking the Online button) the button would disappear or be read only. And the Ok button would not create a payment but make the payment pop up disappear.
10019877	Problems with some Keyboard Shortcuts. The new Key board shortcuts are as follows: Alt-Minus Collapse Alt-Equals or Alt-Plus Expand Alt-PageUp Previous Page/Record Alt-PageDown Next Page/Record For more information on Keyboard Shortcuts, please refer to the User documentation.

## Product Enhancements for Compiere 3.2.1

The following is a list of the enhancement Requests that have been completed in Compiere 3.2.1

Product Enhancement	Description
100195877	Support 100,000 line invoices as long as they can be run in background without impacting other users, even if this takes many hours (even days) to complete. It is reasonable to expect large invoices to take longer (hours/days), however, the requirement here is for an user to be able to (a) Schedule the Completion process of invoices to run at a pre-determined time and/or low priority queue and (b) Not to affect other processes.
10018636	Add a Check Price List checkbox to the Verify BOMs process (called from the main menu). When the process is executed for a BOM product, verify that all of its BOM components are present on the same price list versions that the parent BOM product is on. e.g., if Patio Furniture Set is on the Standard 2003 and Export 2003 price list versions, all of it's components must also be on Standard 2003 and Export 2003 price list versions otherwise the BOM validation will fail. Give appropriate messages in the log and also the UI if possible.
101194521	Can set the Date in User Preferences.
101194522	Web UI now offer the Print Preview always option under User Preferences.
101194523	Mass printing of Invoices and Dunning.

## Known Issues in the Install Process of Compiere 3.2.1

Warnings and Error Messages you may see during the Install, Migrate, or at runtime when using the application.

Install Issues – Warning/Error Messages	Database	Solution
<p>If you are using Oracle XE and see the following error message in the log files:            -----&gt; DB_Oracle.getCachedConnection: java.sql.SQLException: Listener refused the connection with the following error:            ORA-12516, TNS:listener could not find available handler with matching protocol stack            The Connection descriptor used by the client was:            (DESCRIPTION=(ADDRESS=(PROTOCOL=tcp)(PORT=1521))(HOST=COMPIERE-1E8474))(CONNECT_DATA=(SERVICE_NAME=x))            Open a command prompt window and type the following:            sqlplus system/compiere            ALTER SYSTEM SET processes=200 SCOPE=spfile;            And then re-start the database (On Windows: Start =&gt; Programs =&gt; Oracle =&gt; Stop DB &amp; then Start DB)</p>	Oracle XE	Follow the instructions and then re-start the database.

## Known Issues in Compiere 3.2.1

Issues you may encounter using Compiere 3.2.1

Issue	Database	Solution
Customers upgrading from 3.1 or older must delete or rename the COMPIERE_HOME/jboss folder before unzipping the binary distribution of Compiere to uptake version 4.2.3 of JBoss. For customers on 3.2.0 is also recommended to do it because for Compiere 3.2.1 for performance reasons we have removed some JBoss services that are not used by Compiere.	All	Open
<p>If you are having performance issues with the apps server when using the web UI, it is recommended that you tune your JVM parameters to the specific needs of your instance. As a starting point, you can set the following parameters:            The best way is to add it to the CompiereEnv.properties file and execute            RUN_Setup=&gt;File Install COMPIERE_JAVA_OPTIONS=-Xms512M -Xmx1048M -XX:MaxPermSize=128m -XX:NewRatio=3 -XX:NewSize=256m -X:+HeapDumpOnOutOfMemoryError. If you don't want to execute RUN_Setup, change the appropriate line in myEnvironment.bat/sh and restart the apps server for immediate effect..</p>	All	Open
Known issue for customers on 3.1 or 3.2 using BVL. If you have created BVL users with names that are not valid database users (i.e. names with spaces, special characters, etc.) and try to refresh your instance, the process will fail. As a workaround, update the the column Name in AD_EUL_Users to fix the names to comply with the restrictions on database user names.	All	Open

For a current list of open issues please query the list of public requests from our request system

<http://www.compiere.com/support/support-requests.php>.